

## Product datasheet for **AP02542PU-N**

### SHC (SHC1) pTyr427 Rabbit Polyclonal Antibody

#### Product data:

Product Type:	Primary Antibodies
Applications:	IF, IHC, WB
Recommended Dilution:	Western Blot: 1/500-1/1000. Immunofluorescence: 1/100-1/200. Immunohistochemistry on Paraffin-Embedded Sections: 1/50-1/100.
Reactivity:	Human, Mouse, Rat
Host:	Rabbit
Clonality:	Polyclonal
Immunogen:	The antiserum was produced against synthesized phosphopeptide derived from human Shc1 around the phosphorylation site of tyrosine 427 (P-S-YP-V-N).
Specificity:	This antibody detects endogenous levels of Shc1 only when phosphorylated at Tyrosine 427.
Formulation:	PBS (without Mg <sup>2+</sup> and Ca <sup>2+</sup> ), pH 7.4, 150 mM NaCl, 0.02% Sodium Azide and 50% Glycerol. State: Aff - Purified State: Liquid purified Ig fraction.
Concentration:	lot specific
Purification:	Affinity Chromatography using epitope-specific phosphopeptide. The antibody against non-phosphopeptide was removed by chromatography using non-phosphopeptide corresponding to the phosphorylation site.
Conjugation:	Unconjugated
Storage:	Store the antibody (in aliquots) at -20°C. Avoid repeated freezing and thawing.
Stability:	Shelf life: One year from despatch.
Gene Name:	SHC adaptor protein 1
Database Link:	<a href="#">Entrez Gene 6464 Human P29353</a>



[View online »](#)

**Background:**

The SHC gene encodes for a signaling and transforming protein containing Src homology 2 and 3 (SH2 and SH3) domains. The SHC gene encodes 2 widely expressed overlapping proteins of 46 and 52 kD, both containing a C-terminal SH2 domain. Adjacent to the SH2 region is a glycine and proline rich region. These 2 proteins differ in their N terminals. SHC proteins are involved in mitogenic signal transduction and act by coupling growth factor receptors to the RAS signaling pathway.

The protein encoded by the SHC1 gene is thought to act as an adaptor in many signal transduction pathways.

**Synonyms:**

SHC-transforming protein 1, SHC-transforming protein A, SHC-transforming protein 3, SHCA

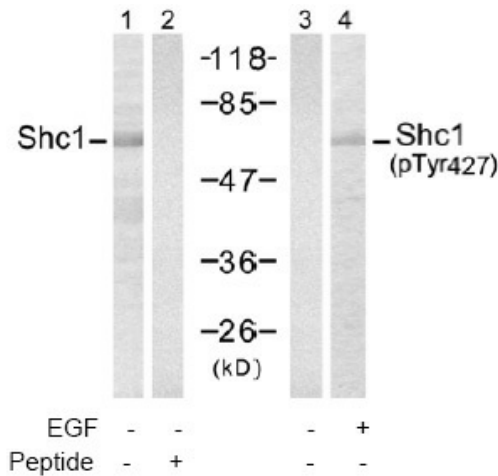
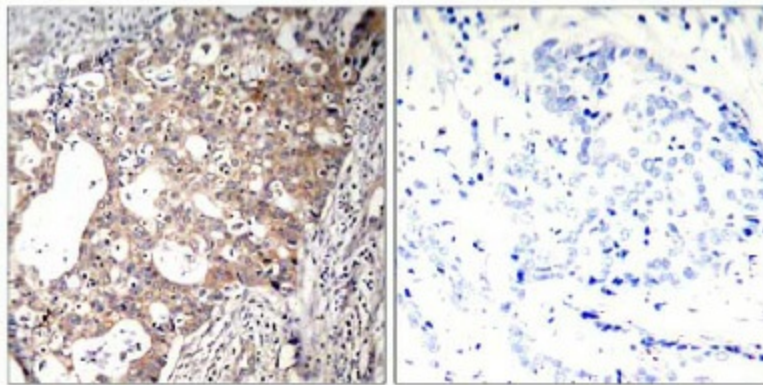
**Product images:**


Figure 2. Western blot analysis of extracts from 293 cells, using Shc1 antibody (Lane 1 and 2) and Shc1 pTyr427 antibody (Lane 3 and 4).



P-Peptide                      -                      +

Figure 1. Immunohistochemical analysis of paraffin-embedded human breast carcinoma tissue, using Shc1 pTyr427 antibody

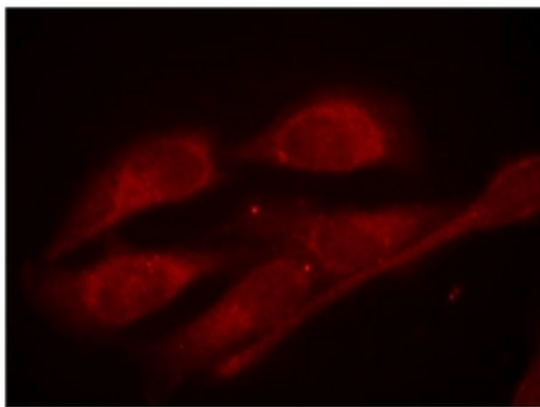


Figure 2. Immunofluorescence staining of methanol-fixed HeLa cells using Shc1 pTyr427 antibody (Red).