

Product datasheet for **AP02537PU-S**

Cytokeratin 18 (KRT18) pSer33 Rabbit Polyclonal Antibody

Product data:

Product Type:	Primary Antibodies
Applications:	IHC
Recommended Dilution:	Immunohistochemistry: 1:50~1:100.
Reactivity:	Human
Host:	Rabbit
Clonality:	Polyclonal
Immunogen:	The antiserum was produced against synthesized phosphopeptide derived from human Keratin 18 around the phosphorylation site of serine 33 (A-A-SP-V-Y).
Specificity:	Keratin 18 antibody detects endogenous levels of Keratin 18 only when phosphorylated at serine 33.
Formulation:	PBS(without Mg ²⁺ and Ca ²⁺), pH 7.4 containing 150mM NaCl, 0.02% sodium azide and 50% glycerol State: Aff - Purified State: Liquid purified IgG
Concentration:	lot specific
Purification:	The antibody was affinity-purified from rabbit antiserum by affinity-chromatography using epitope-specific phosphopeptide. The antibody against non-phosphopeptide was removed by chromatography using non-phosphopeptide corresponding to the phosphorylation site.
Conjugation:	Unconjugated
Storage:	Store the antibody at -20°C. Avoid repeated freezing and thawing.
Stability:	Shelf life: one year from despatch.
Gene Name:	keratin 18
Database Link:	Entrez Gene 3875 Human P05783



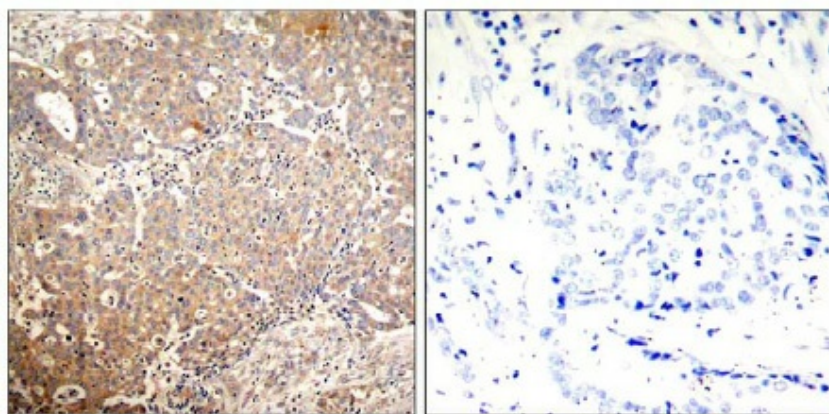
[View online »](#)

Background:

Cytokeratin 18 is an acidic keratin which is found primarily in non squamous epithelia and is present in a majority of adenocarcinomas and ductal carcinomas but not in squamous cell carcinomas. Cytokeratin 18 exists in combination with Cytokeratin 8, a basic keratin. Hepatocellular carcinomas have been reportedly defined by the use of antibodies that recognize only Cytokeratins 8 and 18.

Synonyms:

Cytokeratin-18, CK18, Keratin-18, Keratin 18, KRT18, CYK18, K18

Product images:

P-Peptide

-

+

Immunohistochemical analysis of paraffin-embedded human breast carcinoma tissue using Keratin 18 antibody.