

Product datasheet for **AP02535PU-N**

GSK3 beta (GSK3B) pTyr216 Rabbit Polyclonal Antibody

Product data:

Product Type:	Primary Antibodies
Applications:	IF, IHC, WB
Recommended Dilution:	Western Blot: 1/500~1/1000. Incubate membrane with diluted antibody in 5% nonfat milk, 1xTBS, 0.1% Tween-20 at 4°C with gentle shaking, overnight. Immunofluorescence: 1/100-1/200. Immunohistochemistry on Paraffin-Embedded Sections: 1/50-1/100.
Reactivity:	Human, Mouse, Rat
Host:	Rabbit
Clonality:	Polyclonal
Immunogen:	Peptide sequence around phosphorylation site of tyrosine 279/216 (V-S-Y(p)-I-C) derived from Human GSK3α/β.
Specificity:	The antibody detects endogenous level of GSK3α/β only when phosphorylated at tyrosine 279/216.
Formulation:	PBS (without Mg ²⁺ and Ca ²⁺), pH 7.4 containing 150mM NaCl, 0.02% Sodium Azide and 50% Glycerol. State: Aff - Purified State: Liquid purified IgG fraction.
Concentration:	lot specific
Purification:	Affinity Chromatography using epitope-specific phosphopeptide. The antibody against non-phosphopeptide was removed by chromatography using non-phosphopeptide corresponding to the phosphorylation site.
Conjugation:	Unconjugated
Storage:	Store undiluted at 2-8°C for one month or (in aliquots) at -20°C for longer. Avoid repeated freezing and thawing.
Stability:	Shelf life: one year from despatch.
Gene Name:	glycogen synthase kinase 3 beta
Database Link:	Entrez Gene 2932 Human P49841



[View online »](#)

Background:

Glycogen Synthase kinase 3 (GSK3) is a proline directed serine threonine kinase that was initially identified as a phosphorylating and inactivating glycogen synthase. GSK3 has been implicated in fundamental cell processes such as cell fate determination, metabolism, transcriptional control and oncogenesis. Two isoforms, alpha (GSK3A; OMIM 606784) and beta (GSK3B) show a high degree of amino acid homology within their catalytic domains. GSK3B is involved in energy metabolism, neuronal cell development and body pattern formation.

Synonyms:

GSK-3 beta, Glycogen synthase kinase-3 beta, GSK3B

Note:

Molecular Weight: 46 kDa, 51 kDa

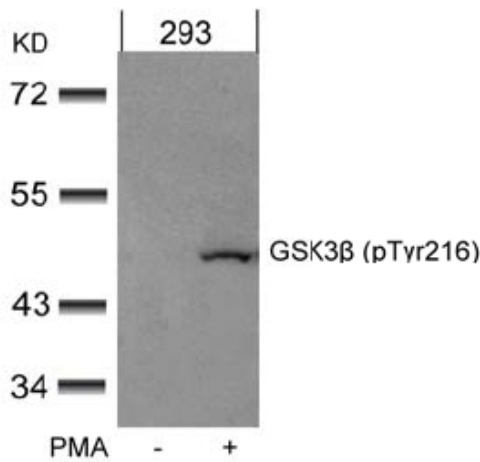
Product images:


Figure 3. Western blot analysis of extract from 293 cells untreated or treated with PMA using GSK3B pTyr216 antibody.

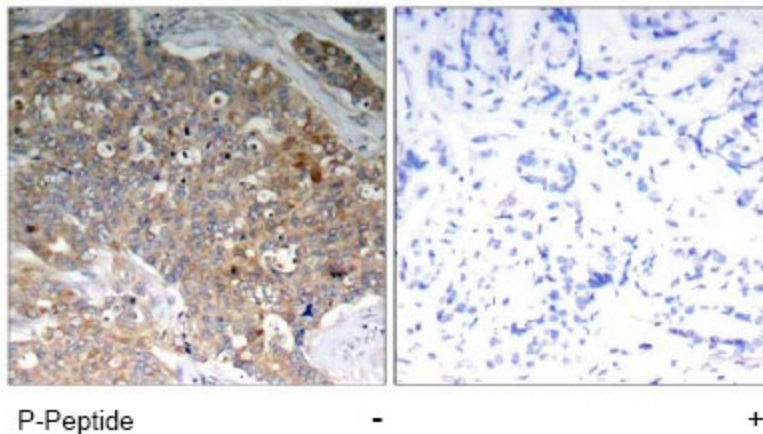


Figure 1. Immunohistochemical analysis of Paraffin-embedded human breast carcinoma tissue, using GSK3B pTyr216 antibody (left) or the same antibody preincubated with blocking peptide (right).

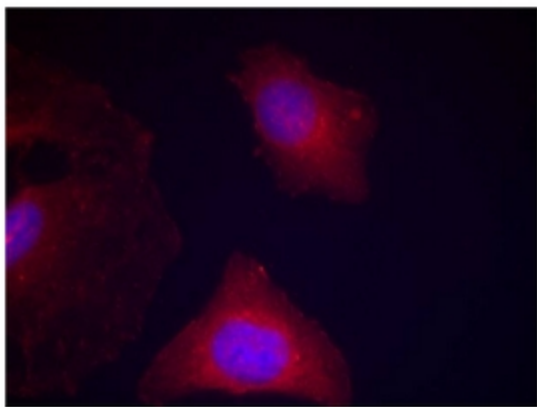


Figure 2. Immunofluorescence staining of methanol-fixed HeLa cells using GSK3B pTyr216 antibody (Red).