

Product datasheet for **AP02534PU-S**

PKC theta (PRKCQ) pSer676 Rabbit Polyclonal Antibody

Product data:

Product Type:	Primary Antibodies
Applications:	IF, IHC, WB
Recommended Dilution:	Western Blot: 1/500-1/1000. Immunofluorescence: 1/100-1/200. Immunohistochemistry on Paraffin-Embedded Sections: 1/50-1/100.
Reactivity:	Human, Mouse, Rat
Host:	Rabbit
Clonality:	Polyclonal
Immunogen:	The antiserum was produced against synthesized phosphopeptide derived from human PKC θ around the phosphorylation site of serine 676 (R-L-SP-F-A).
Specificity:	This antibody detects endogenous levels of PKC-theta only when phosphorylated at Serine 676.
Formulation:	PBS (without Mg ²⁺ and Ca ²⁺), pH 7.4, 150 mM NaCl, 0.02% Sodium Azide and 50% Glycerol. State: Aff - Purified State: Liquid purified Ig fraction.
Concentration:	lot specific
Purification:	Affinity Chromatography using epitope-specific phosphopeptide. The antibody against non-phosphopeptide was removed by chromatography using non-phosphopeptide corresponding to the phosphorylation site.
Conjugation:	Unconjugated
Storage:	Store the antibody (in aliquots) at -20°C. Avoid repeated freezing and thawing.
Stability:	Shelf life: One year from despatch.
Gene Name:	protein kinase C theta
Database Link:	Entrez Gene 5588 Human Q04759



[View online »](#)

Background:

Protein kinase C (PKC) is a family of serine/threonine kinases that plays crucial roles in signal transduction. Members of the PKC family are divided into three groups based on their molecular structures and activating mechanisms: 1) Conventional PKC (alpha, beta, and gamma) requiring calcium, phosphatidylserine (PS), and diacylglycerol (DG) for activation; 2) novel PKC (sigma, epsilon, eta, and theta) activated independent of calcium; and 3) Atypical PKC (zeta and lamda), which are independent of both calcium and DG. High-level expression of PKC-theta was found in skeletal muscle, lung, T cells, and brain, and minimal expression in cardiac muscle, placenta, and liver. PKC theta is a autophosphorylated protein kinase.

Synonyms:

PKC theta, PKC-theta, nPKC-theta, Protein kinase C theta type

Product images:

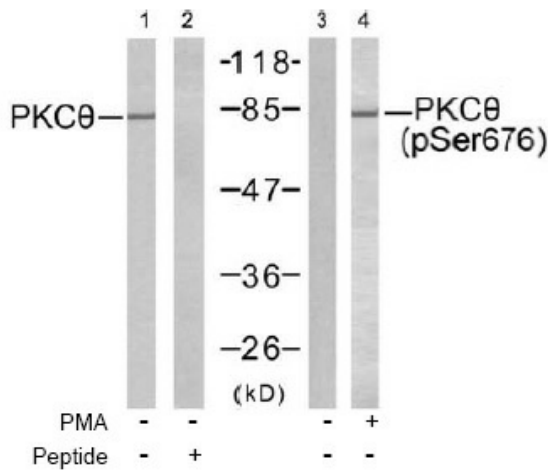


Figure 4. Western blot analysis of extracts from PC12 cells untreated or treated with PMA using PKC-Theta antibody (Phospho-Ser676) -N/

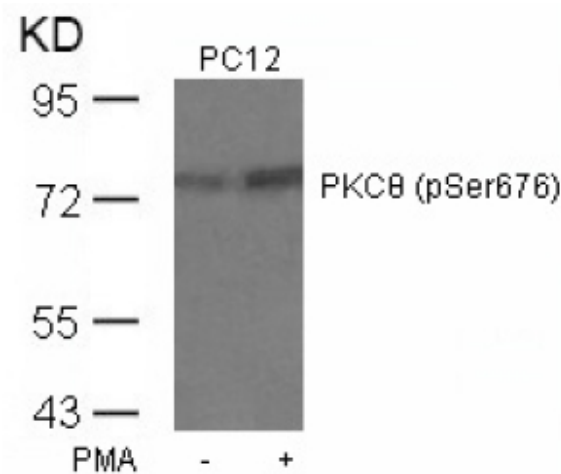
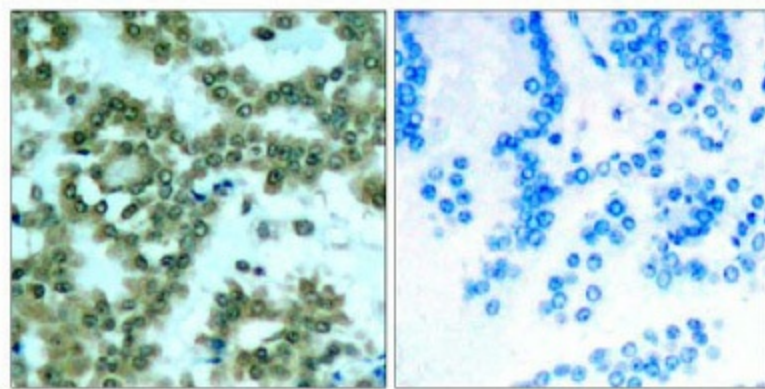


Figure 2. Western blot analysis of extract from Jurkat cells untreated or treated with PMA (1ng/ml, 5min), using PKC-theta antibody (Lane 1 and 2) and PKC-theta pSer676 antibody (Lane 3 and 4).



P-Peptide

-

+

Figure 1. Immunohistochemical analysis of paraffin-embedded human lung carcinoma tissue, using PKC-theta antibody

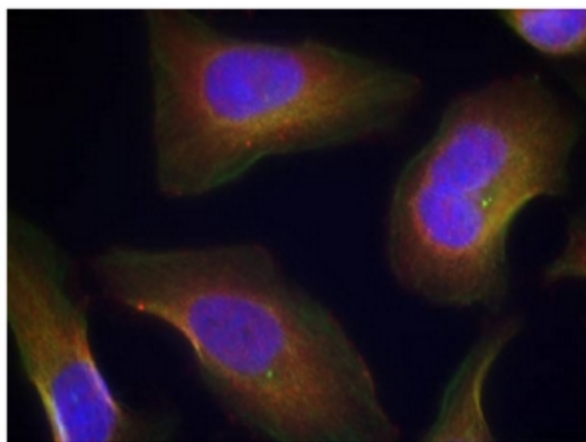


Figure 3. Immunofluorescence staining of methanol-fixed HeLa cells using PKC-theta pSer676 antibody (Red)