

Product datasheet for **AP02533PU-S**

PKC delta (PRKCD) pSer645 Rabbit Polyclonal Antibody

Product data:

Product Type:	Primary Antibodies
Applications:	IHC, WB
Recommended Dilution:	Western blot: 1/500~1/1000. Immunohistochemistry on Paraffin-Embedded Sections: 1/50~1/100.
Reactivity:	Human, Mouse
Host:	Rabbit
Clonality:	Polyclonal
Immunogen:	The antiserum was produced against synthesized phosphopeptide derived from Human PKC-delta around the phosphorylation site of Serine 645 (R-L-S _p -Y-S).
Specificity:	PKC δ antibody detects endogenous levels of PKC-delta only when phosphorylated at Serine 645.
Formulation:	PBS (without Mg ²⁺ and Ca ²⁺), pH 7.4, 150 mM NaCl, 0.02% Sodium Azide and 50% Glycerol. State: Aff - Purified State: Liquid purified Ig fraction.
Concentration:	lot specific
Purification:	Affinity Chromatography using epitope-specific phosphopeptide. The antibody against non-phosphopeptide was removed by chromatography using non-phosphopeptide corresponding to the phosphorylation site.
Conjugation:	Unconjugated
Storage:	Store undiluted at 2-8°C for one month or (in aliquots) at -20°C for longer. Avoid repeated freezing and thawing.
Stability:	Shelf life: one year from despatch.
Gene Name:	protein kinase C delta
Database Link:	Entrez Gene 5580 Human Q05655



[View online »](#)

Background:

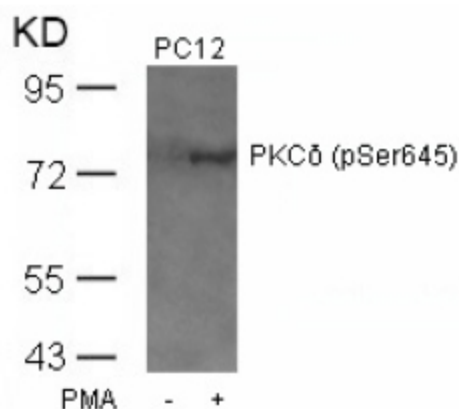
Protein Kinase C delta (PKC delta) is a 78 kDa member of the novel group (nPKCs: sensitive to diacylglycerol, phosphatidylserine, and phorbol esters) of the PKC family of serine/threonine kinases that are involved in a wide range of physiological processes including mitogenesis, cell survival and transcriptional regulation. PKC delta is an ubiquitously expressed PKC isozyme that has been implicated in the regulation of multiple cellular processes including cell cycle progression and apoptosis. Autophosphorylation of serine 664 (serine 662 in mouse and rat) contributes to PKC delta activity. Serum dependent phosphorylation of serine 664 is mediated by mTOR pathway, is protected from dephosphorylation by phosphorylated threonine 505 in the activation loop, and is implicated in prolactin signaling.

Synonyms:

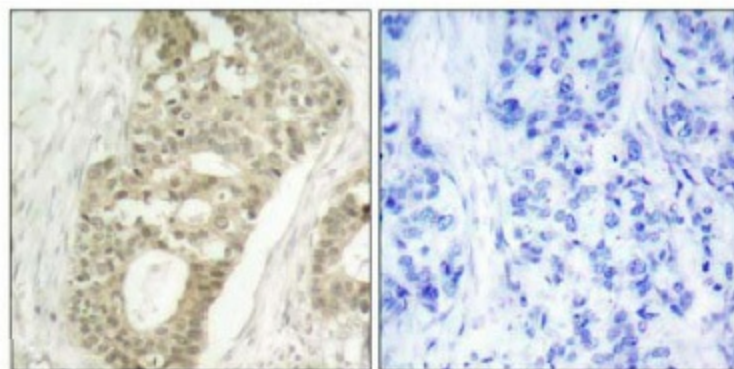
PKC-delta, PKC delta, PKCD, Protein kinase C delta type

Note:

Molecular Weight: 78 kDa

Product images:


Western blot analysis of extracts from PC12 cells untreated or treated with PMA using Phospho-Ser645 PKC-delta antibody.



Immunohistochemical analysis of paraffin-embedded human breast carcinoma tissue using Phospho-Ser645 PKC-delta antibody. (Left) or the same antibody preincubated with blocking peptide (Right).

P-Peptide - +