

Product datasheet for **AP02524PU-S**

CD61 (ITGB3) pTyr785 Rabbit Polyclonal Antibody

Product data:

Product Type:	Primary Antibodies
Applications:	WB
Recommended Dilution:	Western Blot: 1:500~1:1000.
Reactivity:	Human, Mouse
Host:	Rabbit
Clonality:	Polyclonal
Immunogen:	The antiserum was produced against synthesized phosphopeptide derived from human Integrin β 3 around the phosphorylation site of tyrosine 785 (I-T-YP-R-G).
Specificity:	Integrin β 3 antibody detects endogenous levels of Integrin β 3 only when phosphorylated at tyrosine 785.
Formulation:	PBS(without Mg^{2+} and Ca^{2+}), pH 7.4 containing 150mM NaCl, 0.02% sodium azide and 50% glycerol State: Aff - Purified State: Liquid purified IgG
Concentration:	lot specific
Purification:	The antibody was affinity-purified from rabbit antiserum by affinity-chromatography using epitope-specific phosphopeptide. The antibody against non-phosphopeptide was removed by chromatography using non-phosphopeptide corresponding to the phosphorylation site.
Conjugation:	Unconjugated
Storage:	Store the antibody at $-20^{\circ}C$. Avoid repeated freezing and thawing.
Stability:	Shelf life: one year from despatch.
Gene Name:	integrin subunit beta 3
Database Link:	Entrez Gene 3690 Human P05106

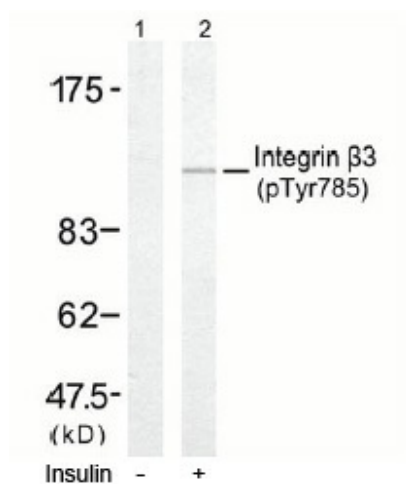


[View online »](#)

Background: Human Integrin beta 3 (CD61) antigen is a 90-110 kDa glycoprotein polypeptide which is expressed on platelets, megakaryocytes, macrophages, osteoclasts and synovial lining cells. The platelet glycoprotein is the integrin beta 3 chain of the vitronectin receptor and GPIIb/IIIa complex.

Synonyms: Integrin beta-3, GP3A, GPIIIa

Product images:



Western blot analysis of extract from A431 cells untreated or treated with Insulin (40ug/ml, 15min), using Integrin β 3 (pTyr785) antibody (Lane 1 and 2).