

Product datasheet for **AP02516PU-N**

S6K1 (RPS6KB1) pSer411 Rabbit Polyclonal Antibody

Product data:

Product Type:	Primary Antibodies
Applications:	IF, IHC, WB
Recommended Dilution:	Western Blot: 1/500-1/1000. Immunofluorescence: 1/100-1/200. Immunohistochemistry on Paraffin-Embedded Sections: 1/50-1/100.
Reactivity:	Human, Mouse, Rat
Host:	Rabbit
Clonality:	Polyclonal
Immunogen:	The antiserum was produced against synthesized phosphopeptide derived from human p70 S6 Kinase around the phosphorylation site of serine 411 (I-R-SP-P-R).
Specificity:	This antibody detects endogenous levels of p70 S6 Kinase only when phosphorylated at Serine 411.
Formulation:	PBS (without Mg ²⁺ and Ca ²⁺), pH 7.4, 150 mM NaCl, 0.02% Sodium Azide and 50% Glycerol. State: Aff - Purified State: Liquid purified Ig fraction.
Concentration:	lot specific
Purification:	Affinity Chromatography using epitope-specific phosphopeptide. The antibody against non-phosphopeptide was removed by chromatography using non-phosphopeptide corresponding to the phosphorylation site.
Conjugation:	Unconjugated
Storage:	Store the antibody (in aliquots) at -20°C. Avoid repeated freezing and thawing.
Stability:	Shelf life: One year from despatch.
Gene Name:	ribosomal protein S6 kinase B1
Database Link:	Entrez Gene 72508 Mouse Entrez Gene 83840 Rat Entrez Gene 6198 Human P23443
Synonyms:	Ribosomal protein S6 kinase I, S6K1, p70 S6 kinase alpha, p70 S6K-alpha, p70 S6KA, Serine/threonine-protein kinase 14A



[View online »](#)

Protein Families: Druggable Genome, Protein Kinase

Protein Pathways: Acute myeloid leukemia, ErbB signaling pathway, Fc gamma R-mediated phagocytosis, Insulin signaling pathway, mTOR signaling pathway, TGF-beta signaling pathway

Product images:

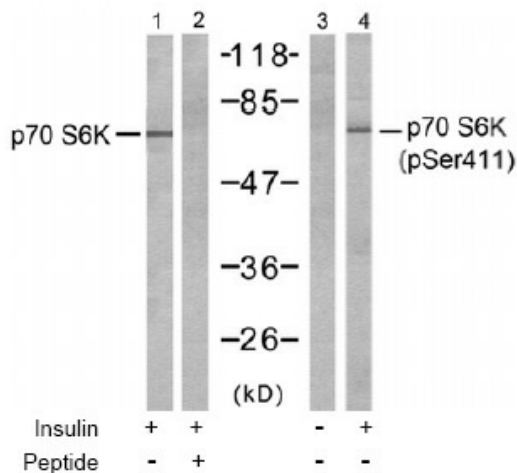


Figure 2. Western blot analysis of extracts from 293 cells, untreated or treated with insulin (10u/ml, 15min), using p70 S6 Kinase antibody (Lane 1 and 2) and p70 S6 Kinase pSer411 antibody (Lane 3 and 4).

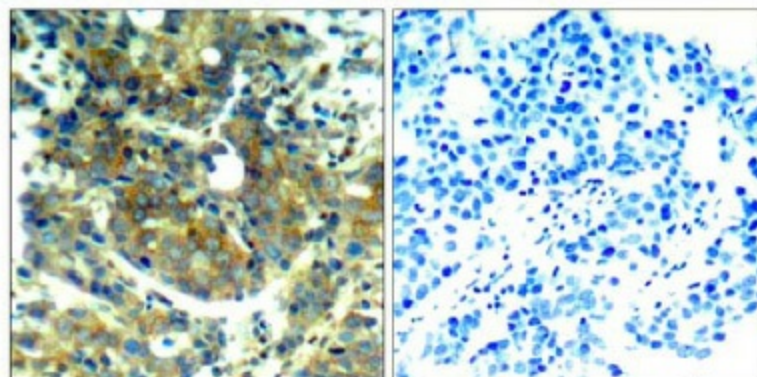


Figure 1. Immunohistochemical analysis of paraffin-embedded human breast carcinoma tissue, using p70 S6 Kinase pSer411 antibody

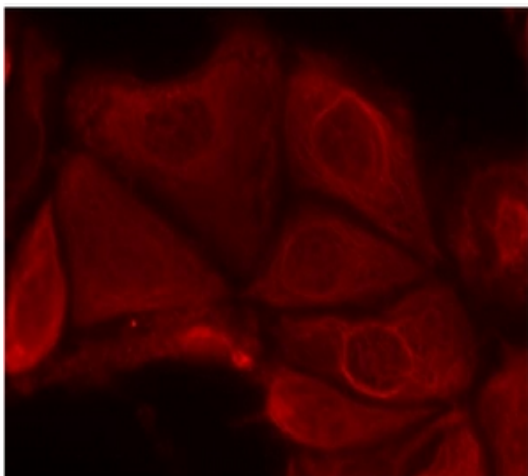


Figure 3. Immunofluorescence staining of methanol-fixed MCF7 cells using p70 S6 Kinase pSer411 antibody (Red).