

Product datasheet for **AP02514PU-N**

Synapsin I (SYN1) pSer9 Rabbit Polyclonal Antibody

Product data:

Product Type:	Primary Antibodies
Applications:	IF, WB
Recommended Dilution:	Western Blot: 1/500-1/1000. Immunofluorescence: 1/100-1/200.
Reactivity:	Human, Mouse, Rat
Host:	Rabbit
Isotype:	IgG
Clonality:	Polyclonal
Immunogen:	Synthesized phosphopeptide derived from Human Synapsin-1 around the phosphorylation site of Serine 9 (R-L-SP-D-S).
Specificity:	This antibody detects endogenous levels of Synapsin only when phosphorylated at Serine 9.
Formulation:	PBS (without Mg ²⁺ and Ca ²⁺), pH 7.4, 150 mM NaCl State: Aff - Purified State: Liquid purified Ig fraction Stabilizer: 50% Glycerol Preservative: 0.02% Sodium Azide
Concentration:	lot specific
Purification:	Affinity Chromatography using epitope-specific phosphopeptide. The antibody against non-phosphopeptide was removed by chromatography using non-phosphopeptide corresponding to the phosphorylation site.
Conjugation:	Unconjugated
Storage:	Store the antibody (in aliquots) at -20°C. Avoid repeated freezing and thawing.
Stability:	Shelf life: One year from despatch.
Predicted Protein Size:	77 kDa
Gene Name:	synapsin I
Database Link:	Entrez Gene 20964 Mouse Entrez Gene 24949 Rat Entrez Gene 6853 Human P17600

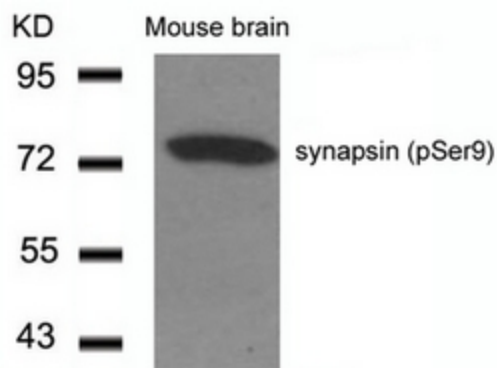


[View online »](#)

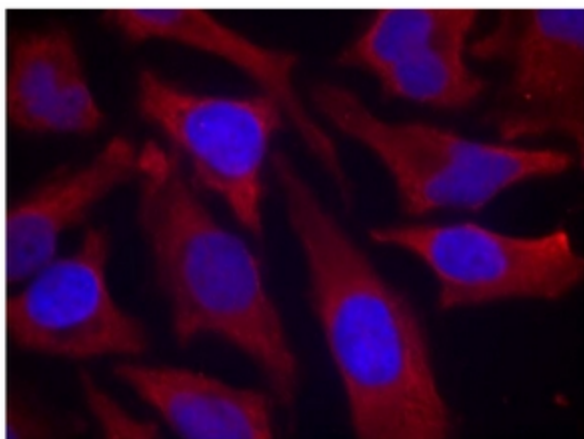
Background: Neuronal phosphoprotein that coats synaptic vesicles, binds to the cytoskeleton, and is believed to function in the regulation of neurotransmitter release. The complex formed with NOS1 and CAPON proteins is necessary for specific nitric-oxid functions at a presynaptic level.

Synonyms: Synapsin I, Brain protein 4.1, SYN1

Product images:



Western blot analysis of extract from Mouse Brain tissue, using Synapsin antibody Synapsin pSer9 antibody



Immunofluorescence staining of methanol-fixed HeLa cells using Synapsin pSer9 antibody (Red).