

Product datasheet for **AP02513PU-S**

NF2 pSer518 Rabbit Polyclonal Antibody

Product data:

Product Type:	Primary Antibodies
Applications:	IF, WB
Recommended Dilution:	Western Blot: 1/500-1/1000. Immunofluorescence: 1/100-1/200.
Reactivity:	Human, Mouse, Rat
Host:	Rabbit
Clonality:	Polyclonal
Immunogen:	The antiserum was produced against synthesized phosphopeptide derived from human Merlin around the phosphorylation site of serine 518 (R-L-SP-M-E).
Specificity:	AP02513PU antibody detects endogenous levels of Merlin only when phosphorylated at Serine 518.
Formulation:	PBS (without Mg ²⁺ and Ca ²⁺), pH 7.4, 150 mM NaCl, 0.02% Sodium Azide and 50% Glycerol. State: Aff - Purified State: Liquid purified Ig fraction.
Concentration:	lot specific
Purification:	Affinity Chromatography using epitope-specific phosphopeptide. The antibody against non-phosphopeptide was removed by chromatography using non-phosphopeptide corresponding to the phosphorylation site.
Conjugation:	Unconjugated
Storage:	Store the antibody (in aliquots) at -20°C. Avoid repeated freezing and thawing.
Stability:	Shelf life: One year from despatch.
Gene Name:	neurofibromin 2 (merlin)
Database Link:	Entrez Gene 4771 Human P35240



[View online »](#)

Background:

Neurofibromin 2 (NF2) is a tumor suppressor gene encoding the protein Merlin. Merlin is closely related to the ERM (ezrin, radixin, moesin) family of proteins. The precise function of Merlin is not clear. It is thought to provide a link between the actin cytoskeleton and membrane associated proteins, playing a role in transduction of extracellular signals. It has been implicated in cell proliferation and cellular motility.

Mutations in the NF2 gene cause neurofibromatosis type II, a condition characterised by the development of tumors in the central nervous system.

Synonyms:

Neurofibromin-2, NF2, SCH, Schwannomin, Schwannomerlin

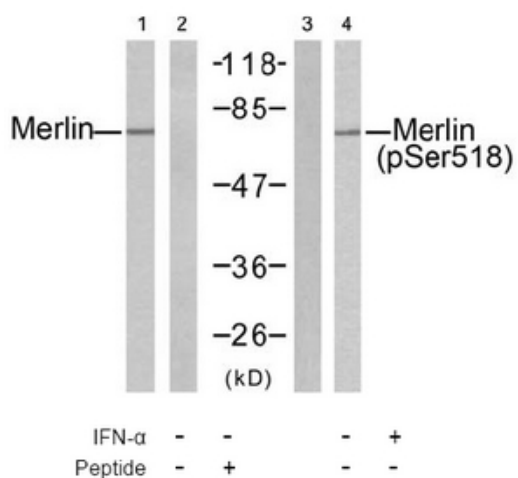
Product images:


Figure 1. Western blot analysis of extracts from HUVEC cells untreated or treated with IFN-alpha (100ng/ml, 15min), using Merlin antibody (Line 1 and 2) and Merlin pSer518 antibody (Line 3 and 4).

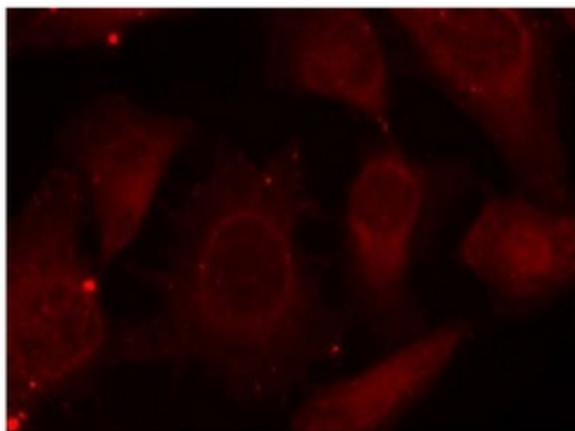


Figure 2. Immunofluorescence staining of methanol-fixed HeLa cells using Merlin pSer518 antibody (Red).