

## Product datasheet for **AP02508PU-S**

### **GJA1 pSer368 Rabbit Polyclonal Antibody**

#### **Product data:**

<b>Product Type:</b>	Primary Antibodies
<b>Applications:</b>	IHC, WB
<b>Recommended Dilution:</b>	Western Blot: 1/500~1/1000. Immunohistochemistry: 1/50~1/100 (Suitable for Paraffin Embedded Sections).
<b>Reactivity:</b>	Human, Mouse, Rat
<b>Host:</b>	Rabbit
<b>Clonality:</b>	Polyclonal
<b>Immunogen:</b>	The antiserum was produced against synthesized phosphopeptide derived from human Connexin-43 around the phosphorylation site of serine 367 (R-A-SP-S-R).
<b>Specificity:</b>	The antibody was affinity-purified from rabbit antiserum by affinity-chromatography using epitope-specific phosphopeptide. The antibody against non-phosphopeptide was removed by chromatography using non-phosphopeptide corresponding to the phosphorylation site. This antibody detects endogenous levels of Connexin43 only when phosphorylated at serine 367.
<b>Formulation:</b>	PBS(without Mg <sup>2+</sup> and Ca <sup>2+</sup> ), pH 7.4 containing 150mM NaCl, 0.02% sodium azide and 50% glycerol State: Aff - Purified State: Liquid purified IgG fraction.
<b>Concentration:</b>	lot specific
<b>Purification:</b>	Immunoaffinity Chromatography.
<b>Conjugation:</b>	Unconjugated
<b>Storage:</b>	Store the antibody (in aliquots) at -20°C. Avoid repeated freezing and thawing.
<b>Stability:</b>	Shelf life: one year from despatch.
<b>Gene Name:</b>	gap junction protein alpha 1
<b>Database Link:</b>	<a href="#">Entrez Gene 2697 Human P17302</a>



[View online »](#)

**Background:**

GJA1 is a member of the connexin gene family and a component of gap junctions. Gap junctions are composed of arrays of intercellular channels and provide a route for the diffusion of materials of low molecular weight from cell to cell. GJA1 is the major protein of gap junctions in the heart, and gap junctions are thought to have a crucial role in the synchronized contraction of the heart and in embryonic development. GJA1 is targeted by several protein kinases that regulate myocardial cell cell coupling. A related intronless GJA1 pseudogene, GJA1P, has been mapped to chromosome 5.

**Synonyms:**

Gap junction alpha-1 protein, Connexin-43, GJAL

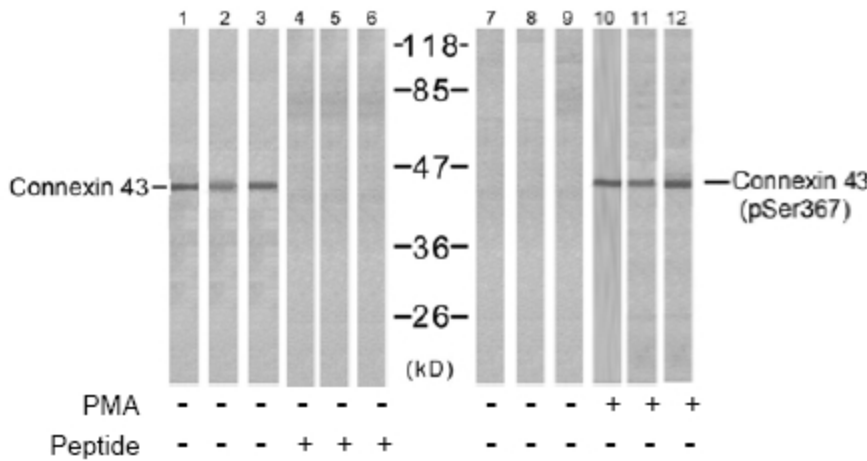
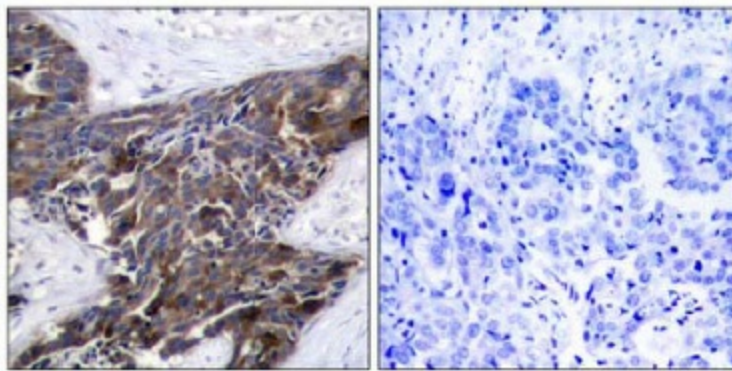
**Product images:**


Figure 2. Western blot analysis of extracts from HeLa (Line 1, 4, 7 and 10), K562 (Line 2, 5, 8 and 11) and 293 (Line 3, 6, 9 and 12) cells, untreated or treated with PMA (1 $\mu$ M 30min), using Connexin-43 antibody (Lane 1, 2, 3, 4, 5 and 6) and Connexin-43 (pSer367) antibody (Lane 7, 8, 9, 10, 11 and 12).



P-Peptide                      -                      +

Figure 1. Immunohistochemical analysis of paraffin-embedded human breast carcinoma tissue using Connexin43 antibody.