

## Product datasheet for **AP02507PU-N**

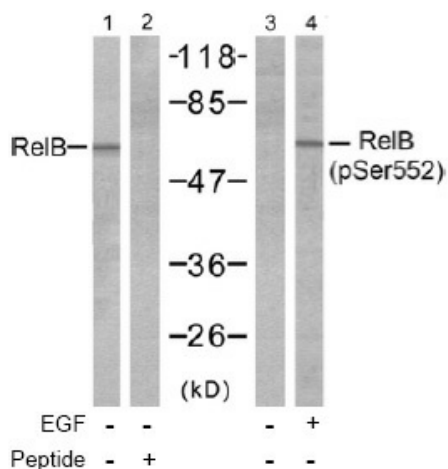
### Rel B (RELB) pSer552 Rabbit Polyclonal Antibody

#### Product data:

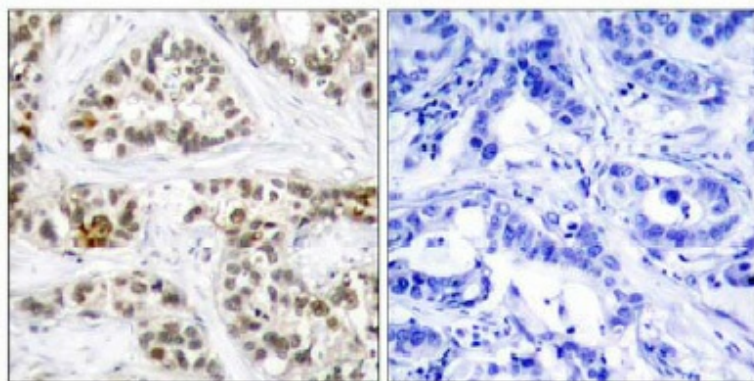
Product Type:	Primary Antibodies
Applications:	IHC, WB
Recommended Dilution:	Western Blot: 1:500~1:1000. Immunohistochemistry: 1:50~1:100.
Reactivity:	Human, Mouse, Rat
Host:	Rabbit
Clonality:	Polyclonal
Immunogen:	The antiserum was produced against synthesized phosphopeptide derived from human RelB around the phosphorylation site of serine 552 (L-L-SP-P-G).
Specificity:	RelB antibody detects endogenous levels of RelB only when phosphorylated at serine 552.
Formulation:	PBS(without Mg <sup>2+</sup> and Ca <sup>2+</sup> ), pH 7.4 containing 150mM NaCl, 0.02% sodium azide and 50% glycerol State: Aff - Purified State: Liquid purified IgG
Concentration:	lot specific
Purification:	The antibody was affinity-purified from rabbit antiserum by affinity-chromatography using epitope-specific phosphopeptide. The antibody against non-phosphopeptide was removed by chromatography using non-phosphopeptide corresponding to the phosphorylation site.
Conjugation:	Unconjugated
Storage:	Store the antibody at -20°C. Avoid repeated freezing and thawing.
Stability:	Shelf life: one year from despatch.
Gene Name:	RELB proto-oncogene, NF-kB subunit
Database Link:	<a href="#">Entrez Gene 5971 Human Q01201</a>
Synonyms:	Rel B, Transcription factor RelB



[View online »](#)

**Product images:**


Western blot analysis of extracts from A431 cells, untreated or treated with EGF (200ng/ml 10min), using RelB antibody (Line 1 and 2) and RelB (pSer552) antibody (Line 3 and 4).



P-Peptide                      -                      +

Immunohistochemical analysis of paraffin-embedded human breast carcinoma tissue using RelB antibody.