

## Product datasheet for **AP02506PU-S**

### **S6K1 (RPS6KB1) pThr421 Rabbit Polyclonal Antibody**

#### **Product data:**

<b>Product Type:</b>	Primary Antibodies
<b>Applications:</b>	IF, IHC, WB
<b>Recommended Dilution:</b>	Western Blot: 1/500-1/1000. Immunofluorescence: 1/100-1/200. Immunohistochemistry on Paraffin-Embedded Sections: 1/50-1/100.
<b>Reactivity:</b>	Human, Mouse, Rat
<b>Host:</b>	Rabbit
<b>Clonality:</b>	Polyclonal
<b>Immunogen:</b>	The antiserum was produced against synthesized phosphopeptide derived from human p70 S6 Kinase around the phosphorylation site of threonine 421 (P-R-TP-P-V).
<b>Specificity:</b>	This antibody detects endogenous levels of p70 S6 Kinase only when phosphorylated at threonine 421.
<b>Formulation:</b>	PBS (without Mg <sup>2+</sup> and Ca <sup>2+</sup> ), pH 7.4, 150 mM NaCl, 0.02% Sodium Azide and 50% Glycerol. State: Aff - Purified State: Liquid purified Ig fraction.
<b>Concentration:</b>	lot specific
<b>Purification:</b>	Affinity Chromatography using epitope-specific phosphopeptide.
<b>Conjugation:</b>	Unconjugated
<b>Storage:</b>	Store the antibody (in aliquots) at -20°C. Avoid repeated freezing and thawing.
<b>Stability:</b>	Shelf life: One year from despatch.
<b>Gene Name:</b>	ribosomal protein S6 kinase B1
<b>Database Link:</b>	<a href="#">Entrez Gene 72508 Mouse</a> <a href="#">Entrez Gene 83840 Rat</a> <a href="#">Entrez Gene 6198 Human P23443</a>
<b>Synonyms:</b>	Ribosomal protein S6 kinase I, S6K1, p70 S6 kinase alpha, p70 S6K-alpha, p70 S6KA, Serine/threonine-protein kinase 14A
<b>Protein Families:</b>	Druggable Genome, Protein Kinase



[View online »](#)

**Protein Pathways:** Acute myeloid leukemia, ErbB signaling pathway, Fc gamma R-mediated phagocytosis, Insulin signaling pathway, mTOR signaling pathway, TGF-beta signaling pathway

**Product images:**

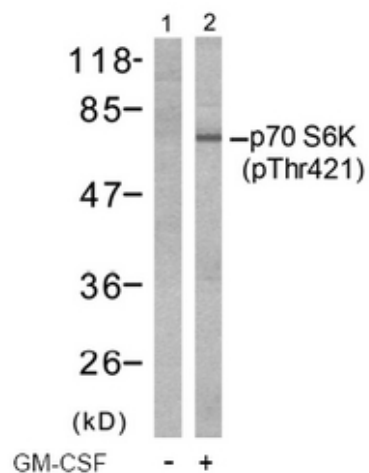


Figure 2. Western blot analysis of extracts from Jurkat cells, untreated or treated with GM-CSF (25ng/ml 30min) using p70 S6 Kinase pThr421 antibody (Line 1 and 2).

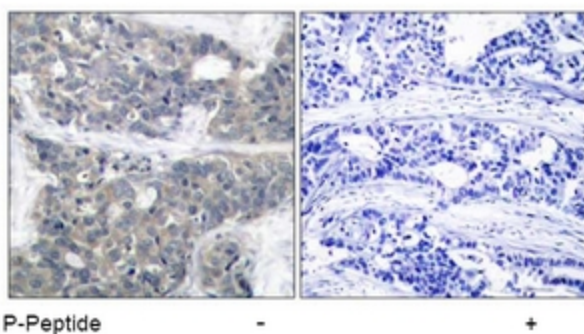


Figure 1. Immunohistochemical analysis of paraffin-embedded human breast carcinoma tissue using p70 S6 Kinase pThr421 antibody

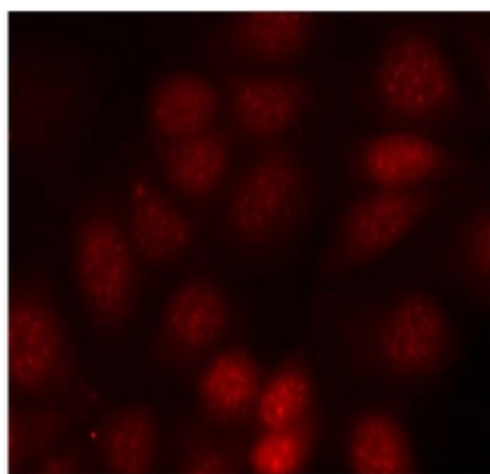


Figure 3. Immunofluorescence staining of methanol-fixed MCF7 cells using p70 S6 Kinase pThr421 antibody (Red).