

Product datasheet for **AP02506PU-N**

S6K1 (RPS6KB1) pThr421 Rabbit Polyclonal Antibody

Product data:

Product Type:	Primary Antibodies
Applications:	IF, IHC, WB
Recommended Dilution:	Western Blot: 1/500-1/1000. Immunofluorescence: 1/100-1/200. Immunohistochemistry on Paraffin-Embedded Sections: 1/50-1/100.
Reactivity:	Human, Mouse, Rat
Host:	Rabbit
Clonality:	Polyclonal
Immunogen:	The antiserum was produced against synthesized phosphopeptide derived from human p70 S6 Kinase around the phosphorylation site of threonine 421 (P-R-TP-P-V).
Specificity:	This antibody detects endogenous levels of p70 S6 Kinase only when phosphorylated at threonine 421.
Formulation:	PBS (without Mg ²⁺ and Ca ²⁺), pH 7.4, 150 mM NaCl, 0.02% Sodium Azide and 50% Glycerol. State: Aff - Purified State: Liquid purified Ig fraction.
Concentration:	lot specific
Purification:	Affinity Chromatography using epitope-specific phosphopeptide.
Conjugation:	Unconjugated
Storage:	Store the antibody (in aliquots) at -20°C. Avoid repeated freezing and thawing.
Stability:	Shelf life: One year from despatch.
Gene Name:	ribosomal protein S6 kinase B1
Database Link:	Entrez Gene 72508 Mouse Entrez Gene 83840 Rat Entrez Gene 6198 Human P23443
Synonyms:	Ribosomal protein S6 kinase I, S6K1, p70 S6 kinase alpha, p70 S6K-alpha, p70 S6KA, Serine/threonine-protein kinase 14A
Protein Families:	Druggable Genome, Protein Kinase



[View online »](#)

Protein Pathways:

Acute myeloid leukemia, ErbB signaling pathway, Fc gamma R-mediated phagocytosis, Insulin signaling pathway, mTOR signaling pathway, TGF-beta signaling pathway

Product images:

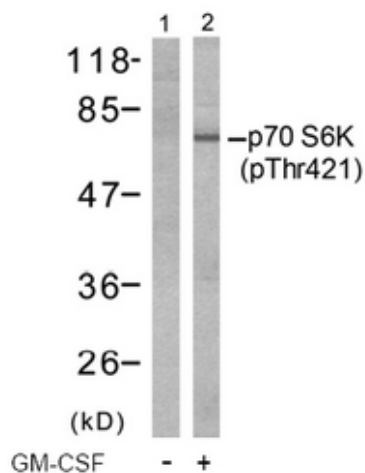


Figure 2. Western blot analysis of extracts from Jurkat cells, untreated or treated with GM-CSF (25ng/ml 30min) using p70 S6 Kinase pThr421 antibody (Line 1 and 2).

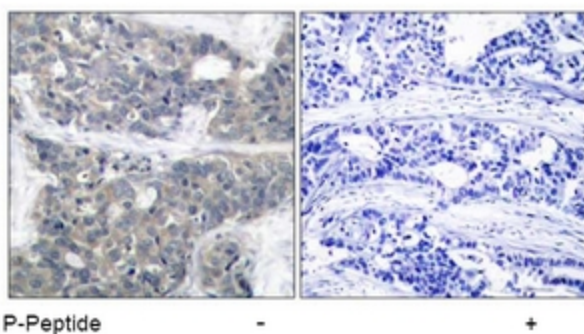


Figure 1. Immunohistochemical analysis of paraffin-embedded human breast carcinoma tissue using p70 S6 Kinase pThr421 antibody

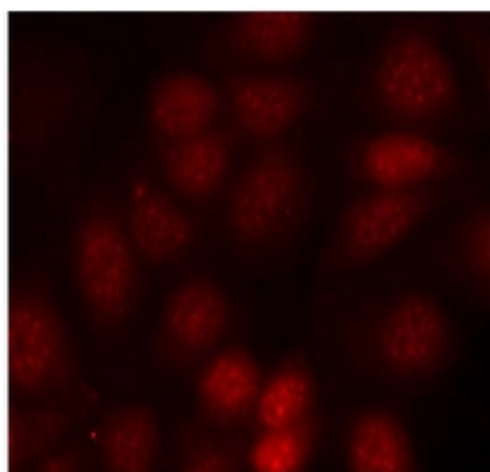


Figure 3. Immunofluorescence staining of methanol-fixed MCF7 cells using p70 S6 Kinase pThr421 antibody (Red).