

Product datasheet for **AP02505PU-S**

p38 (MAPK14) pTyr182 Rabbit Polyclonal Antibody

Product data:

Product Type:	Primary Antibodies
Applications:	IHC, WB
Recommended Dilution:	Western Blot: 1/500~1/1000. Immunohistochemistry: 1/50~1/100.
Reactivity:	Human
Host:	Rabbit
Clonality:	Polyclonal
Immunogen:	The antiserum was produced against synthesized phosphopeptide derived from Human p38 MAPK around the phosphorylation site of tyrosine 182 (T-G-YP-V-A).
Specificity:	This antibody detects endogenous levels of P38MAPK only when phosphorylated at Tyrosine 182.
Formulation:	PBS (without Mg ²⁺ and Ca ²⁺), pH 7.4, 150 mM NaCl, 0.02% Sodium Azide and 50% Glycerol. State: Aff - Purified State: Liquid purified Ig fraction.
Concentration:	lot specific
Purification:	Immunoaffinity Chromatography using epitope-specific phosphopeptide.
Conjugation:	Unconjugated
Storage:	Store the antibody (in aliquots) at -20°C. Avoid repeated freezing and thawing.
Stability:	Shelf life: One year from despatch.
Gene Name:	mitogen-activated protein kinase 14
Database Link:	Entrez Gene 1432 Human Q16539
Synonyms:	Mitogen-activated protein kinase 14, p38 alpha, MXI2, SAPK2A, CSBP, CSBP1, CSBP2, CSPB1
Note:	For western blotting, incubate membrane with diluted antibody in 5% nonfat milk, 1X TBS, 0.1% Tween-20 at 4°C with gentle shaking, overnight.
Protein Families:	Druggable Genome, Protein Kinase

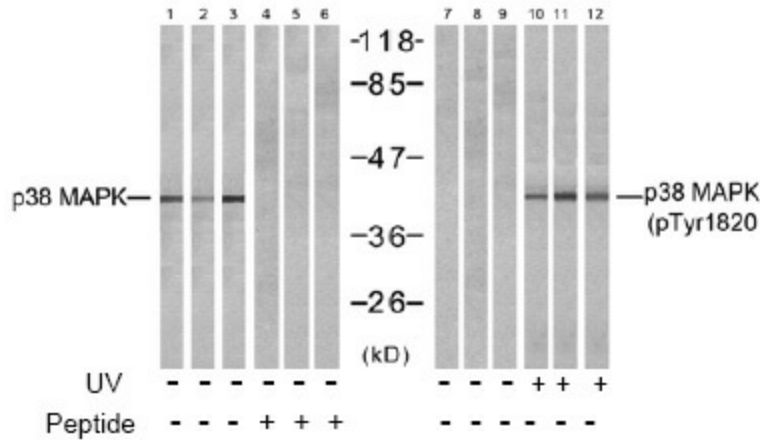


[View online »](#)

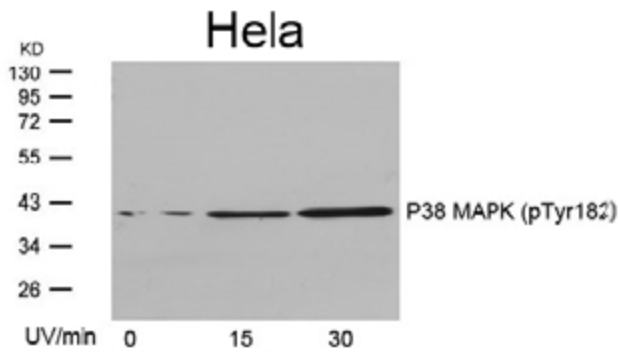
Protein Pathways:

Amyotrophic lateral sclerosis (ALS), Epithelial cell signaling in Helicobacter pylori infection, Fc epsilon RI signaling pathway, GnRH signaling pathway, Leukocyte transendothelial migration, MAPK signaling pathway, Neurotrophin signaling pathway, NOD-like receptor signaling pathway, Progesterone-mediated oocyte maturation, RIG-I-like receptor signaling pathway, T cell receptor signaling pathway, Toll-like receptor signaling pathway, VEGF signaling pathway

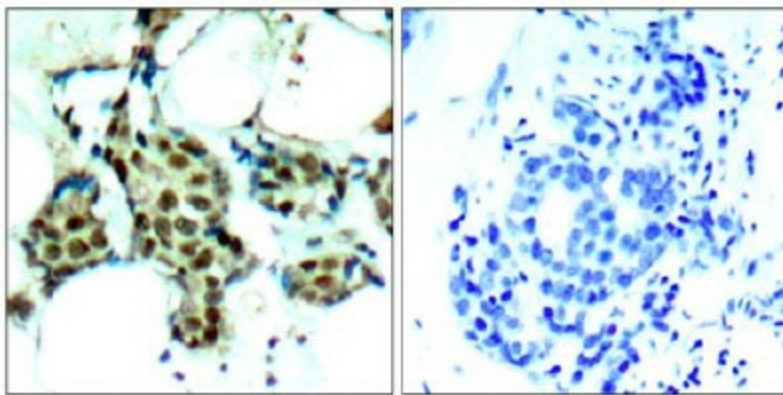
Product images:



Western blot analysis of extracts from HeLa cells untreated or treated with UV for the indicated times, using P38 MAPK antibody (Phospho-Tyr182).



Western blot analysis of extracts from NIH-3T3 (Line 1, 4, 7 and 10) and cos7 (Line 2, 5, 8 and 11 and K562 (Line 3, 6, 9 and 12) cells, untreated or treated with UV (20min), using P38 MAPK antibody (Lane 1, 2, 3, 4, 5 and 6) and P38 MAPK (pTyr182) antibody (Lane 7, 8, 9, 10, 11 and 12).



P-Peptide

-

+

Immunohistochemical analysis of paraffin-embedded human breast carcinoma tissue, using P38 MAPK antibody.