

## Product datasheet for **AP02505PU-N**

### **p38 (MAPK14) pTyr182 Rabbit Polyclonal Antibody**

#### **Product data:**

<b>Product Type:</b>	Primary Antibodies
<b>Applications:</b>	IHC, WB
<b>Recommended Dilution:</b>	Western Blot: 1/500~1/1000. Immunohistochemistry: 1/50~1/100.
<b>Reactivity:</b>	Human
<b>Host:</b>	Rabbit
<b>Clonality:</b>	Polyclonal
<b>Immunogen:</b>	The antiserum was produced against synthesized phosphopeptide derived from Human p38 MAPK around the phosphorylation site of tyrosine 182 (T-G-YP-V-A).
<b>Specificity:</b>	This antibody detects endogenous levels of P38MAPK only when phosphorylated at Tyrosine 182.
<b>Formulation:</b>	PBS (without Mg <sup>2+</sup> and Ca <sup>2+</sup> ), pH 7.4, 150 mM NaCl, 0.02% Sodium Azide and 50% Glycerol. State: Aff - Purified State: Liquid purified Ig fraction.
<b>Concentration:</b>	lot specific
<b>Purification:</b>	Immunoaffinity Chromatography using epitope-specific phosphopeptide.
<b>Conjugation:</b>	Unconjugated
<b>Storage:</b>	Store the antibody (in aliquots) at -20°C. Avoid repeated freezing and thawing.
<b>Stability:</b>	Shelf life: One year from despatch.
<b>Gene Name:</b>	mitogen-activated protein kinase 14
<b>Database Link:</b>	<a href="#">Entrez Gene 1432 Human Q16539</a>
<b>Synonyms:</b>	Mitogen-activated protein kinase 14, p38 alpha, MXI2, SAPK2A, CSBP, CSBP1, CSBP2, CSPB1
<b>Note:</b>	For western blotting, incubate membrane with diluted antibody in 5% nonfat milk, 1X TBS, 0.1% Tween-20 at 4°C with gentle shaking, overnight.
<b>Protein Families:</b>	Druggable Genome, Protein Kinase

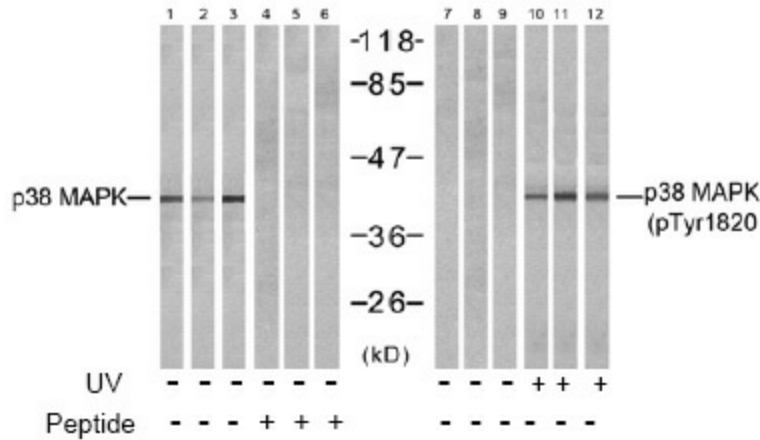


[View online »](#)

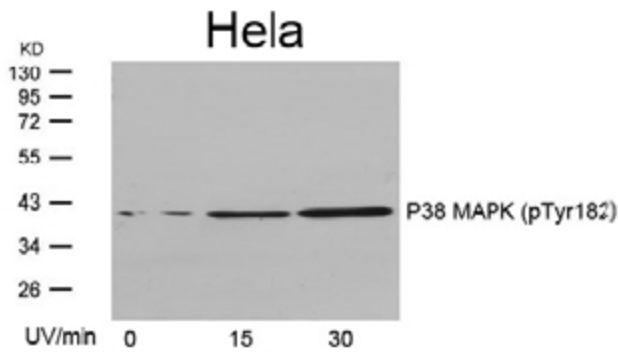
**Protein Pathways:**

Amyotrophic lateral sclerosis (ALS), Epithelial cell signaling in Helicobacter pylori infection, Fc epsilon RI signaling pathway, GnRH signaling pathway, Leukocyte transendothelial migration, MAPK signaling pathway, Neurotrophin signaling pathway, NOD-like receptor signaling pathway, Progesterone-mediated oocyte maturation, RIG-I-like receptor signaling pathway, T cell receptor signaling pathway, Toll-like receptor signaling pathway, VEGF signaling pathway

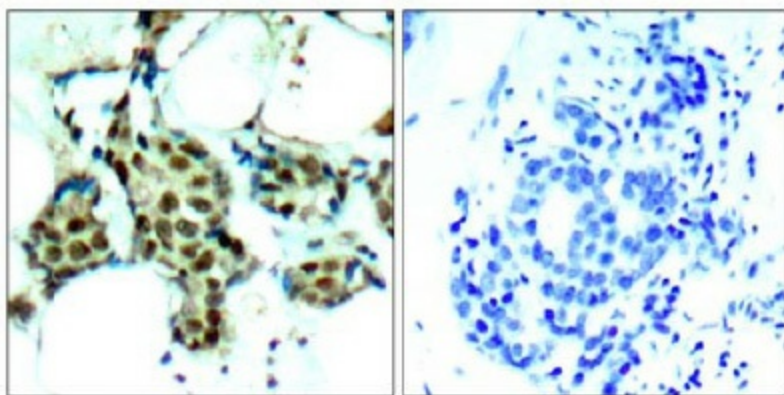
**Product images:**



Western blot analysis of extracts from HeLa cells untreated or treated with UV for the indicated times, using P38 MAPK antibody (Phospho-Tyr182).



Western blot analysis of extracts from NIH-3T3 (Line 1, 4, 7 and 10) and cos7 (Line 2, 5, 8 and 11 and K562 (Line 3, 6, 9 and 12) cells, untreated or treated with UV (20min), using P38 MAPK antibody (Lane 1, 2, 3, 4, 5 and 6) and P38 MAPK (pTyr182) antibody (Lane 7, 8, 9, 10, 11 and 12).



P-Peptide

-

+

Immunohistochemical analysis of paraffin-embedded human breast carcinoma tissue, using P38 MAPK antibody.