

## Product datasheet for **AP02491PU-N**

### EIF4E pSer209 Rabbit Polyclonal Antibody

#### Product data:

Product Type:	Primary Antibodies
Applications:	IF, IHC, WB
Recommended Dilution:	Western Blot: 1/500-1/1000. Immunofluorescence: 1/100-1/200. Immunohistochemistry on Paraffin-Embedded Sections: 1/50-1/100.
Reactivity:	Human, Mouse, Rat
Host:	Rabbit
Clonality:	Polyclonal
Immunogen:	The antiserum was produced against synthesized phosphopeptide derived from human eIF4E around the phosphorylation site of serine 209 (S-G-SP-T-T).
Specificity:	This antibody detects endogenous levels of eIF4E only when phosphorylated at Serine 209.
Formulation:	PBS (without Mg <sup>2+</sup> and Ca <sup>2+</sup> ), pH 7.4, 150 mM NaCl, 0.02% Sodium Azide and 50% Glycerol. State: Aff - Purified State: Liquid purified Ig fraction.
Concentration:	lot specific
Purification:	Affinity Chromatography using epitope-specific phosphopeptide.
Conjugation:	Unconjugated
Storage:	Store the antibody (in aliquots) at -20°C. Avoid repeated freezing and thawing.
Stability:	Shelf life: One year from despatch.
Gene Name:	eukaryotic translation initiation factor 4E
Database Link:	<a href="#">Entrez Gene 1977 Human P06730</a>



[View online »](#)

**Background:**

eIF4E, a protein modulates translation of maternal mRNAs in early embryos before the onset of zygotic transcription. eIF4E also influences the overall rate of translation. eIF4E binds to the 7 methyl GTP cap structure of eukaryotic mRNAs. Phosphorylation of eIF4E on serine 209 regulates the affinity of this protein for the 7 methyl GTP cap and/or RNA. Phosphorylation also enhances the interaction of eIF4E with eIF4G, which form a complex known as eIF4F. eIF4E phosphorylation is correlated with increased translational rate in a number of cell types. Several kinases are currently being investigated as potential regulators of eIF4E including PKC and/or the MAP kinase activated Mnk.

**Synonyms:**

eIF-4F 25 kDa subunit, EIF-4E, EIF4EL1, EIF4F

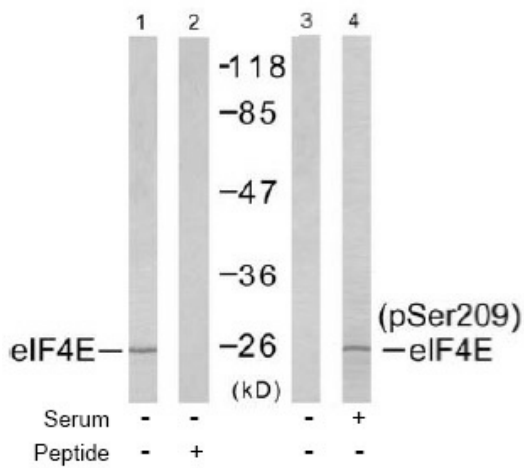
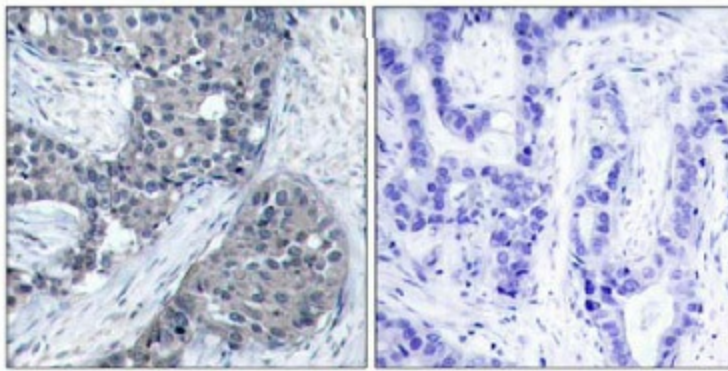
**Product images:**


Figure 2. Western blot analysis of extract from NIH/3T3 cells untreated or treated with 10% serum (15min), using eIF4E antibody (Lane 1 and 2) and eIF4E pSer209 antibody (Line 3 and 4).



P-Peptide                      -                      +

Figure 1. Immunohistochemical analysis of paraffin-embedded human breast carcinoma tissue, using eIF4E pSer209 antibody

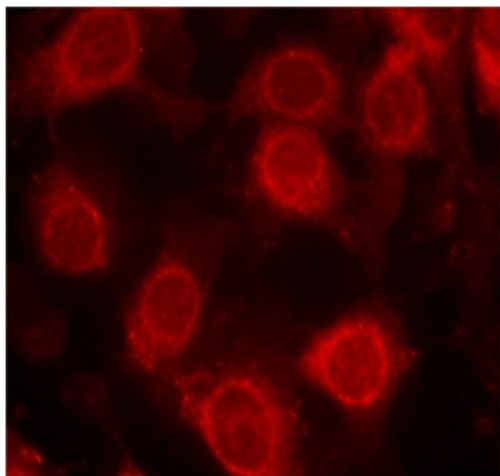


Figure 3. Immunofluorescence staining of methanol-fixed MCF7 cells using eIF4E pSer209 antibody (Red).