

Product datasheet for **AP02490PU-N**

RPS6 pSer235 Rabbit Polyclonal Antibody

Product data:

Product Type:	Primary Antibodies
Applications:	IF, WB
Recommended Dilution:	Western Blot: 1/500-1/1000. Immunofluorescence: 1/100-1/200.
Reactivity:	Human, Mouse, Rat
Host:	Rabbit
Clonality:	Polyclonal
Immunogen:	The antiserum was produced against synthesized phosphopeptide derived from human S6 Ribosomal protein around the phosphorylation site of serine 235 (R-L-SP-S-L).
Specificity:	This antibody detects endogenous levels of S6 Ribosomal protein only when phosphorylated at Serine 235.
Formulation:	PBS (without Mg ²⁺ and Ca ²⁺), pH 7.4, 150 mM NaCl, 0.02% Sodium Azide and 50% Glycerol. State: Aff - Purified State: Liquid purified Ig fraction
Concentration:	lot specific
Purification:	Affinity Chromatography using epitope-specific phosphopeptide. The antibody against non-phosphopeptide was removed by chromatography using non-phosphopeptide corresponding to the phosphorylation site.
Conjugation:	Unconjugated
Storage:	Store the antibody (in aliquots) at -20°C. Avoid repeated freezing and thawing.
Stability:	Shelf life: One year from despatch.
Gene Name:	ribosomal protein S6
Database Link:	Entrez Gene 20104 Mouse Entrez Gene 29304 Rat Entrez Gene 6194 Human P62753
Synonyms:	Phosphoprotein NP33, 40S ribosomal protein S6
Protein Pathways:	Insulin signaling pathway, mTOR signaling pathway, Ribosome



[View online »](#)

Product images:

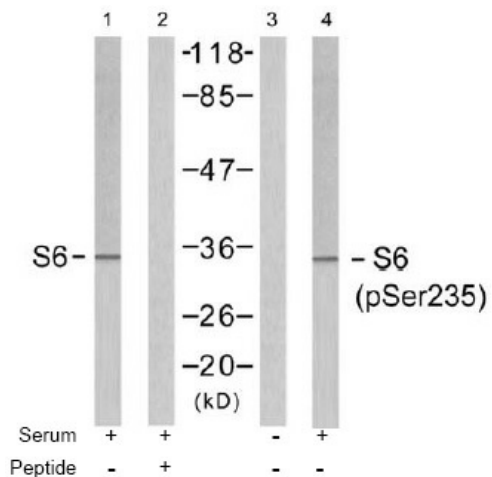


Figure 1. Western blot analysis of the extracts from 293 cells untreated or treated with serum (10%, 15min), using Ribosomal protein antibody (Lane 1 and 2) and S6 Ribosomal protein (pSer235) antibody (Line 3 and 4).

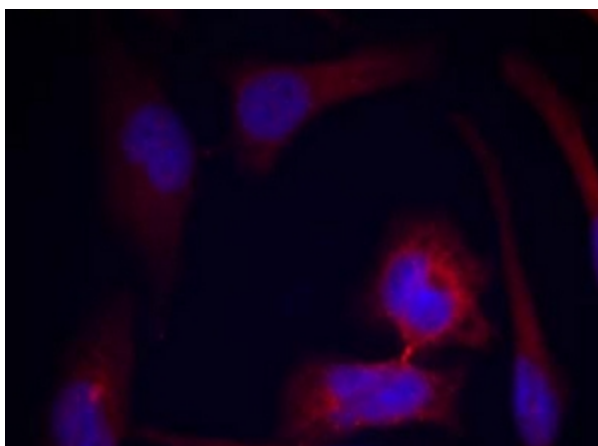


Figure 2. Immunofluorescence staining of methanol-fixed HeLa cells using S6 Ribosomal protein (phospho-Ser235) antibody (Red).