

Product datasheet for **AP02483PU-N**

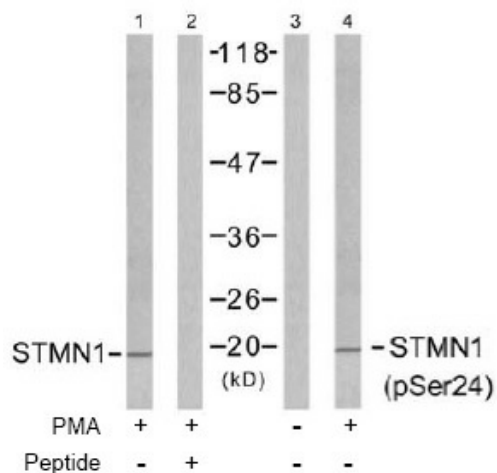
Stathmin 1 (STMN1) pSer24 Rabbit Polyclonal Antibody

Product data:

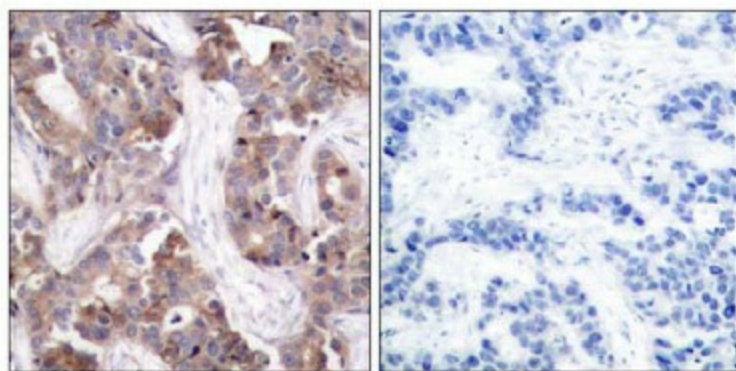
Product Type:	Primary Antibodies
Applications:	IHC, WB
Recommended Dilution:	Western Blot: 1:500~1:1000. Immunohistochemistry: 1:50~1:100.
Reactivity:	Human, Mouse
Host:	Rabbit
Clonality:	Polyclonal
Immunogen:	The antiserum was produced against synthesized phosphopeptide derived from human Stathmin 1 around the phosphorylation site of serine 24 (I-L-SP-P-R).
Specificity:	Stathmin 1 antibody detects endogenous levels of Stathmin 1 only when phosphorylated at serine 24.
Formulation:	PBS(without Mg ²⁺ and Ca ²⁺), pH 7.4 containing 150mM NaCl, 0.02% sodium azide and 50% glycerol State: Aff - Purified State: Liquid purified IgG
Concentration:	lot specific
Purification:	The antibody was affinity-purified from rabbit antiserum by affinity-chromatography using epitope-specific phosphopeptide. The antibody against non-phosphopeptide was removed by chromatography using non-phosphopeptide corresponding to the phosphorylation site.
Conjugation:	Unconjugated
Storage:	Store the antibody at -20°C. Avoid repeated freezing and thawing.
Stability:	Shelf life: one year from despatch.
Gene Name:	stathmin 1
Database Link:	Entrez Gene 3925 Human P16949
Synonyms:	LAP18, OP18, Phosphoprotein p19, pp19, Leukemia-associated phosphoprotein p18, Oncoprotein 18, Op18, pp17, ProsoLin, Metablastin, Protein Pr22



[View online »](#)

Product images:


Western blot analysis of extracts from Jurkat cells untreated or treated with PMA (1ng/ml, 15min), using Stathmin 1 (pSer24) antibody (Line 3 and 4).



P-Peptide - +

Immunohistochemical analysis of paraffin-embedded human breast carcinoma tissue using Stathmin 1 antibody.