

## Product datasheet for **AP02482PU-N**

### EIF4EBP1 pThr45 Rabbit Polyclonal Antibody

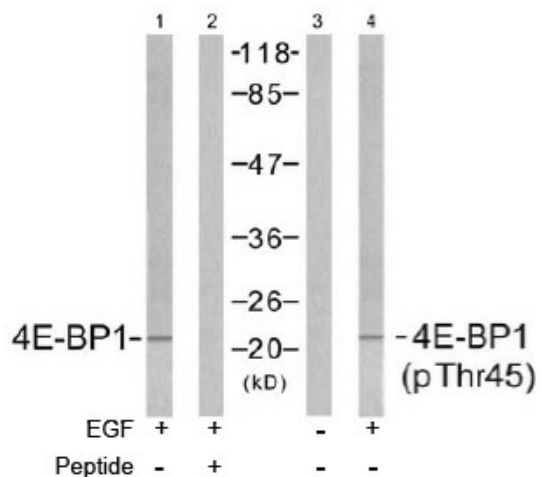
#### Product data:

Product Type:	Primary Antibodies
Applications:	IHC, WB
Recommended Dilution:	Western Blot: 1:500~1:1000. Immunohistochemistry: 1:50~1:100.
Reactivity:	Human, Mouse
Host:	Rabbit
Clonality:	Polyclonal
Immunogen:	The antiserum was produced against synthesized phosphopeptide derived from human 4E-BP1 around the phosphorylation site of threonine 45 (S-T-TP-P-G).
Specificity:	4E-BP1 antibody detects endogenous levels of 4E-BP1 only when phosphorylated at threonine 45. This antibody may cross-react with 4E-BP2 and 4E-BP3 when phosphorylated at equivalent sites.
Formulation:	PBS(without Mg <sup>2+</sup> and Ca <sup>2+</sup> ), pH 7.4 containing 150mM NaCl, 0.02% sodium azide and 50% glycerol State: Aff - Purified State: Liquid purified IgG
Concentration:	lot specific
Purification:	The antibody was affinity-purified from rabbit antiserum by affinity-chromatography using epitope-specific phosphopeptide. The antibody against non-phosphopeptide was removed by chromatography using non-phosphopeptide corresponding to the phosphorylation site.
Conjugation:	Unconjugated
Storage:	Store the antibody at -20°C. Avoid repeated freezing and thawing.
Stability:	Shelf life: one year from despatch.
Gene Name:	eukaryotic translation initiation factor 4E binding protein 1
Database Link:	<a href="#">Entrez Gene 1978 Human Q13541</a>
Synonyms:	PHAS-I, PHAS-1, PHAS1

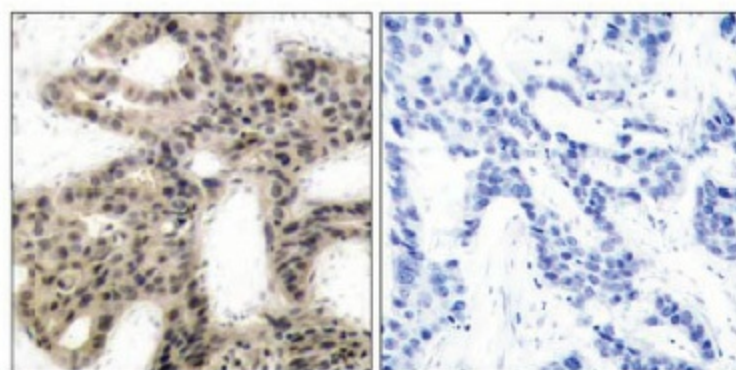


[View online »](#)

Product images:



Western blot analysis of extracts from MDA435 cells untreated or treated with EGF (200nm, 5min), using 4E-BP1 (pThr45) antibody (Lane 3 and 4).



P-Peptide - +

Immunohistochemical analysis of paraffin-embedded human breast carcinoma tissue using 4E-BP1 antibody.