

## Product datasheet for **AP02478PU-S**

### beta Catenin (CTNNB1) pSer37 Rabbit Polyclonal Antibody

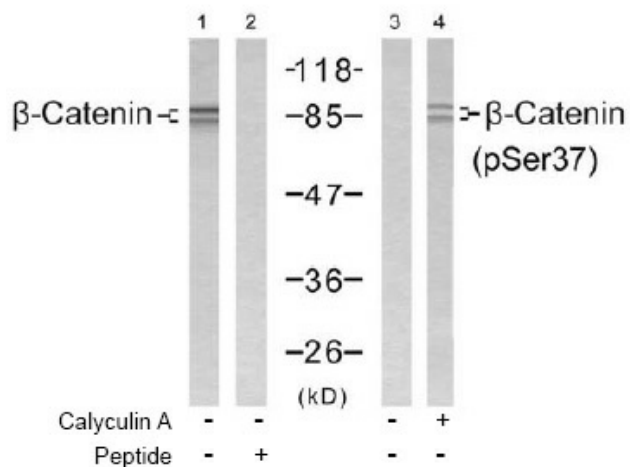
#### Product data:

Product Type:	Primary Antibodies
Applications:	IHC, WB
Recommended Dilution:	Western Blot: 1:500~1:1000. Immunohistochemistry: 1:50~1:100.
Reactivity:	Human, Mouse, Rat
Host:	Rabbit
Clonality:	Polyclonal
Immunogen:	The antiserum was produced against synthesized phosphopeptide derived from human beta-Catenin around the phosphorylation site of serine 37 (I-H-SP-G-A).
Specificity:	Beta-Catenin antibody detects endogenous levels of $\beta$ -Catenin only when phosphorylated at serine 37.
Formulation:	PBS(without Mg <sup>2+</sup> and Ca <sup>2+</sup> ), pH 7.4 containing 150mM NaCl, 0.02% sodium azide and 50% glycerol State: Aff - Purified State: Liquid purified IgG
Concentration:	lot specific
Purification:	The antibody was affinity-purified from rabbit antiserum by affinity-chromatography using epitope-specific phosphopeptide. The antibody against non-phosphopeptide was removed by chromatography using non-phosphopeptide corresponding to the phosphorylation site.
Conjugation:	Unconjugated
Storage:	Store the antibody at -20°C. Avoid repeated freezing and thawing.
Stability:	Shelf life: one year from despatch.
Gene Name:	catenin beta 1
Database Link:	<a href="#">Entrez Gene 1499 Human P35222</a>
Synonyms:	CTNNB1, CTNNB, Beta-catenin

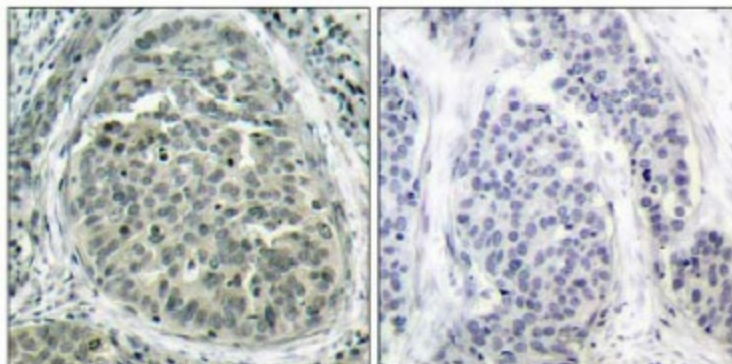


[View online »](#)

Product images:



Western blot analysis of extract from SW 626 cells, using  $\beta$ -Catenin (pSer37) antibody (Lane 3 and 4).



P-Peptide - +

Immunohistochemical analysis of paraffin-embedded human breast carcinoma tissue, using  $\beta$ -Catenin antibody.