

Product datasheet for **AP02477PU-N**

beta Catenin (CTNNB1) pSer33 Rabbit Polyclonal Antibody

Product data:

Product Type:	Primary Antibodies
Applications:	IF, IHC, WB
Recommended Dilution:	Western Blot: 1/500 - 1/1000; Incubate membrane with diluted antibody in 5% nonfat milk, 1X TBS, 0,1% Tween-20 at 4°C with gentle shaking, overnight. Immunohistochemistry on paraffin sections: 1/50 - 1/100. Immunofluorescence.
Reactivity:	Human, Mouse, Rat
Host:	Rabbit
Clonality:	Polyclonal
Immunogen:	Synthetic phosphopeptide derived from human beta-Catenin around the phosphorylation site of serine 33 (L-D-SP-G-I).
Specificity:	Beta-Catenin antibody detects endogenous levels of beta-Catenin only when phosphorylated at serine 33.
Formulation:	BPS(without Mg ²⁺ and Ca ²⁺), pH 7.4 containing 150mM NaCl, 0.02% sodium azide and 50% glycerol State: Aff - Purified State: Liquid purified IgG fraction
Concentration:	lot specific
Purification:	Affinity chromatography
Conjugation:	Unconjugated
Storage:	Store the antibody at -20°C. Avoid repeated freezing and thawing.
Stability:	Shelf life: one year from despatch.
Gene Name:	catenin beta 1
Database Link:	Entrez Gene 1499 Human P35222



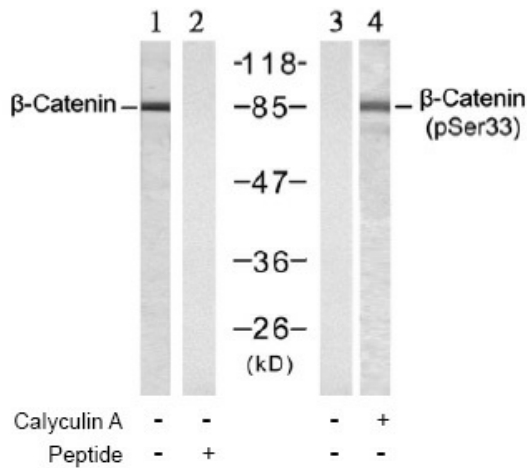
[View online »](#)

Background:

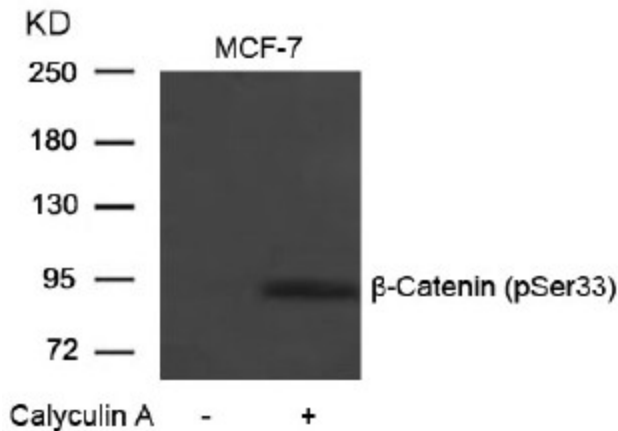
Key downstream component of the canonical Wnt signaling pathway. In the absence of Wnt, forms a complex with AXIN1, AXIN2, APC, CSNK1A1 and GSK3B that promotes phosphorylation on N-terminal Ser and Thr residues and ubiquitination of CTNNB1 via BTRC and its subsequent degradation by the proteasome. In the presence of Wnt ligand, CTNNB1 is not ubiquitinated and accumulates in the nucleus, where it acts as a coactivator for transcription factors of the TCF/LEF family, leading to activate Wnt responsive genes. Involved in the regulation of cell adhesion. The majority of beta-catenin is localized to the cell membrane and is part of E-cadherin/catenin adhesion complexes which are proposed to couple cadherins to the actin cytoskeleton.

Synonyms:

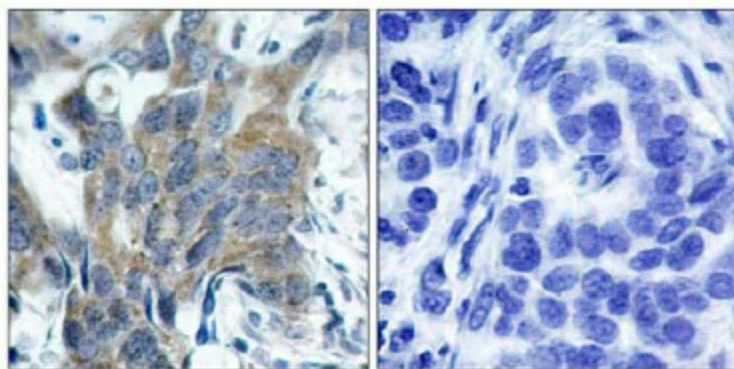
CTNNB1, CTNNB, Beta-catenin

Product images:


Western Blot analysis of extracts from MCF-7 cells untreated or treated with Calyculin A using beta-Catenin (pSer33) antibody



Western blot analysis of extracts from SW 626 cells, untreated or treated with Calyculin A (50nM, 30min), using β-Catenin (pSer33) antibody (Lane 3 and 4).



P-Peptide

-

+

Immunohistochemical analysis of paraffin-embedded human breast carcinoma tissue, using β -Catenin antibody.