

## Product datasheet for **AP02475PU-S**

### **PYK2 (PTK2B) pTyr402 Rabbit Polyclonal Antibody**

#### **Product data:**

<b>Product Type:</b>	Primary Antibodies
<b>Applications:</b>	IF, IHC, WB
<b>Recommended Dilution:</b>	Western Blot: 1/500-1/1000. Immunofluorescence: 1/100-1/200. Immunohistochemistry on Paraffin-Embedded Sections: 1/50-1/100.
<b>Reactivity:</b>	Human, Mouse, Rat
<b>Host:</b>	Rabbit
<b>Clonality:</b>	Polyclonal
<b>Immunogen:</b>	The antiserum was produced against synthesized phosphopeptide derived from human Pyk2 around the phosphorylation site of tyrosine 402 (D-I-YP-A-E).
<b>Specificity:</b>	This antibody detects endogenous levels of Pyk2 only when phosphorylated at Tyrosine 402.
<b>Formulation:</b>	PBS (without Mg <sup>2+</sup> and Ca <sup>2+</sup> ), pH 7.4, 150 mM NaCl, 0.02% Sodium Azide and 50% Glycerol. State: Aff - Purified State: Liquid purified Ig fraction.
<b>Concentration:</b>	lot specific
<b>Purification:</b>	Immunoaffinity Chromatography using epitope-specific phosphopeptide.
<b>Conjugation:</b>	Unconjugated
<b>Storage:</b>	Store the antibody (in aliquots) at -20°C. Avoid repeated freezing and thawing.
<b>Stability:</b>	Shelf life: One year from despatch.
<b>Gene Name:</b>	protein tyrosine kinase 2 beta
<b>Database Link:</b>	<a href="#">Entrez Gene 2185 Human Q14289</a>



[View online »](#)

**Background:**

PYK2 is involved in calcium induced regulation of ion channel and activation of the map kinase signaling pathway. PKY2 may represent an important signaling intermediate between neuropeptide activated receptors or neurotransmitters that increase calcium flux and the downstream signals that regulate neuronal activity. Interacts with the SH2 domain of Grb2. May phosphorylate the voltage-gated potassium channel protein Kv1.2. PYK2 activation is highly correlated with the stimulation of c-Jun N-terminal kinase activity.

**Synonyms:**

PYK2, RAFTK, Protein tyrosine kinase 2 beta, Focal adhesion kinase 2, CAK-beta, CADTK

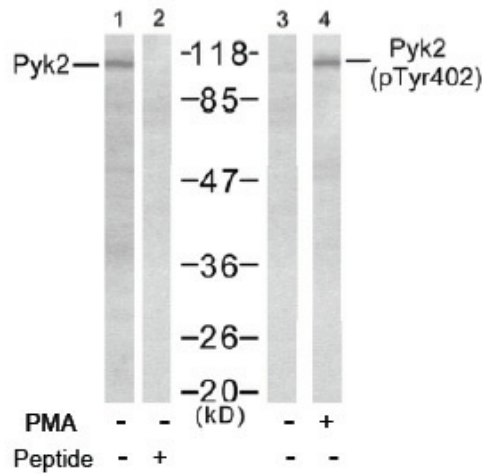
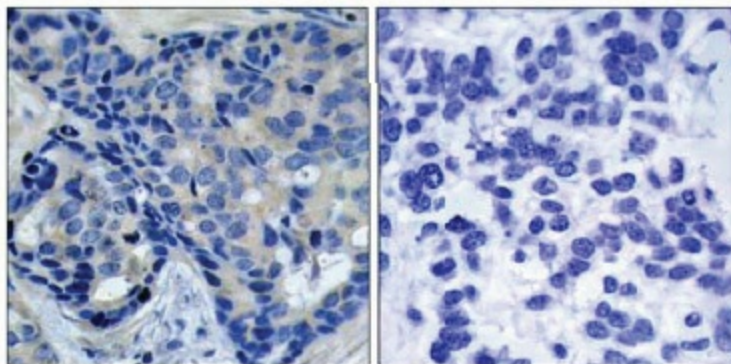
**Product images:**


Figure 2. Western blot analysis of extract from Jurkat cells, untreated or treated with PMA (1ng/ml, 5min), using Pyk2 antibody (Lane 1 and 2) and Pyk2 pTyr402 antibody (Lane 3 and 4).



P-Peptide                      -                      +

Figure 1. Immunohistochemical analysis of paraffin-embedded human breast carcinoma tissue, using Pyk2 pTyr402 antibody.

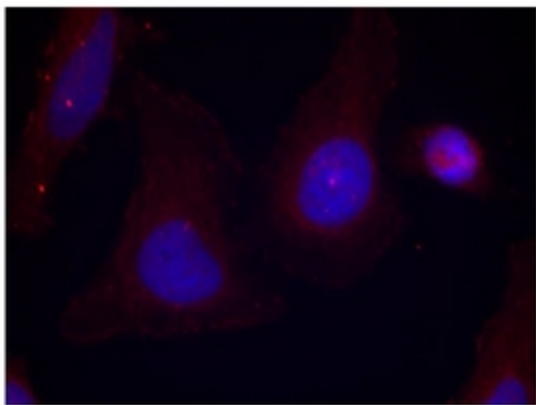


Figure 3. Immunofluorescence staining of methanol-fixed HeLa cells using Pyk2 pTyr402 antibody (Red).