

## Product datasheet for **AP02471PU-N**

### MEK1 (MAP2K1) pSer217/221 Rabbit Polyclonal Antibody

#### Product data:

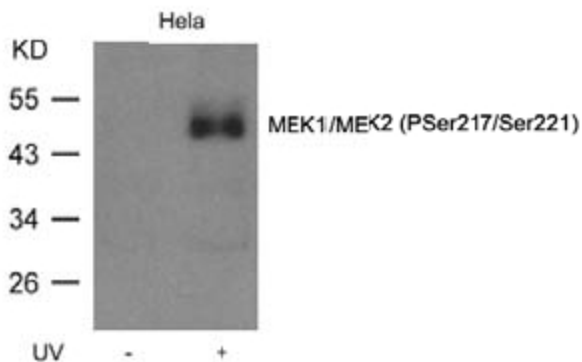
Product Type:	Primary Antibodies
Applications:	IHC, WB
Recommended Dilution:	<b>Western Blot:</b> 1/500-1/1000. Incubate membrane with diluted antibody in 5% nonfat milk, 1X TBS, 0,1% Tween-20 at 4°C with gentle shaking, overnight. <b>Immunohistochemistry on Paraffin Sections:</b> 1/50-1/100.
Reactivity:	Human, Mouse, Rat
Host:	Rabbit
Clonality:	Polyclonal
Immunogen:	Peptide sequence around the phosphorylation site of Serine 217/221 (I-D- <del>S</del> -M-A) derived from Human MEK1/MEK2
Specificity:	This antibody detects endogenous levels of MEK1/MEK2 only when phosphorylated at Serine 217/221.
Formulation:	PBS (without Mg <sup>2+</sup> and Ca <sup>2+</sup> ), pH 7.4, containing 150 mM NaCl and 50% Glycerol State: Aff - Purified State: Liquid purified IgG fraction Preservative: 0.02% Sodium Azide
Concentration:	lot specific
Purification:	Affinity Chromatography using epitope-specific phosphopeptide. The antibody against non-phosphopeptide was removed by chromatography using non-phosphopeptide corresponding to the phosphorylation site.
Conjugation:	Unconjugated
Storage:	Upon receipt, store undiluted (in aliquots) at -20°C. Avoid repeated freezing and thawing.
Stability:	Shelf life: one year from despatch.
Predicted Protein Size:	45 kDa
Gene Name:	mitogen-activated protein kinase kinase 1
Database Link:	<a href="#">Entrez Gene 5604 Human Q02750</a>



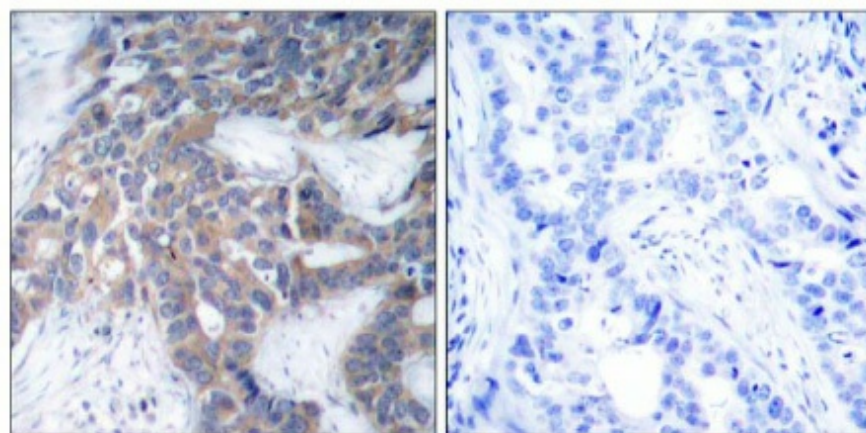
[View online »](#)

**Synonyms:**

MAPKK1, ERK activator kinase 1, ERK activator kinase 2, MAPK/ERK kinase 1, MAPK/ERK kinase 2, MEK1, MEK2, PRKMK1, PRKMK2, MAP kinase kinase 1, MAP kinase kinase 2

**Product images:**


Western Blot analysis of extracts from HeLa cells untreated or treated with UV using MEK1/MEK2 antibody (pSer217/221)



P-Peptide

-

+

Immunohistochemical analysis of paraffin-embedded human breast carcinoma tissue, using MEK1/MEK2 Antibody (pSer217/221) (left) or the same antibody preincubated with Blocking peptide (right)