

Product datasheet for **AP02467PU-N**

SMC1 (SMC1A) pSer957 Rabbit Polyclonal Antibody

Product data:

Product Type:	Primary Antibodies
Applications:	IHC, WB
Recommended Dilution:	Suitable for use in Western blot (1:500-1:1000) and Immunohistochemistry on paraffin-embedded sections (1:50-1:100).
Reactivity:	Human, Mouse
Host:	Rabbit
Clonality:	Polyclonal
Immunogen:	The antiserum was produced against synthesized phosphopeptide derived from human SMC1 around the phosphorylation site of serine 957 (G-S- <i>Sp</i> -Q-G).
Specificity:	The antibody was affinity-purified from rabbit antiserum by affinity-chromatography using epitope-specific phosphopeptide. The antibody against non-phosphopeptide was removed by chromatography using non-phosphopeptide corresponding to the phosphorylation site. SMC1 (phospho-Ser957) antibody detects endogenous levels of SMC1 only when phosphorylated at serine 957.
Formulation:	PBS (without Mg ²⁺ and Ca ²⁺), pH 7.4, 150 mM NaCl, 0.02% Sodium Azide and 50% Glycerol. State: Aff - Purified State: Liquid purified Ig fraction.
Concentration:	lot specific
Purification:	Immunoaffinity chromatography using epitope-specific phosphopeptide.
Conjugation:	Unconjugated
Storage:	Store the antibody (in aliquots) at -20°C. Avoid repeated freezing and thawing.
Stability:	Shelf life: One year from despatch.
Gene Name:	structural maintenance of chromosomes 1A
Database Link:	Entrez Gene 8243 Human Q14683
Synonyms:	SMC protein 1A, SMC-1A, SMC-1-alpha, SMC1L1, DXS423E



[View online »](#)

Product images:

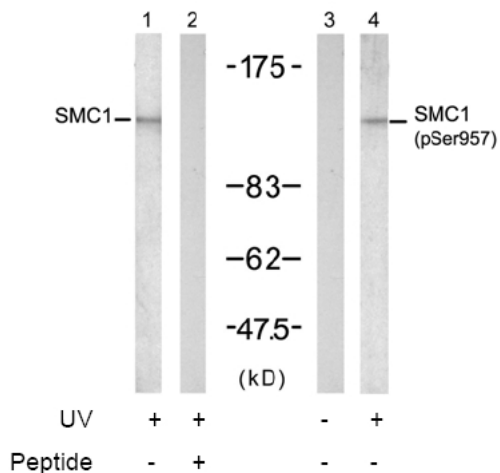
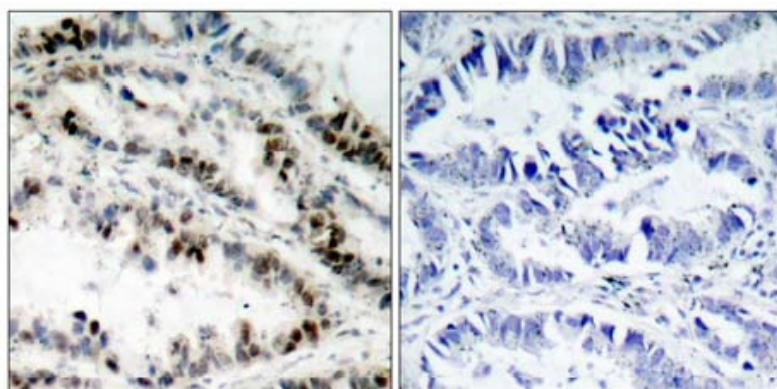


Figure 2. Western blot analysis of extract from K562 cells, untreated or treated with UV (20 min), using SMC1 antibody (Lane 1 and 2) and SMC1 (phospho-Ser957) antibody (Lane 3 and 4).



P-Peptide - +

Figure 1. Immunohistochemical analysis of paraffin-embedded human lung carcinoma tissue using SMC1 (phospho-Ser957) antibody.