

Product datasheet for **AP02458PU-N**

alpha Adducin (ADD1) pSer726 Rabbit Polyclonal Antibody

Product data:

| | |
|-----------------------|--|
| Product Type: | Primary Antibodies |
| Applications: | IF, IHC, WB |
| Recommended Dilution: | Western Blot: 1/500-1/1000. Immunofluorescence: 1/100-1/200. Immunohistochemistry on Paraffin-Embedded Sections: 1/50-1/100. |
| Reactivity: | Human, Mouse, Rat |
| Host: | Rabbit |
| Clonality: | Polyclonal |
| Immunogen: | The antiserum was produced against synthesized phosphopeptide derived from human ADD1 around the phosphorylation site of serine 726 (T-P- <i>Sp</i> -F-L). |
| Specificity: | This antibody detects endogenous levels of ADD1 only when phosphorylated at Serine 726. |
| Formulation: | PBS (without Mg ²⁺ and Ca ²⁺), pH 7.4, 150 mM NaCl, 0.02% Sodium Azide and 50% Glycerol. State: Aff - Purified State: Liquid purified Ig fraction. |
| Concentration: | lot specific |
| Purification: | Immunoaffinity Chromatography using epitope-specific phosphopeptide. The antibody against non-phosphopeptide was removed by chromatography using non-phosphopeptide corresponding to the phosphorylation site. |
| Conjugation: | Unconjugated |
| Storage: | Store the antibody (in aliquots) at -20°C. Avoid repeated freezing and thawing. |
| Stability: | Shelf life: One year from despatch. |
| Gene Name: | adducin 1 |
| Database Link: | Entrez Gene 118 Human P35611 |



[View online »](#)

Background:

Alpha adducin is a 80-120 kD member of the aldolase class II family and adducin subfamily. This protein has three isoforms that interact as heterodimers alpha/beta, and beta/gamma. The molecular weights for the various isoforms alpha=120 kD, beta=110kD; gamma=80kD. The alpha adducin protein is a ubiquitously expressed cytoskeletal protein that binds with high affinity to Ca²⁺/calmodulin and acts as a substrate for protein kinases A and C. This protein has been reported to promote the assembly of the spectrinactin network. Polymorphisms in alpha adducin are associated with cardiovascular disease and hypertension. Alpha adducin has been reported to interact with calmodulin. When phosphorylated by Rho-kinase, alpha adducin can regulate membrane ruffling and cell motility.

Synonyms:

ADDA

Product images:

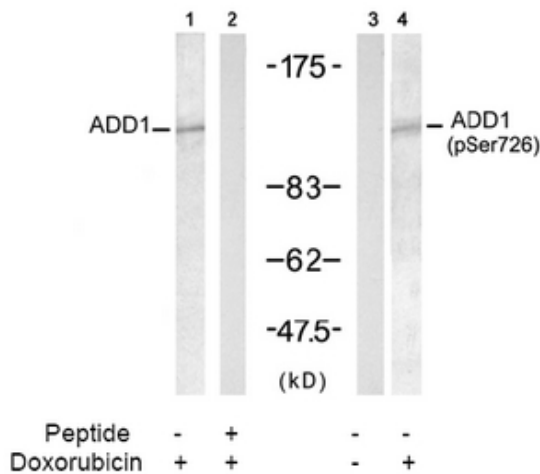
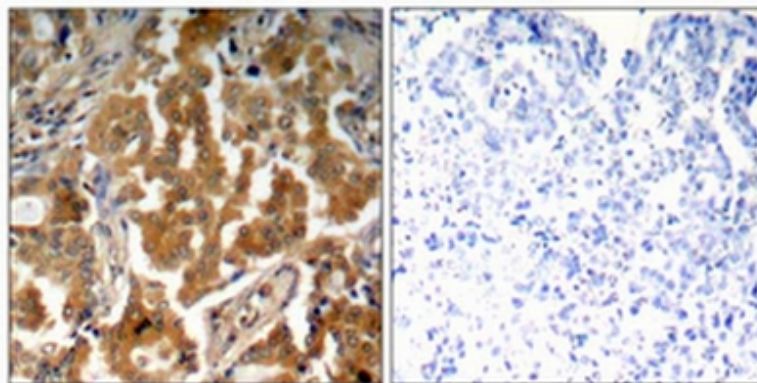


Figure 2. Western blot analysis of extract from HT-29 cells untreated or treated with Doxorubicin (1 mM, 30 min), using ADD1 antibody (Lane 1 and 2) and ADD1 (Phospho-Ser726) antibody ((Lane 3 and 4).



P-Peptide - +

Figure 1. Immunohistochemical analysis of paraffin- embedded human lung carcinoma tissue using ADD1 (Phospho-Ser726) antibody

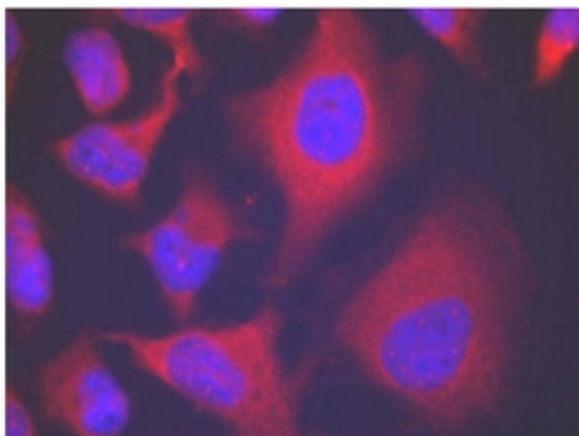


Figure 3. Immunofluorescence staining of methanol-fixed HeLa cells using ADD1 (Phospho-Ser726)antibody (Red).