

## Product datasheet for **AP02457PU-S**

### 14-3-3 zeta (YWHAZ) pSer58 Rabbit Polyclonal Antibody

#### Product data:

Product Type:	Primary Antibodies
Applications:	IF, IHC, WB
Recommended Dilution:	<b>Western blot:</b> 1/500-1/1000. Note: Incubate membrane with diluted antibody in 5% nonfat milk, 1xTBS, 0.1% Tween-20 at 4°C with gentle shaking, overnight. <b>Immunofluorescence:</b> 1/100-1/200. <b>Immunohistochemistry on Paraffin-Embedded Sections:</b> 1/50-1/100.
Reactivity:	Human, Mouse, Rat
Host:	Rabbit
Clonality:	Polyclonal
Immunogen:	Peptide Sequence around the phosphorylation site of Serine 58 (R-S- <del>S</del> -W-R) derived from Human 14-3-3 zeta.
Specificity:	This antibody detects endogenous levels of 14-3-3 zeta only when phosphorylated at Serine 58.
Formulation:	PBS (without Mg <sup>2+</sup> and Ca <sup>2+</sup> ), pH 7.4, 150 mM NaCl, 0.02% Sodium Azide and 50% Glycerol. State: Aff - Purified State: Liquid purified IgG fraction.
Concentration:	lot specific
Purification:	Immunoaffinity Chromatography using epitope-specific phosphopeptide.
Conjugation:	Unconjugated
Storage:	Store the antibody (in aliquots) at -20°C. Avoid repeated freezing and thawing.
Stability:	Shelf life: One year from despatch.
Gene Name:	tyrosine 3-monooxygenase/tryptophan 5-monooxygenase activation protein zeta
Database Link:	<a href="#">Entrez Gene 7534 Human P63104</a>
Synonyms:	YWHAZ, KCIP-1
Note:	Molecular Weight: 28 kDa



[View online »](#)

Product images:

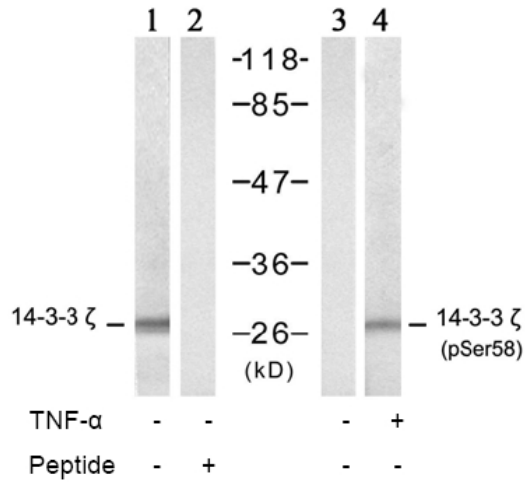


Figure 2. Western blot analysis of extract from NIH/3T3 cells, untreated or treated with TNF-alpha (20 ng/ml, 5min), using 14-3-3 zeta antibody (lane 1 and 2) and 14-3-3 zeta (Phospho-Ser58) antibody (lane 3 and 4).

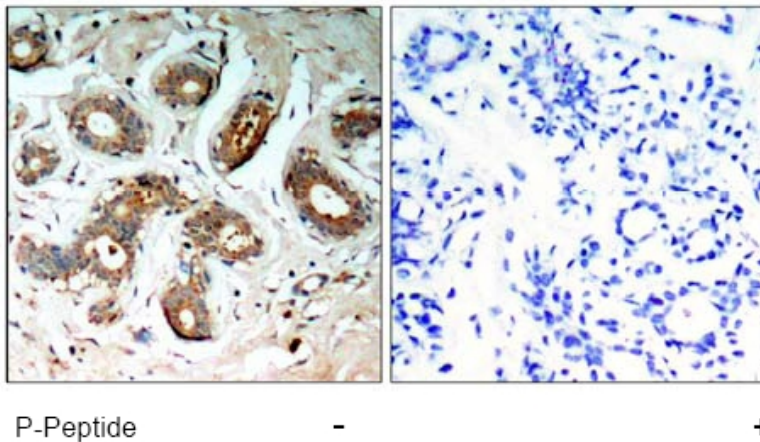


Figure 1. Immunohistochemical analysis of paraffin-embedded human breast carcinoma tissue, using 14-3-3 zeta (Phospho-Ser58) antibody.

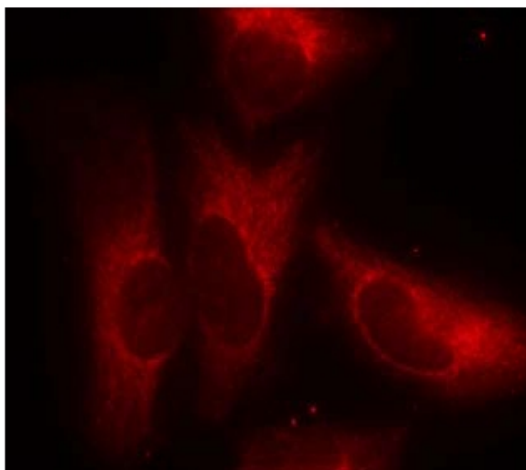


Figure 3. Immunofluorescence staining of methanol-fixed HeLa cells using using 14-3-3 zeta (Phospho-Ser58) antibody.