

Product datasheet for **AP02454PU-S**

MEK4 (MAP2K4) pSer80 Rabbit Polyclonal Antibody

Product data:

Product Type:	Primary Antibodies
Applications:	IF, IHC, WB
Recommended Dilution:	Western Blot: 1/500-1/1000. Immunofluorescence: 1/100-1/200. Immunohistochemistry on Paraffin-Embedded Sections: 1/50-1/100.
Reactivity:	Human, Mouse, Rat
Host:	Rabbit
Clonality:	Polyclonal
Immunogen:	The antiserum was produced against synthesized phosphopeptide derived from human SEK1/MKK4 around the phosphorylation site of serine 80 (T-H-Sp-I-E).
Specificity:	SEK1/MKK4 (phospho-Ser80) antibody detects endogenous levels of SEK1/MKK4 only when phosphorylated at Serine 80.
Formulation:	PBS (without Mg ²⁺ and Ca ²⁺), pH 7.4, 150 mM NaCl, 0.02% Sodium Azide and 50% Glycerol. State: Aff - Purified State: Liquid purified Ig fraction.
Concentration:	lot specific
Purification:	Affinity Chromatography using epitope-specific phosphopeptide. The antibody against non-phosphopeptide was removed by chromatography using non-phosphopeptide corresponding to the phosphorylation site.
Conjugation:	Unconjugated
Storage:	Store the antibody (in aliquots) at -20°C. Avoid repeated freezing and thawing.
Stability:	Shelf life: One year from despatch.
Gene Name:	mitogen-activated protein kinase kinase 4
Database Link:	Entrez Gene 6416 Human P45985



[View online »](#)

Background:

MEK4 is a dual specificity protein kinase that belongs to the Ser/Thr protein kinase family. This kinase is a direct activator of MAP kinases in response to various environmental stresses or mitogenic stimuli. It has been shown to activate MAPK8 / JNK1, MAPK9 / JNK2, and MAPK14 / p38, but not MAPK1 / ERK2 or MAPK3 / ERK3. This kinase is phosphorylated, and thus activated by MAP3K1 / MEKK. The knockout studies in mice suggested the roles of this kinase in mediating survival signal in T cell development, as well as in the organogenesis of liver.

Synonyms:

JNK-activating kinase 1, MAP Kinase Kinase 4, SAPK/ERK kinase 1, PRKMK4, SERK1, MEK-4, MAPKK4, MKK4

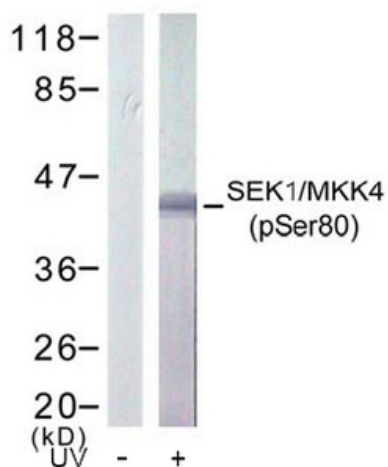
Product images:


Figure 2. Western blot analysis of extract from 293 cells treated or untreated with UV, using SEK1/ MKK4 (phospho-Ser80) antibody.

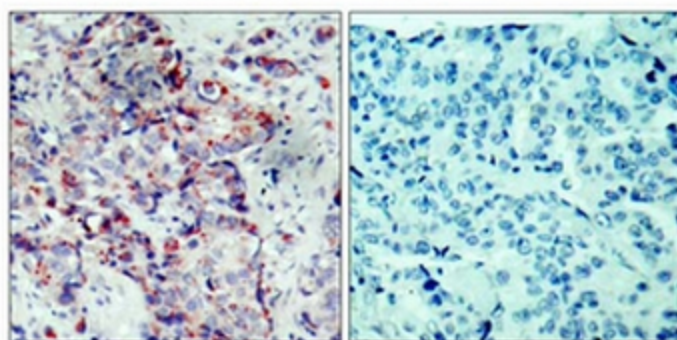


Figure 1. Immunohistochemical analysis of paraffin-embedded human breast carcinoma tissue, using SEK1/MKK4 (phospho-Ser80) antibody.

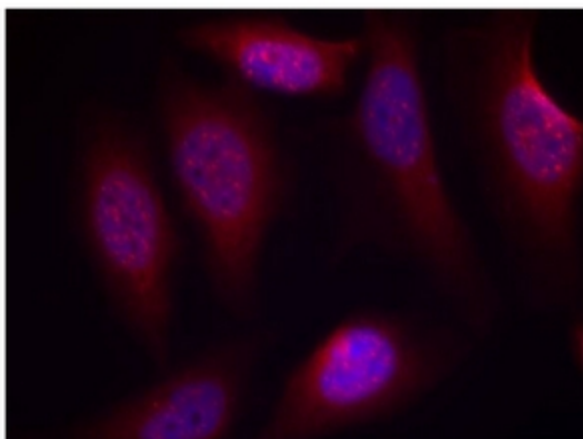


Figure 3. Immunofluorescence staining of methanol-fixed HeLa cells using SEK1/MKK4 (phospho-Ser80) antibody (Red).