

Product datasheet for **AP02452PU-N**

PLCG 2 (PLCG2) pTyr753 Rabbit Polyclonal Antibody

Product data:

Product Type:	Primary Antibodies
Applications:	IF, WB
Recommended Dilution:	Western Blot: 1/500-1/1000. Immunofluorescence: 1/100-1/200.
Reactivity:	Human, Mouse, Rat
Host:	Rabbit
Clonality:	Polyclonal
Immunogen:	The antiserum was produced against synthesized phosphopeptide derived from Human PLCG2 around the phosphorylation site of tyrosine 753 (S-L-Yp-D-V).
Specificity:	AP02452PU antibody detects endogenous levels of PLC-gamma 2 only when phosphorylated at Tyrosine 753.
Formulation:	PBS (without Mg ²⁺ and Ca ²⁺), pH 7.4, 150 mM NaCl, 0.02% Sodium Azide and 50% Glycerol. State: Aff - Purified State: Liquid purified Ig fraction.
Concentration:	lot specific
Purification:	Affinity-chromatography using epitope-specific phosphopeptide. The antibody against non-phosphopeptide was removed by chromatography using non-phosphopeptide corresponding to the phosphorylation site.
Conjugation:	Unconjugated
Storage:	Store the antibody (in aliquots) at -20°C. Avoid repeated freezing and thawing.
Stability:	Shelf life: One year from despatch.
Gene Name:	phospholipase C gamma 2
Database Link:	Entrez Gene 5336 Human P16885



[View online »](#)

Background: PLC (Phosphoinositide-specific phospholipase C) plays a significant role in transmembrane signaling. Four members of PLCs have been identified: PLC β , PLC γ , PLC δ , and PLC ϵ . In response to extracellular stimuli (e.g., hormone, growth factors, neurotransmitters), PLC hydrolyzes phosphatidylinositol 4,5-bisphosphate (PIP₂) into two secondary messengers: inositol 1,4,5-triphosphate (IP₃) and diacylglycerol (DAG). PLC γ 2 is engaged in antigen-dependent signaling in B-cells and collagen-dependent signaling in platelets.

Synonyms: Phospholipase C-gamma-2, PLC-gamma-2, Phospholipase C-IV, PLC-IV

Note: Molecular Weight: 150 kDa

Product images:

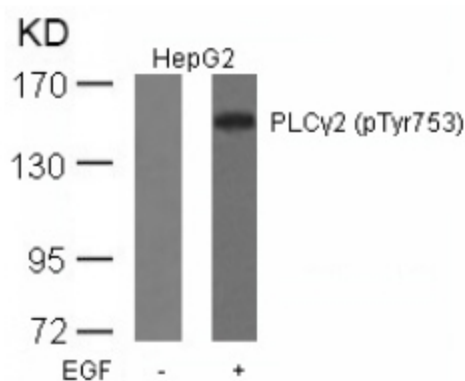


Figure 2. Western blot analysis of extract from HepG2 cells untreated or treated with EGF using PLC γ 2 antibody (phospho-Tyr753).

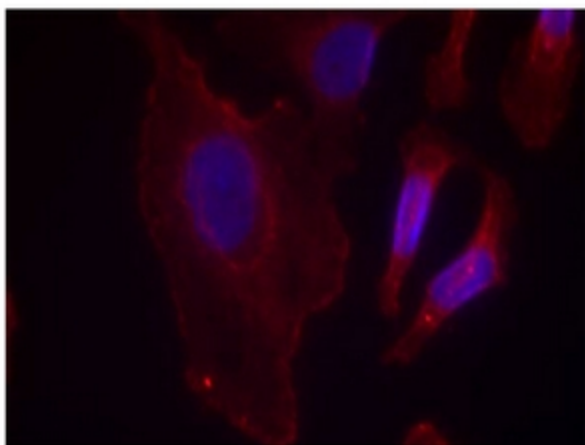


Figure 1. Immunofluorescence staining of methanol-fixed HeLa cells using PLC γ 2 antibody (phospho-Tyr753).