

## Product datasheet for **AP02450PU-N**

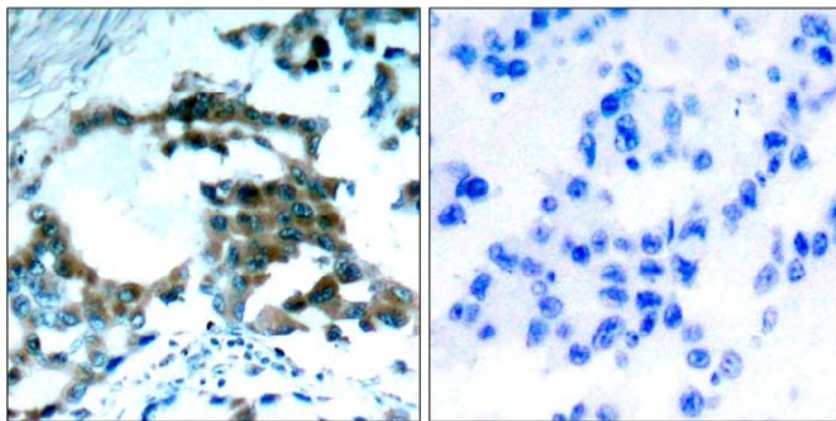
### PKC theta (PRKCQ) pSer695 Rabbit Polyclonal Antibody

#### Product data:

Product Type:	Primary Antibodies
Applications:	IHC
Recommended Dilution:	Suitable for use in Suitable for use in Immunohistochemistry on paraffin-embedded sections (1:50-1:100).
Reactivity:	Human, Mouse
Host:	Rabbit
Clonality:	Polyclonal
Immunogen:	The antiserum was produced against synthesized phosphopeptide derived from human PKC $\theta$ around the phosphorylation site of serine 695 (N-F-SP-F-M).
Specificity:	PKC $\theta$ (phospho-Ser695) antibody detects endogenous levels of PKC $\theta$ only when phosphorylated at serine 695.
Formulation:	PBS (without Mg <sup>2+</sup> and Ca <sup>2+</sup> ), pH 7.4, 150 mM NaCl, 0.02% Sodium Azide and 50% Glycerol. State: Aff - Purified State: Liquid purified Ig fraction.
Concentration:	lot specific
Purification:	Immunoaffinity chromatography using epitope-specific phosphopeptide.
Conjugation:	Unconjugated
Storage:	Store the antibody (in aliquots) at -20°C. Avoid repeated freezing and thawing.
Stability:	Shelf life: One year from despatch.
Gene Name:	protein kinase C theta
Database Link:	<a href="#">Entrez Gene 5588 Human Q04759</a>
Synonyms:	PKC theta, PKC-theta, nPKC-theta, Protein kinase C theta type



[View online »](#)

**Product images:**

P-Peptide

-

+

Figure 1. Immunohistochemical analysis of paraffin-embedded human lung carcinoma tissue, using PKC $\theta$ , (phospho-Ser695) antibody.