

## Product datasheet for **AP02447PU-N**

### PAK1 pThr423/402/421 Rabbit Polyclonal Antibody

#### Product data:

Product Type:	Primary Antibodies
Applications:	IF, IHC
Recommended Dilution:	Immunofluorescence: 1/100-1/200. Immunohistochemistry on Paraffin-Embedded Sections: 1/50-1/100.
Reactivity:	Human, Mouse, Rat
Host:	Rabbit
Clonality:	Polyclonal
Immunogen:	The antiserum was produced against synthesized phosphopeptide derived from human PAK1 around the phosphorylation site of threonine 423 (R-S-TP-M-V).
Specificity:	This antibody detects endogenous levels of PAK1/PAK2/PAK3 only when phosphorylated at Threonine 423/402/421.
Formulation:	PBS (without Mg <sup>2+</sup> and Ca <sup>2+</sup> ), pH 7.4, 150 mM NaCl, 0.02% Sodium Azide and 50% Glycerol. State: Aff - Purified State: Liquid purified Ig fraction.
Concentration:	lot specific
Purification:	Affinity-chromatography using epitope-specific phosphopeptide. The antibody against non-phosphopeptide was removed by chromatography using non-phosphopeptide corresponding to the phosphorylation site.
Conjugation:	Unconjugated
Storage:	Store undiluted at 2-8°C for one month or (in aliquots) at -20°C for longer. Avoid repeated freezing and thawing.
Stability:	Shelf life: one year from despatch.
Gene Name:	p21 (RAC1) activated kinase 1
Database Link:	<a href="#">Entrez Gene 18479 Mouse</a> <a href="#">Entrez Gene 29431 Rat</a> <a href="#">Entrez Gene 5058 Human Q13153</a>
Synonyms:	PAK 1, PAK-1, Alpha-PAK, PAK alpha, p21-activated kinase 1, p65-PAK, PAK 2, PAK-2, Gamma-PAK, PAK gamma, PAK65, p21-activated kinase 2, p58, PAK 3, PAK-3, Beta-PAK, PAK beta, p21-activated kinase 3, Oligophrenin-3, OPHN3

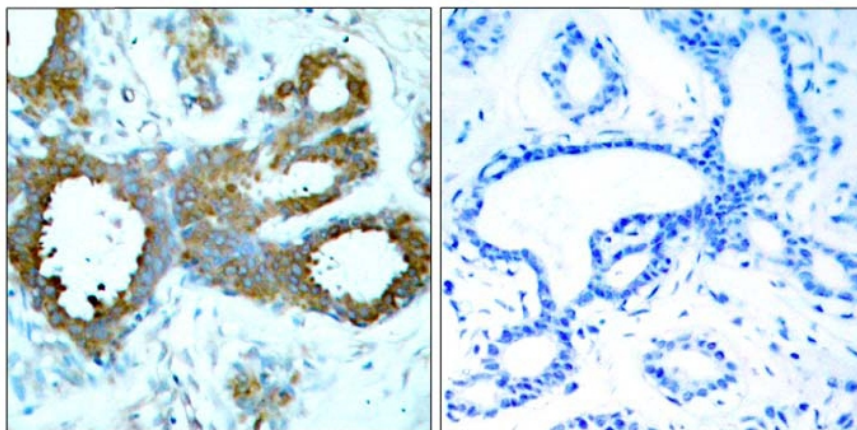


[View online »](#)

**Protein Families:** Druggable Genome, Protein Kinase, Stem cell - Pluripotency

**Protein Pathways:** Axon guidance, Chemokine signaling pathway, Epithelial cell signaling in Helicobacter pylori infection, ErbB signaling pathway, Fc gamma R-mediated phagocytosis, Focal adhesion, MAPK signaling pathway, Natural killer cell mediated cytotoxicity, Regulation of actin cytoskeleton, Renal cell carcinoma, T cell receptor signaling pathway

**Product images:**



P-Peptide

-

+

Figure 1. Immunohistochemical analysis of paraffin-embedded human breast carcinoma tissue, using PAK1/PAK2/PAK3 (Phospho-Thr423/Thr402/Thr421) antibody.

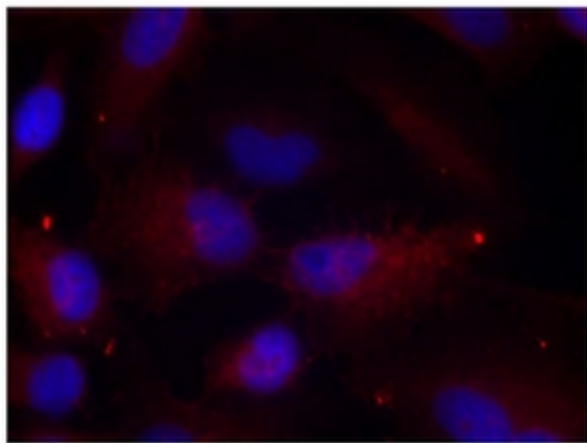


Figure 2. Immunofluorescence staining of methanol-fixed HeLa cells using PAK1/PAK2/PAK3 (Phospho-Thr423/Thr402/Thr421) antibody (Red).