

Product datasheet for **AP02446PU-S**

HSP27 (HSPB1) pSer15 Rabbit Polyclonal Antibody

Product data:

Product Type:	Primary Antibodies
Applications:	IHC, WB
Recommended Dilution:	Western blot: 1/500 - 1/1000. Immunohistochemistry on paraffin-embedded sections: 1/50 - 1/100. Immunofluorescence: 1/100 - 1/200.
Reactivity:	Human, Mouse
Host:	Rabbit
Clonality:	Polyclonal
Immunogen:	The antiserum was produced against synthesized phosphopeptide derived from human HSP27 around the phosphorylation site of serine15 (G-P-SP-W-D).
Specificity:	HSP27 (phospho-Ser15) antibody detects endogenous levels of HSP27 only when phosphorylated at serine 15.
Formulation:	PBS (without Mg ²⁺ and Ca ²⁺), pH 7.4, 150 mM NaCl, 0.02% Sodium Azide and 50% Glycerol. State: Aff - Purified State: Liquid purified Ig fraction
Concentration:	lot specific
Purification:	Immunoaffinity chromatography using epitope-specific phosphopeptide.
Conjugation:	Unconjugated
Storage:	Store the antibody (in aliquots) at -20°C. Avoid repeated freezing and thawing.
Stability:	Shelf life: One year from despatch.
Gene Name:	heat shock protein family B (small) member 1
Database Link:	Entrez Gene 3315 Human P04792



[View online »](#)

Background:

Hsp27, also referred to as the Estrogen regulated 24K protein and HSP28, is one of several small heat shock proteins (HSP) produced by all organisms studied. Hsp27 synthesis is induced by elevated temperature, as well as estrogen in hormone responsive cells. This protein is involved in stress resistance and actin organization. Interestingly, human HSP27 also shares greater than 50% homology with low molecular weight *Drosophila* HSP's and mammalian α -crystalline lens protein. Because of the estrogen responsive nature of Hsp27, this protein has been studied extensively in human estrogen responsive tissues such as cervix, endometrium and breast tissue. This work has led to the suggestion that Hsp27 may be a useful marker in classifying various hormone sensitive tumors.

Synonyms:

Heat shock protein beta-1, Heat shock 27 kDa protein, HSP28, 28 kDa heat shock protein, SRP27, HSP25

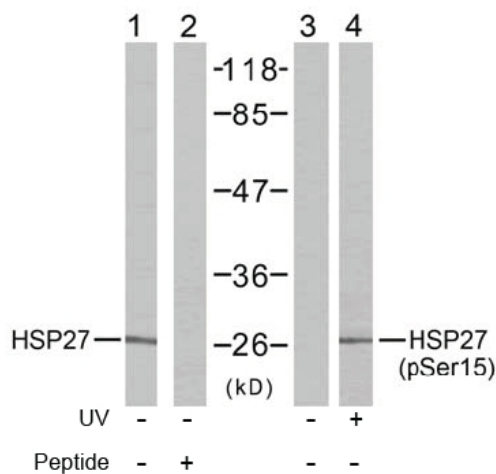
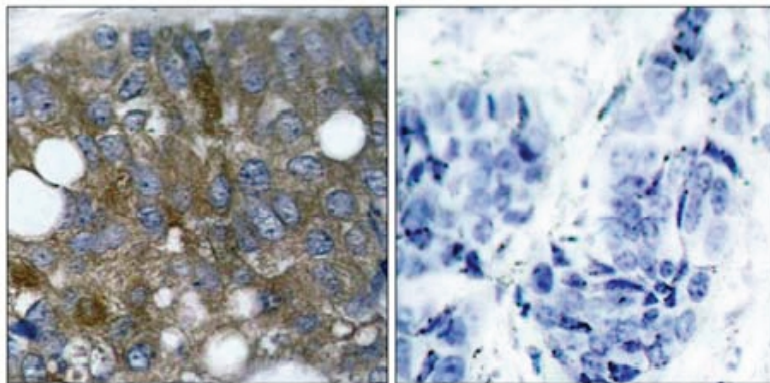
Product images:


Figure 2. Western blot analysis of extract from HeLa cells using HSP27 antibody (Lane 1 and 2) and HSP27 (phospho-Ser15) antibody (Lane 3 and 4).



P-Peptide - +

Figure 1. Immunohistochemical analysis of paraffin- embedded human breast carcinoma tissue using HSP27 (phospho-Ser15) antibody.