

Product datasheet for **AP02440PU-N**

VASP pSer239 Rabbit Polyclonal Antibody

Product data:

Product Type:	Primary Antibodies
Applications:	IHC, WB
Recommended Dilution:	Suitable for use in Western blot (1/500~1/1000) and Immunohistochemistry (1/50~1/100).
Reactivity:	Human, Mouse
Host:	Rabbit
Clonality:	Polyclonal
Immunogen:	The antiserum was produced against synthesized phosphopeptide derived from Human VASP around the phosphorylation site of Serine 239 (K-V-Sp-K-Q).
Specificity:	The antibody was affinity-purified from rabbit antiserum by Affinity Chromatography using epitope-specific phosphopeptide. The antibody against non-phosphopeptide was removed by chromatography using non-phosphopeptide corresponding to the phosphorylation site. VASP (phospho-Ser239) antibody detects endogenous levels of VASP only when phosphorylated at Serine 239.
Formulation:	PBS (without Mg ²⁺ and Ca ²⁺), pH 7.4, 150 mM NaCl, 0.02% Sodium Azide and 50% Glycerol. State: Aff - Purified State: Liquid purified Ig fraction.
Concentration:	lot specific
Purification:	Immunoaffinity Chromatography.
Conjugation:	Unconjugated
Storage:	Store the antibody (in aliquots) at -20°C. Avoid repeated freezing and thawing.
Stability:	Shelf life: One year from despatch.
Gene Name:	vasodilator-stimulated phosphoprotein
Database Link:	Entrez Gene 7408 Human P50552



[View online »](#)

Background:

Vasodilator-stimulated phosphoprotein (VASP) is a member of the Ena-VASP protein family. Ena-VASP family members contain an EHV1 N-terminal domain that binds proteins containing E/DFPPPPXD/E motifs and targets Ena-VASP proteins to focal adhesions. VASP may also be involved in the intracellular signaling pathways that regulate integrin-extracellular matrix interactions. VASP is regulated by the cyclic nucleotide-dependent kinases PKA and PKG.

Synonyms:

Vasodilator-stimulated phosphoprotein

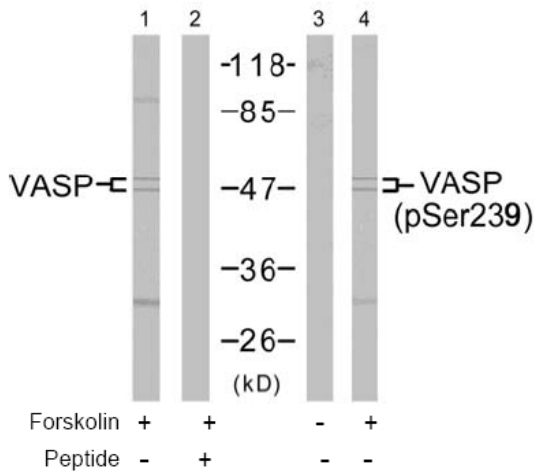
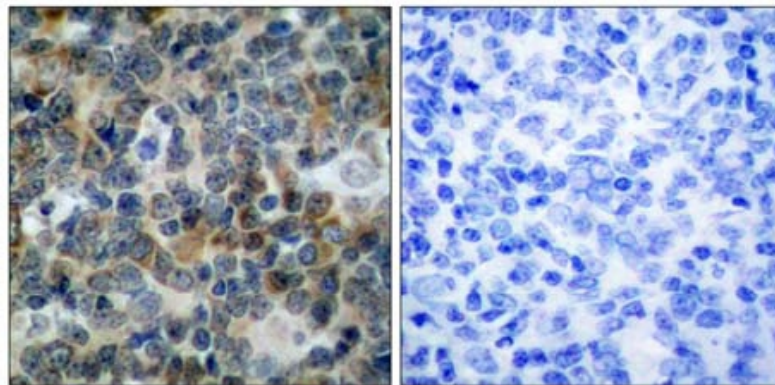
Product images:


Figure 2. Western blot analysis of extract from NIH/3T3 cells untreated or treated with forskolin (40 μ M, 30 min), using VASP antibody (Line 1 and 2) and VASP (phospho-Ser239) antibody (Line 3 and 4).



P-Peptide - +

Figure 1. Immunohistochemical analysis of paraffin-embedded human tonsil carcinoma tissue, using VASP (phospho-Ser239) antibody.