

Product datasheet for **AP02437PU-N**

SRC pTyr529 Rabbit Polyclonal Antibody

Product data:

Product Type:	Primary Antibodies
Applications:	IF, IHC, WB
Recommended Dilution:	Western Blot: 1/500-1/1000. Immunofluorescence: 1/100-1/200. Immunohistochemistry on Paraffin Sections: 1/50-1/100.
Reactivity:	Human
Host:	Rabbit
Clonality:	Polyclonal
Immunogen:	The antiserum was produced against synthesized phosphopeptide derived from human Src around the phosphorylation site of tyrosine 529 (P-Q-YP-Q-P).
Specificity:	The antibody detects endogenous levels of Src only when phosphorylated at Tyrosine 529.
Formulation:	PBS (without Mg ²⁺ and Ca ²⁺), pH 7.4, 150 mM NaCl, 0.02% Sodium Azide and 50% Glycerol. State: Aff - Purified State: Liquid purified Ig fraction.
Concentration:	lot specific
Purification:	Affinity Chromatography using epitope-specific phosphopeptide. The antibody against non-phosphopeptide was removed by chromatography using non-phosphopeptide corresponding to the phosphorylation site.
Conjugation:	Unconjugated
Storage:	Store the antibody (in aliquots) at -20°C. Avoid repeated freezing and thawing.
Stability:	Shelf life: One year from despatch.
Gene Name:	SRC proto-oncogene, non-receptor tyrosine kinase
Database Link:	Entrez Gene 6714 Human P12931
Synonyms:	c-Src, pp60c-src



[View online »](#)

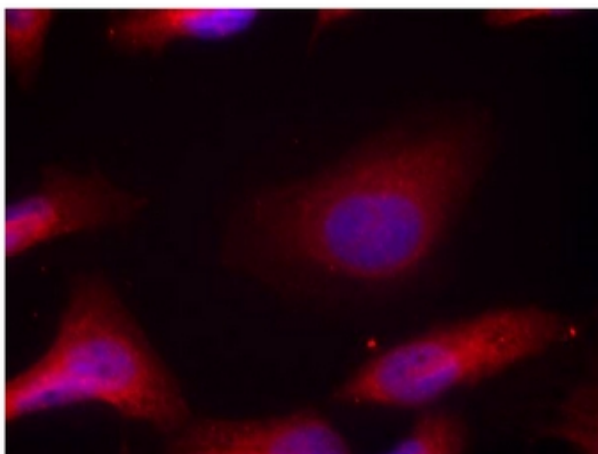


Figure 3. Immunofluorescence staining of methanol-fixed HeLa cells using Src (phospho-Tyr529) antibody (Red).