

Product datasheet for **AP02433PU-S**

JAK1 pTyr1022 Rabbit Polyclonal Antibody

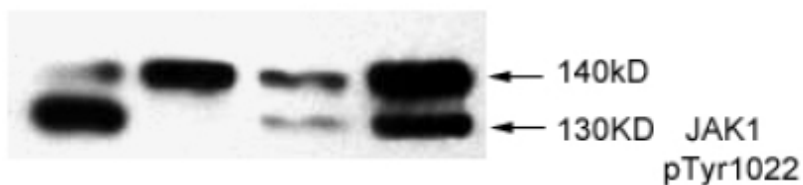
Product data:

Product Type:	Primary Antibodies
Applications:	IHC, WB
Recommended Dilution:	Western blot (1/500~1/1000). Immunohistochemistry (1/50~1/100).
Reactivity:	Human, Mouse, Rat
Host:	Rabbit
Clonality:	Polyclonal
Immunogen:	The antiserum was produced against synthesized phosphopeptide derived from Human JAK1 around the phosphorylation site of tyrosine 1022 (K-E-YP-Y-T).
Specificity:	The antibody was affinity-purified from rabbit antiserum by Affinity-Chromatography using epitope-specific phosphopeptide. The antibody against non-phosphopeptide was removed by chromatography using non-phosphopeptide corresponding to the phosphorylation site. This antibody detects endogenous levels of JAK1 only when phosphorylated at tyrosine 1022.
Formulation:	PBS (without Mg ²⁺ and Ca ²⁺), pH 7.4, 150 mM NaCl, 0.02% Sodium Azide and 50% Glycerol State: Aff - Purified State: Liquid purified IgG fraction
Concentration:	lot specific
Purification:	Affinity Chromatography
Conjugation:	Unconjugated
Storage:	Store undiluted at 2-8°C for one month or (in aliquots) at -20°C for longer. Avoid repeated freezing and thawing.
Stability:	Shelf life: one year from despatch.
Predicted Protein Size:	130 kDa (Predicted)
Gene Name:	Janus kinase 1
Database Link:	Entrez Gene 3716 Human P23458
Synonyms:	Janus kinase 1, JAK-1, JAK1A, JAK1B

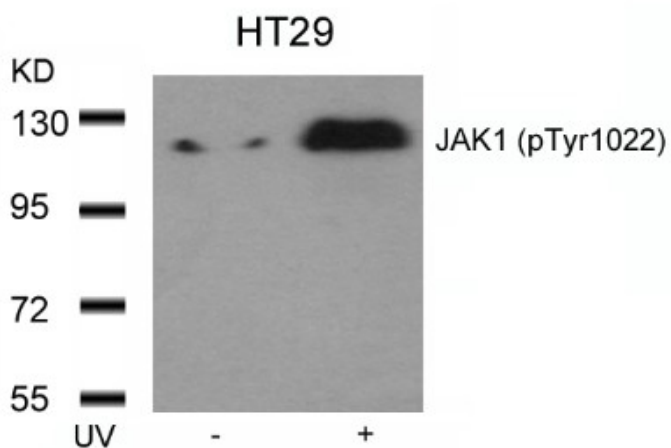


[View online »](#)

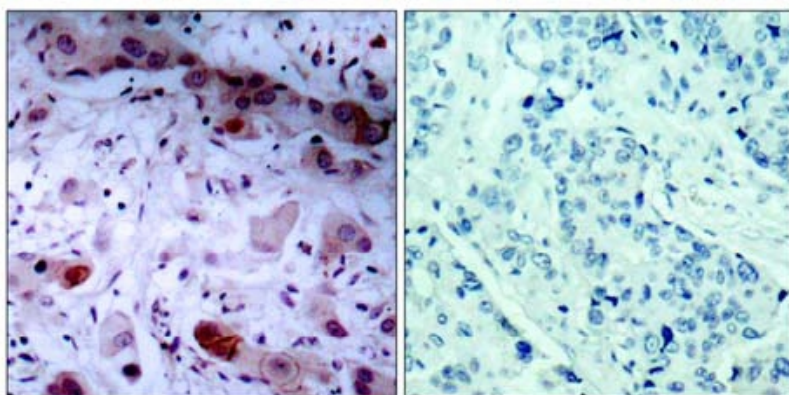
Product images:



Western blot analysis of extract from thyroid cancer cell line Bph cells, using JAK1 Antibody (Phospho-Tyr1022).



Western blot analysis of extracts from HT29 cells untreated or treated with UV using JAK1 Antibody (Phospho-Tyr1022).



Immunohistochemical analysis of paraffin-embedded human breast carcinoma tissue, using JAK1 Antibody (Phospho-Tyr1022).

P-Peptide - +