

Product datasheet for **AP02431PU-S**

MEK6 (MAP2K6) pSer207 Rabbit Polyclonal Antibody

Product data:

Product Type:	Primary Antibodies
Applications:	IF, IHC, WB
Recommended Dilution:	Western blot: 1/500-1/1000. Incubate membrane with diluted antibody in 5% nonfat milk, 1X TBS, 0,1% Tween-20 at 4°C with gentle shaking, overnight. Immunohistochemistry on Paraffin Sections: 1/50-1/100. Immunofluorescence: 1/100-1/200.
Reactivity:	Human, Rat
Host:	Rabbit
Clonality:	Polyclonal
Immunogen:	Synthetic phosphopeptide derived from Human MKK6 around the phosphorylation site of Serine 207 (V-D- <i>Sp</i> -V-A).
Specificity:	This antibody detects endogenous levels of MKK6 only when phosphorylated at serine207.
Formulation:	PBS (without Mg ²⁺ and Ca ²⁺), pH 7.4, 150 mM NaCl, 0.02% Sodium Azide and 50% Glycerol State: Aff - Purified State: Liquid purified Ig fraction
Concentration:	lot specific
Purification:	Immunoaffinity Chromatography using epitope-specific phosphopeptide. The antibody against non-phosphopeptide was removed by chromatography using non-phosphopeptide corresponding to the phosphorylation site.
Conjugation:	Unconjugated
Storage:	Store the antibody (in aliquots) at -20°C. Avoid repeated freezing and thawing.
Stability:	Shelf life: One year from despatch.
Gene Name:	mitogen-activated protein kinase kinase 6
Database Link:	Entrez Gene 5608 Human P52564



[View online »](#)

Background:

Mitogen activated protein kinase kinase 6 (MEK6 or MKK6) belongs to the serine/threonine protein kinase family and the MAPK kinase subfamily (MAP2K, MKK or MEKs). MEK6, closely related to MEK3, catalyzes the concomitant phosphorylation of a threonine and a tyrosine residue in MAP kinase p38, thus activating it, in response to inflammatory cytokines and environmental stress.

As an essential component of p38 MAP kinase mediated signal transduction pathway, this protein is involved in many cellular processes such as stress induced cell cycle arrest, transcription activation and apoptosis.

Synonyms:

MAPKK 6, MAPK/ERK kinase 6, SAPKK3, MEK6, MKK6, MAP kinase kinase 6

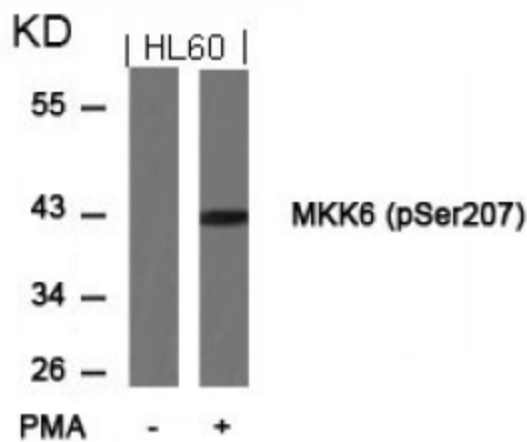
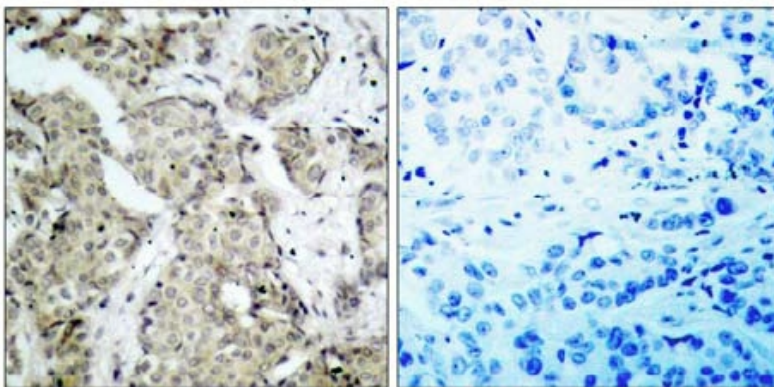
Product images:


Figure 3. Western blot analysis of extract from HL60 cells untreated or treated with PMA using MKK6 antibody (Lane 1 and 2) and MKK6 (phospho-Ser207) antibody



P-Peptide - +

Figure 1. Immunohistochemical analysis of Paraffin-Embedded Human breast carcinoma tissue, using MKK6 (phospho-Ser207) antibody and the same antibody preincubated blocking peptide.

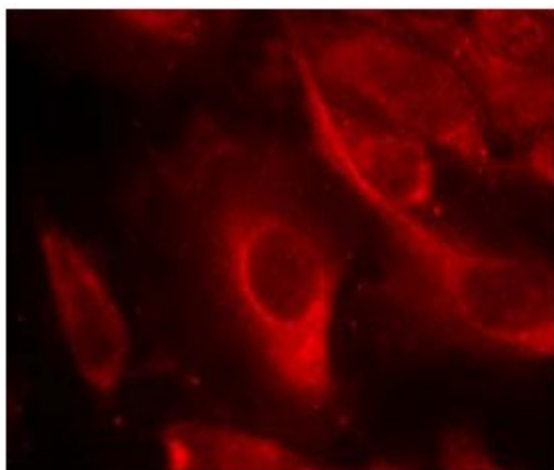


Figure 2. Immunofluorescence staining of methanol-fixed HeLa cells showing cytoplasmic staining using using MKK6 (phospho-Ser207) antibody