

## Product datasheet for **AP02423PU-S**

### FOXO1 pSer319 Rabbit Polyclonal Antibody

#### Product data:

Product Type:	Primary Antibodies
Applications:	IF, IHC, WB
Recommended Dilution:	Western Blot: 1/500-1/1000. Immunofluorescence: 1/100-1/200. Immunohistochemistry on Paraffin Sections: 1/50-1/100.
Reactivity:	Human, Mouse, Rat
Host:	Rabbit
Clonality:	Polyclonal
Immunogen:	The antiserum was produced against synthesized phosphopeptide derived from human FKHR around the phosphorylation site of Serine 319 (T-S-SP-N-A).
Specificity:	This antibody detects endogenous levels of FKHR only when phosphorylated at Serine 319.
Formulation:	PBS (without Mg <sup>2+</sup> and Ca <sup>2+</sup> ), pH 7.4, 150 mM NaCl, 0.02% Sodium Azide and 50% Glycerol. State: Aff - Purified State: Liquid purified Ig fraction.
Concentration:	lot specific
Purification:	Affinity Chromatography using epitope-specific phosphopeptide. The antibody against non-phosphopeptide was removed by chromatography using non-phosphopeptide corresponding to the phosphorylation site.
Conjugation:	Unconjugated
Storage:	Store the antibody (in aliquots) at -20°C. Avoid repeated freezing and thawing.
Stability:	Shelf life: One year from despatch.
Gene Name:	forkhead box O1
Database Link:	<a href="#">Entrez Gene 2308 Human Q12778</a>



[View online »](#)

**Background:**

FOXO1A (FKHR or ForkHead in Rhabdomyosarcoma) is a 70 kDa protein which is a member of a subfamily of the forkhead homeotic gene family of transcription factors. Recent studies have shown that this protein can act as either a coactivator or a corepressor of nuclear receptor activity. This action is mediated through the LXXLL motif found in the C terminus of the FOXO1A protein. The specific function of the gene has not yet been determined; however, it may play a role in myogenic growth and differentiation. Chromosomal aberrations involving FOXO1A are a cause of rhabdomyosarcoma 2 (RMS2); also known as alveolar rhabdomyosarcoma.

**Synonyms:**

Forkhead Box Protein O1, FOXO1, FKHR

**Note:**
**All Sites:**

Human: Ser319

Mouse: Ser316

Rat: Ser313

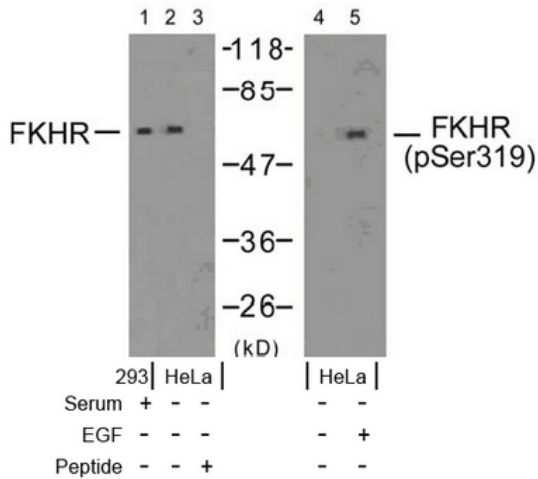
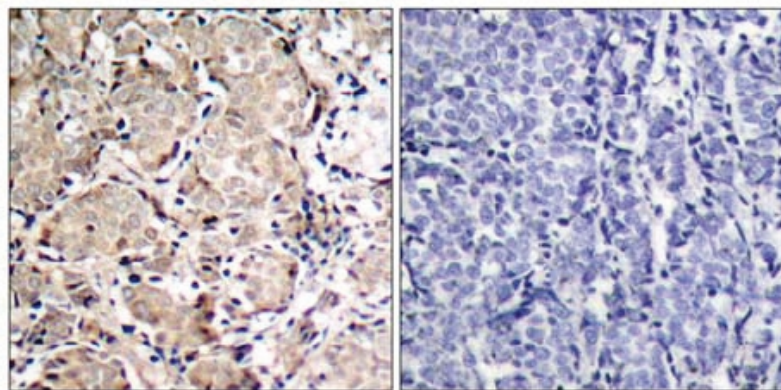
**Product images:**


Figure 2. Western blot analysis of extracts from 293 cells (10% serum-treated, 15 min) and HeLa cells (EGF-treated, 200 ng/ml, 15 min), using FKHR antibody (Lane 1, 2 and 3) and FKHR (phospho-Ser319) antibody (#, Lane 4 and 5).



P-Peptide

-

+

Figure 1. Immunohistochemical analysis of paraffin-embedded human breast carcinoma tissue using FKHR (phospho-Ser319) antibody.

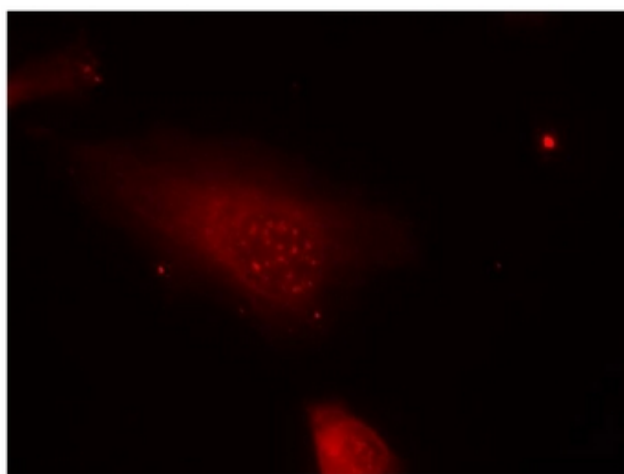


Figure 3. Immunofluorescence staining of methanol-fixed HeLa cells using FKHR (phospho-Ser319) antibody (Red).