

Product datasheet for **AP02421PU-S**

CDK2 pThr160 Rabbit Polyclonal Antibody

Product data:

Product Type:	Primary Antibodies
Applications:	IHC, WB
Recommended Dilution:	Suitable for use in Western blot (1:500~1:1000), ELISA (1:4000) and Immunohistochemistry (1:50~1:100).
Reactivity:	Human, Mouse
Host:	Rabbit
Clonality:	Polyclonal
Immunogen:	The antiserum was produced against synthesized phosphopeptide derived from human CDK2 around the phosphorylation site of threonine 160 (T-Y-TP-H-E).
Specificity:	The antibody was affinity-purified from rabbit antiserum by affinity-chromatography using epitope-specific phosphopeptide. The antibody against non-phosphopeptide was removed by chromatography using non-phosphopeptide corresponding to the phosphorylation site. CDK2 (phospho-Thr160) antibody detects endogenous levels of CDK2 only when phosphorylated at threonine 160.
Formulation:	PBS (without Mg ²⁺ and Ca ²⁺), pH 7.4, 150 mM NaCl, 0.02% Sodium Azide and 50% Glycerol. State: Aff - Purified State: Liquid purified Ig fraction.
Concentration:	lot specific
Purification:	Immunoaffinity chromatography.
Conjugation:	Unconjugated
Storage:	Store the antibody (in aliquots) at -20°C. Avoid repeated freezing and thawing.
Stability:	Shelf life: One year from despatch.
Gene Name:	cyclin-dependent kinase 2
Database Link:	Entrez Gene 1017 Human P24941



[View online »](#)

Background:

Cdk2 is a member of the Ser/Thr protein kinase family. It is highly similar to the gene products of *S. cerevisiae* cdc28, and *S. pombe* cdc2. It is a catalytic subunit of the cyclin-dependent protein kinase complex, whose activity is restricted to the G1-S phase, and is essential for cell cycle G1/S phase transition. This protein associates with and is regulated by the regulatory subunits of the complex including cyclin A or E, CDK inhibitor p21Cip1 (CDKN1A) and p27Kip1 (CDKN1B). Its activity is also regulated by protein phosphorylation. Two alternatively spliced variants and multiple transcription initiation sites of this gene have been reported.

Synonyms:

p33 protein kinase

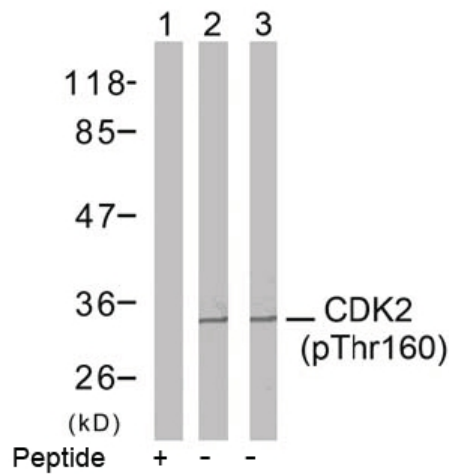
Product images:


Figure 2. Western blot analysis of extracts from A2780 cells (Lane 1 and 2) and MDA-MB-435 cells (Lane 3), using CDK2 (phospho-Thr160) antibody.

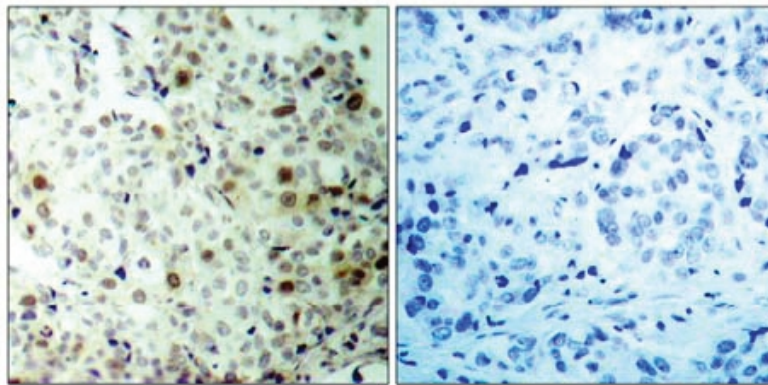


Figure 1. Immunohistochemical analysis of paraffin-embedded human breast carcinoma tissue, using CDK2 (phospho-Thr160) antibody.

P-Peptide - +