

Product datasheet for **AP02420PU-N**

Rb (RB1) pSer780 Rabbit Polyclonal Antibody

Product data:

Product Type:	Primary Antibodies
Applications:	IF, IHC, WB
Recommended Dilution:	Western Blot: 1/500-1/1000. Immunofluorescence: 1/100-1/200. Immunohistochemistry on Paraffin Sections: 1/50-1/100.
Reactivity:	Human, Mouse, Rat
Host:	Rabbit
Clonality:	Polyclonal
Immunogen:	The antiserum was produced against synthesized phosphopeptide derived from human Rb around the phosphorylation site of serine 780 (T-L-SP-P-I).
Specificity:	This antibody detects endogenous levels of Rb only when phosphorylated at Serine 780.
Formulation:	PBS (without Mg ²⁺ and Ca ²⁺), pH 7.4, 150 mM NaCl, 0.02% Sodium Azide and 50% Glycerol. State: Aff - Purified State: Liquid purified Ig fraction.
Concentration:	lot specific
Purification:	Affinity Chromatography using epitope-specific phosphopeptide. The antibody against non-phosphopeptide was removed by chromatography using non-phosphopeptide corresponding to the phosphorylation site.
Conjugation:	Unconjugated
Storage:	Store the antibody (in aliquots) at -20°C. Avoid repeated freezing and thawing.
Stability:	Shelf life: One year from despatch.
Gene Name:	RB transcriptional corepressor 1
Database Link:	Entrez Gene 5925 Human P06400
Synonyms:	Retinoblastoma 1, Rb, p105-Rb, pRb, pp110, OSRC



[View online »](#)

Product images:

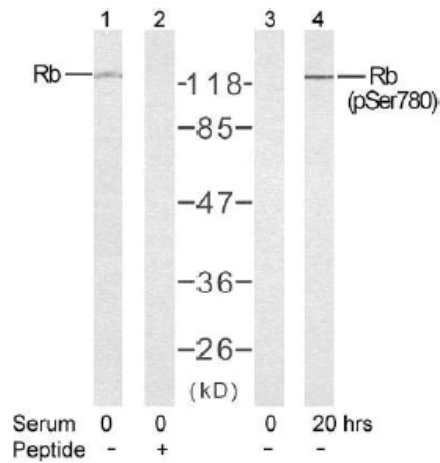
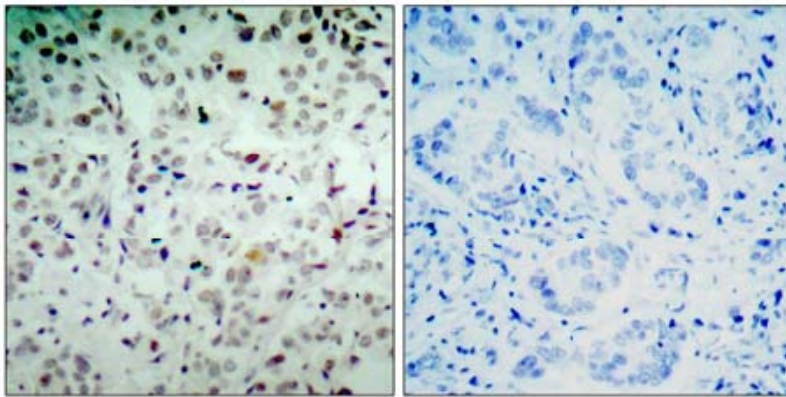


Figure 2. Western blot analysis of extract from K562 cells untreated or treated with 10% serum after 48 hours of starvation, using Rb antibody (Lane 1 and 2) and Rb (phospho-Ser780) antibody (#, Lane 3 and 4).



P-Peptide - +

Figure 1. Immunohistochemical analysis of paraffin- embedded human breast carcinoma tissue, using Rb (phospho-Ser780) antibody.

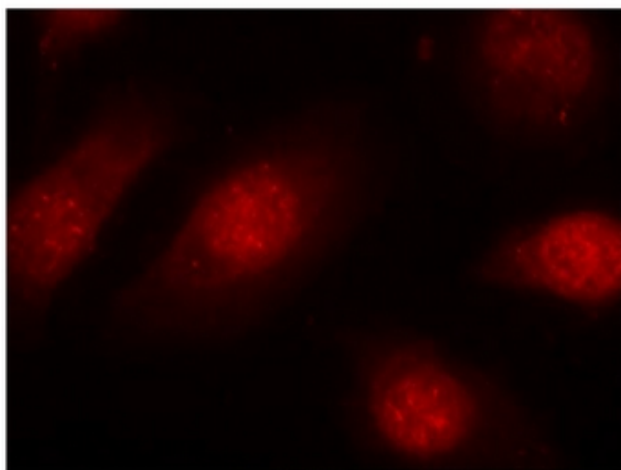


Figure 3. Immunofluorescence staining of methanol-fixed HeLa cells using Rb (phospho-Ser780) antibody (Red).