

Product datasheet for **AP02415PU-S**

LIM kinase 2 (LIMK2) pThr505 Rabbit Polyclonal Antibody

Product data:

| | |
|-----------------------|--|
| Product Type: | Primary Antibodies |
| Applications: | IF, IHC, WB |
| Recommended Dilution: | Western Blot: 1/500-1/1000. Immunofluorescence: 1/100-1/200. Immunohistochemistry on Paraffin Sections: 1/50-1/100. |
| Reactivity: | Human, Mouse, Rat |
| Host: | Rabbit |
| Clonality: | Polyclonal |
| Immunogen: | The antiserum was produced against synthesized phosphopeptide derived from human LIMK2 around the phosphorylation site of threonine 505 (R-Y-TP-V-V). |
| Specificity: | This antibody detects endogenous levels of LIMK2 only when phosphorylated at Threonine 505. |
| Formulation: | PBS (without Mg ²⁺ and Ca ²⁺), pH 7.4, 150 mM NaCl, 0.02% Sodium Azide and 50% Glycerol. State: Aff - Purified State: Liquid purified Ig fraction. |
| Concentration: | lot specific |
| Purification: | Affinity Chromatography using epitope-specific phosphopeptide. The antibody against non-phosphopeptide was removed by chromatography using non-phosphopeptide corresponding to the phosphorylation site. |
| Conjugation: | Unconjugated |
| Storage: | Store the antibody (in aliquots) at -20°C. Avoid repeated freezing and thawing. |
| Stability: | Shelf life: One year from despatch. |
| Gene Name: | LIM domain kinase 2 |
| Database Link: | Entrez Gene 3985 Human P53671 |



[View online »](#)

Background:

LIM kinases (LIM kinase 1 and LIM kinase 2) are serine/threonine kinases that have two zinc finger motifs, known as LIM motifs in their N terminal regulatory domain. LIM kinases are involved in actin cytoskeleton regulation through Rho family GTPases and downstream kinases PAKs and ROCK. PAK1 and ROCK phosphorylate LIM kinase 1 and LIM kinase 2, which increases the activity of the kinases. Activated LIM kinases inhibit the actin depolymerization activity of cofilin by phosphorylation at the N terminus of Cofilin.

Synonyms:

LIMK2, LIM domain kinase 2, LIMK-2, EC=2.7.11.1

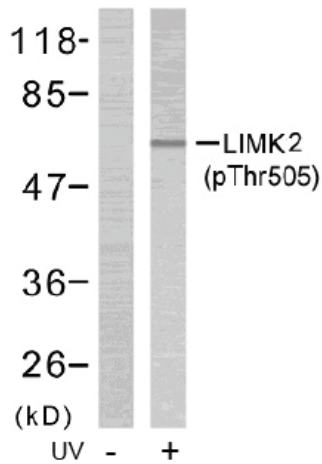
Product images:


Figure 2. Western blot analysis of extract from NIH/3T3 cells treated or untreated with UV (60 min), using LIMK2 (phospho-Thr505) antibody.

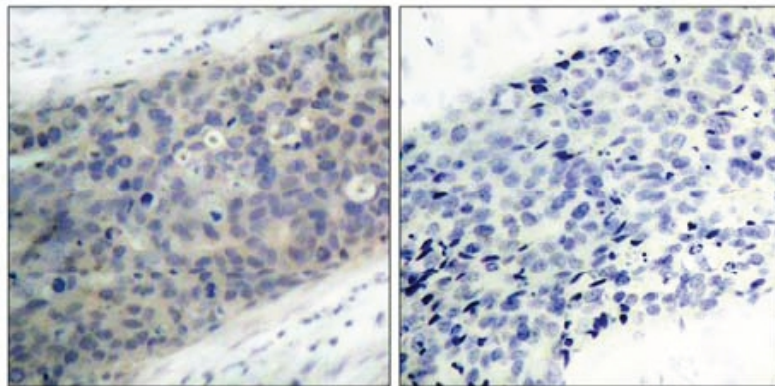


Figure 1. Immunohistochemical analysis of paraffin- embedded human breast carcinoma tissue using LIMK2 (phospho-Thr505) antibody.

P-Peptide - +

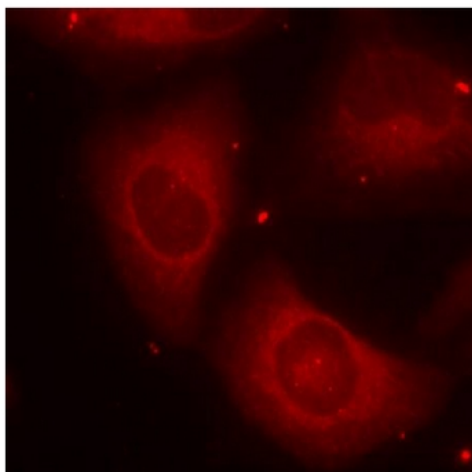


Figure 3. Immunofluorescence staining of methanol-fixed HeLa cells using LIMK2 (phospho-Thr505) antibody (Red).