

## Product datasheet for **AP02415PU-N**

### LIM kinase 2 (LIMK2) pThr505 Rabbit Polyclonal Antibody

#### Product data:

Product Type:	Primary Antibodies
Applications:	IF, IHC, WB
Recommended Dilution:	Western Blot: 1/500-1/1000. Immunofluorescence: 1/100-1/200. Immunohistochemistry on Paraffin Sections: 1/50-1/100.
Reactivity:	Human, Mouse, Rat
Host:	Rabbit
Clonality:	Polyclonal
Immunogen:	The antiserum was produced against synthesized phosphopeptide derived from human LIMK2 around the phosphorylation site of threonine 505 (R-Y-TP-V-V).
Specificity:	This antibody detects endogenous levels of LIMK2 only when phosphorylated at Threonine 505.
Formulation:	PBS (without Mg <sup>2+</sup> and Ca <sup>2+</sup> ), pH 7.4, 150 mM NaCl, 0.02% Sodium Azide and 50% Glycerol. State: Aff - Purified State: Liquid purified Ig fraction.
Concentration:	lot specific
Purification:	Affinity Chromatography using epitope-specific phosphopeptide. The antibody against non-phosphopeptide was removed by chromatography using non-phosphopeptide corresponding to the phosphorylation site.
Conjugation:	Unconjugated
Storage:	Store the antibody (in aliquots) at -20°C. Avoid repeated freezing and thawing.
Stability:	Shelf life: One year from despatch.
Gene Name:	LIM domain kinase 2
Database Link:	<a href="#">Entrez Gene 3985 Human P53671</a>



[View online »](#)

**Background:**

LIM kinases (LIM kinase 1 and LIM kinase 2) are serine/threonine kinases that have two zinc finger motifs, known as LIM motifs in their N terminal regulatory domain. LIM kinases are involved in actin cytoskeleton regulation through Rho family GTPases and downstream kinases PAKs and ROCK. PAK1 and ROCK phosphorylate LIM kinase 1 and LIM kinase 2, which increases the activity of the kinases. Activated LIM kinases inhibit the actin depolymerization activity of cofilin by phosphorylation at the N terminus of Cofilin.

**Synonyms:**

LIMK2, LIM domain kinase 2, LIMK-2, EC=2.7.11.1

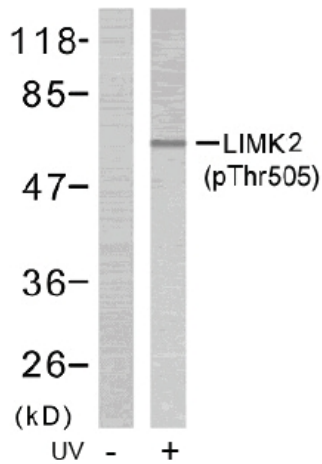
**Product images:**


Figure 2. Western blot analysis of extract from NIH/3T3 cells treated or untreated with UV (60 min), using LIMK2 (phospho-Thr505) antibody.

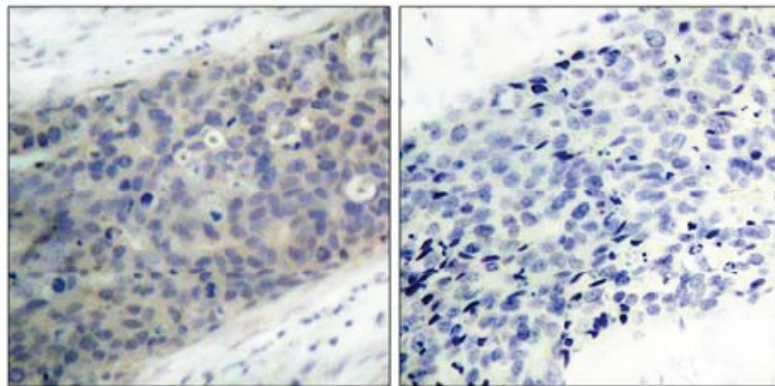


Figure 1. Immunohistochemical analysis of paraffin-embedded human breast carcinoma tissue using LIMK2 (phospho-Thr505) antibody.

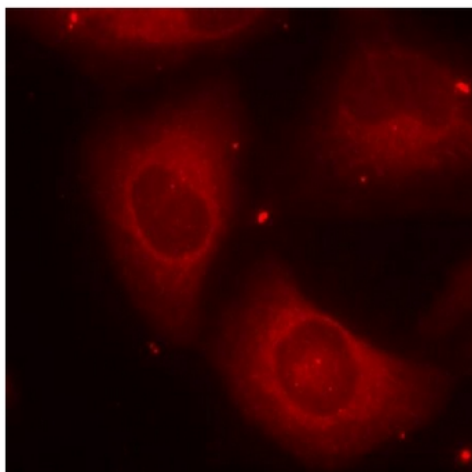


Figure 3. Immunofluorescence staining of methanol-fixed HeLa cells using LIMK2 (phospho-Thr505) antibody (Red).