

Product datasheet for **AP02414PU-S**

LIM Kinase 1 (LIMK1) pThr508 Rabbit Polyclonal Antibody

Product data:

Product Type:	Primary Antibodies
Applications:	IF, IHC, WB
Recommended Dilution:	Western Blot: 1/500-1/1000. Immunofluorescence: 1/100-1/200. Immunohistochemistry on Paraffin Sections: 1/50-1/100.
Reactivity:	Human, Mouse, Rat
Host:	Rabbit
Clonality:	Polyclonal
Immunogen:	The antiserum was produced against synthesized phosphopeptide derived from human LIMK1 around the phosphorylation site of threonine 508 (R-Y-TP-V-V).
Specificity:	This antibody detects endogenous levels of LIMK1 only when phosphorylated at Threonine 508.
Formulation:	PBS (without Mg ²⁺ and Ca ²⁺), pH 7.4, 150 mM NaCl, 0.02% Sodium Azide and 50% Glycerol. State: Aff - Purified State: Liquid purified Ig fraction.
Concentration:	lot specific
Purification:	Affinity Chromatography using epitope-specific phosphopeptide. The antibody against non-phosphopeptide was removed by chromatography using non-phosphopeptide corresponding to the phosphorylation site.
Conjugation:	Unconjugated
Storage:	Store the antibody (in aliquots) at -20°C. Avoid repeated freezing and thawing.
Stability:	Shelf life: One year from despatch.
Gene Name:	LIM domain kinase 1
Database Link:	Entrez Gene 3984 Human P53667



[View online »](#)

Background:

LIMK1 is a protein kinase which regulates actin filament dynamics. Phosphorylates and inactivates the actin binding/depolymerizing factor cofilin, thereby stabilizing the actin cytoskeleton. LIMK1 may be involved in brain development; it is highly expressed in both adult and fetal nervous system. Detected ubiquitously throughout the different regions of adult brain, with highest levels in the cerebral cortex. Expressed to a lesser extent in heart and skeletal muscle.

Synonyms:

LIMK, LIM domain kinase 1, LIMK-1, EC=2.7.11.1

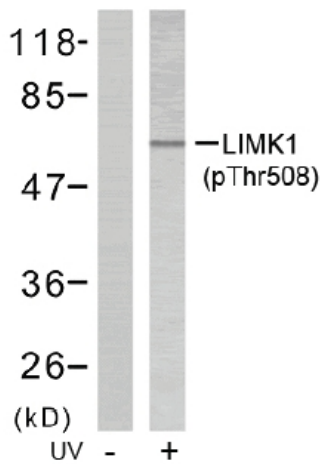
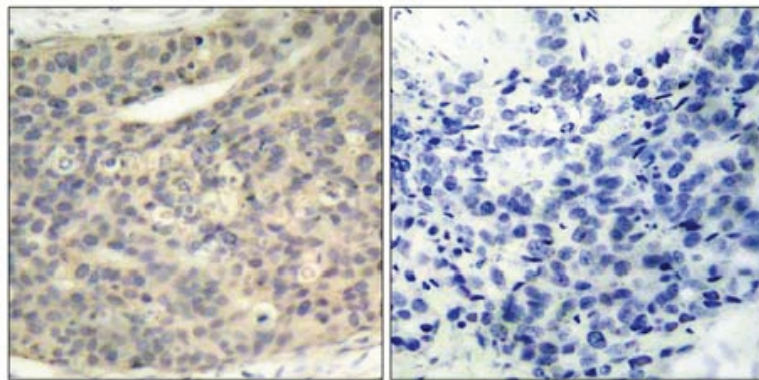
Product images:


Figure 2. Western blot analysis of extract from NIH/3T3 cells treated or untreated with UV (60min), using LIMK1 (phospho-Thr508) antibody.



P-Peptide - +

Figure 1. Immunohistochemical analysis of paraffin- embedded human breast carcinoma tissue, using LIMK1 (phospho-Thr508) antibody.

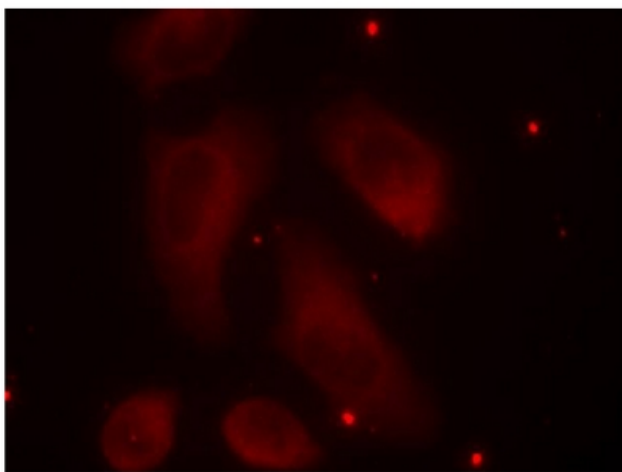


Figure 3. Immunofluorescence staining of methanol-fixed HeLa cells using LIMK1 (phospho-Thr508) antibody (Red).