

## Product datasheet for **AP02408PU-N**

### CDC25C pSer216 Rabbit Polyclonal Antibody

#### Product data:

Product Type:	Primary Antibodies
Applications:	IF, IHC, WB
Recommended Dilution:	<b>Immunohistochemistry on paraffin sections:</b> 1/50 - 1/100. <b>Western Blot:</b> 1/500 - 1/1000; Incubate membrane with diluted antibody in 5% nonfat milk, 1X TBS, 0,1% Tween-20 at 4°C with gentle shaking, overnight. <b>Immunofluorescence:</b> 1/100 - 1/200.
Reactivity:	Human
Host:	Rabbit
Clonality:	Polyclonal
Immunogen:	Synthetic phosphopeptide derived from human cdc25C around the phosphorylation site of Serine 216 (S-P-Sp-M-P).
Specificity:	This antibody detects endogenous levels of CDC25C only when phosphorylated at Serine 216.
Formulation:	PBS (without Mg <sup>2+</sup> and Ca <sup>2+</sup> ), pH 7.4, 150 mM NaCl, 0.02% Sodium Azide and 50% Glycerol State: Aff - Purified State: Liquid purified Ig fraction
Concentration:	lot specific
Purification:	Immunoaffinity Chromatography
Conjugation:	Unconjugated
Storage:	Store the antibody (in aliquots) at -20°C. Avoid repeated freezing and thawing.
Stability:	Shelf life: One year from despatch.
Gene Name:	cell division cycle 25C
Database Link:	<a href="#">Entrez Gene 995 Human P30307</a>



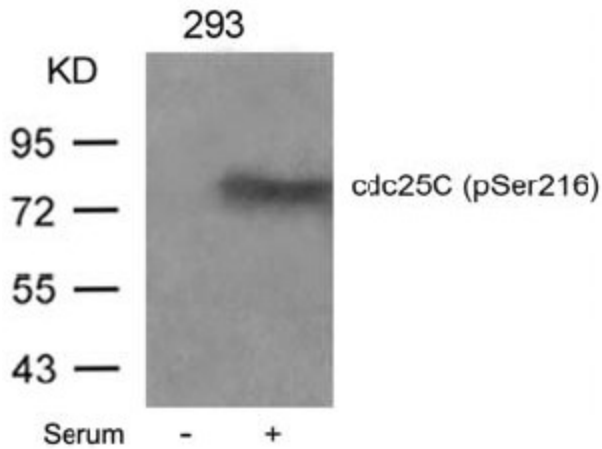
[View online »](#)

**Background:**

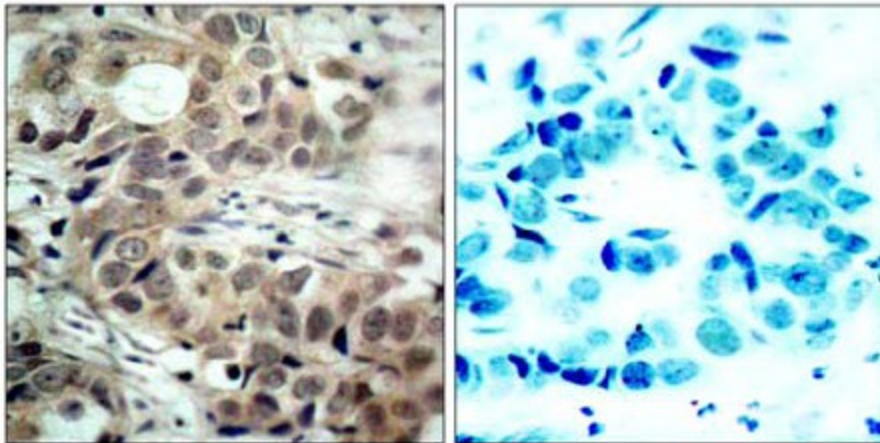
Cdc25C is a tyrosine phosphatase and belongs to the Cdc25 phosphatase family. It has been highly conserved during evolution and it plays a key role in the regulation of cell division. It directs dephosphorylation of cyclin B-bound CDC2 and triggers entry into mitosis. It is also thought to suppress p53-induced growth arrest. Cdc25C is mainly expressed in G2 phase. Multiple alternatively spliced transcript variants of this gene have been described, however, the full-length nature of many of them is not known.

**Synonyms:**

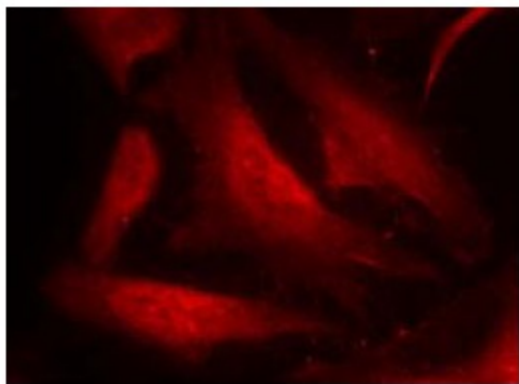
CDC25

**Product images:**


Western Blot analysis of extracts from 293 cells untreated or treated with serum using cdc25c (pSer216) antibody



Immunohistochemical staining of paraffin-embedded human breast carcinoma tissue using cdc25c (pSer216) antibody (left) or the same antibody preincubated with blocking peptide (right)



Immunofluorescence staining of methanol-fixed HeLa cells using cdc25c (pSer216) antibody