

## Product datasheet for **AP02406PU-N**

### beta Catenin (CTNNB1) pThr41/pSer45 Rabbit Polyclonal Antibody

#### Product data:

Product Type:	Primary Antibodies
Applications:	WB
Recommended Dilution:	Suitable for use in Western blot (1:500~1:1000).
Reactivity:	Human, Mouse, Rat
Host:	Rabbit
Clonality:	Polyclonal
Immunogen:	The antiserum was produced against synthesized phosphopeptide derived from human $\beta$ -Catenin around the phosphorylation site of threonine 41/serine 45 (A-T-TP-T-A-P-SP-L-S).
Specificity:	The antibody was affinity-purified from rabbit antiserum by affinity-chromatography using epitope-specific phosphopeptide. The antibody against non-phosphopeptide was removed by chromatography using non-phosphopeptide corresponding to the phosphorylation site. $\beta$ -Catenin (phospho-Thr41/Ser45) antibody detects endogenous levels of $\beta$ -Catenin only when phosphorylated at threonine 41/serine 45.
Formulation:	PBS (without Mg <sup>2+</sup> and Ca <sup>2+</sup> ), pH 7.4, 150 mM NaCl, 0.02% Sodium Azide and 50% Glycerol. State: Aff - Purified State: Liquid purified Ig fraction.
Concentration:	lot specific
Purification:	Immunoaffinity chromatography.
Conjugation:	Unconjugated
Storage:	Store the antibody (in aliquots) at -20°C. Avoid repeated freezing and thawing.
Stability:	Shelf life: One year from despatch.
Gene Name:	catenin beta 1
Database Link:	<a href="#">Entrez Gene 1499 Human P35222</a>
Synonyms:	CTNNB1, CTNNB, Beta-catenin



[View online »](#)

Product images:

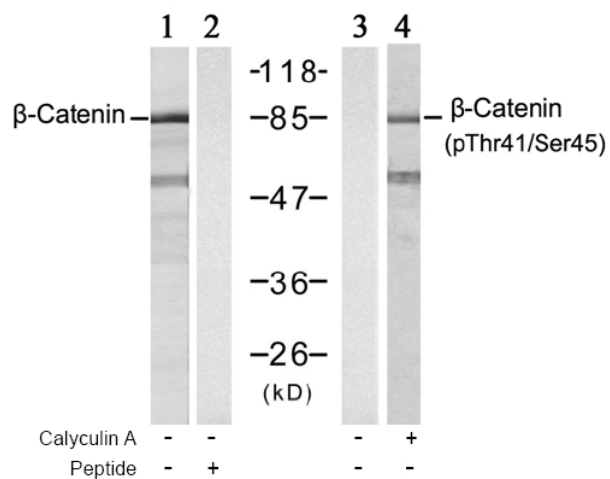


Figure 1. Western blot analysis of extract from SW626 cell using  $\beta$ -Catenin antibody (Lane 1 and 2) and  $\beta$ -Catenin (phospho-Thr41/Ser45) antibody (Lane 3 and 4).