

## Product datasheet for **AP02397PU-S**

### **RSK1 p90 (RPS6KA1) pThr348 Rabbit Polyclonal Antibody**

#### **Product data:**

<b>Product Type:</b>	Primary Antibodies
<b>Applications:</b>	IF, IHC, WB
<b>Recommended Dilution:</b>	Western Blot: 1/500-1/1000. Immunofluorescence: 1/100-1/200. Immunohistochemistry on Paraffin Sections: 1/50-1/100.
<b>Reactivity:</b>	Human, Mouse, Rat
<b>Host:</b>	Rabbit
<b>Clonality:</b>	Polyclonal
<b>Immunogen:</b>	The antiserum was produced against synthesized phosphopeptide derived from mouse p90RSK around the phosphorylation site of threonine 348 (S-R-TP-P-R).
<b>Specificity:</b>	This antibody detects endogenous levels of p90RSK only when phosphorylated at Threonine 348.
<b>Formulation:</b>	PBS (without Mg <sup>2+</sup> and Ca <sup>2+</sup> ), pH 7.4, 150 mM NaCl, 0.02% Sodium Azide and 50% Glycerol. State: Aff - Purified State: Liquid purified Ig fraction.
<b>Concentration:</b>	lot specific
<b>Purification:</b>	Affinity Chromatography using epitope-specific phosphopeptide. The antibody against non-phosphopeptide was removed by chromatography using non-phosphopeptide corresponding to the phosphorylation site.
<b>Conjugation:</b>	Unconjugated
<b>Storage:</b>	Store the antibody (in aliquots) at -20°C. Avoid repeated freezing and thawing.
<b>Stability:</b>	Shelf life: One year from despatch.
<b>Gene Name:</b>	ribosomal protein S6 kinase A1
<b>Database Link:</b>	<a href="#">Entrez Gene 6195 Human Q15418</a>
<b>Synonyms:</b>	Ribosomal S6 kinase 1, 90 kDa ribosomal protein S6 kinase 1, MAPKAPK1A, RSK1, RSK-1, p90RSK1



[View online »](#)

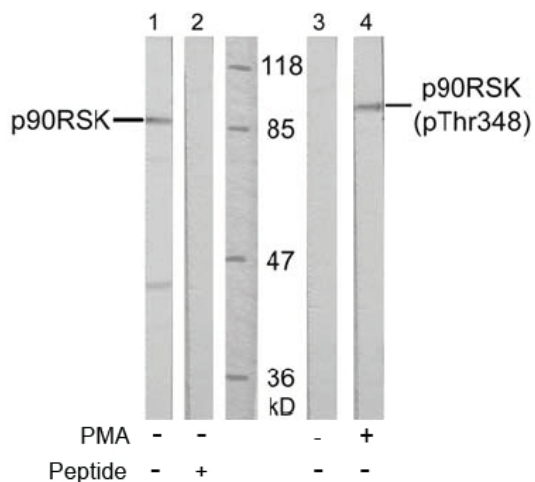
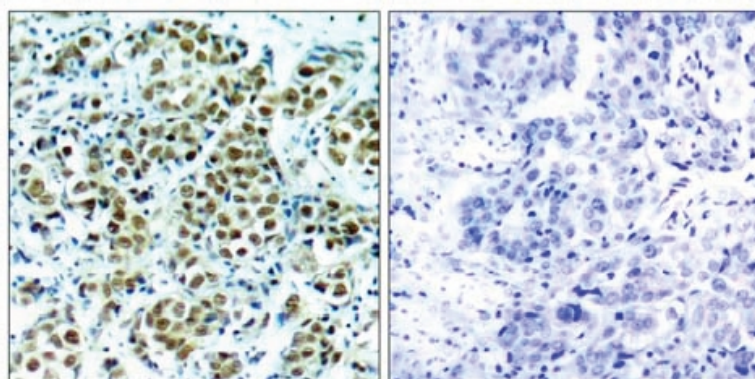
**Product images:**


Figure 2. Western blot analysis of extract from HeLa cells, untreated or treated with PMA (200 nM, 30 min), using p90RSK antibody (Lane 1 and 2) and p90RSK (phospho-Thr348) antibody (Lane 3 and 4).



P-Peptide                      -                      +

Figure 1. Immunohistochemical analysis of paraffin-embedded human breast carcinoma tissue, using p90RSK (phospho-Thr348) antibody.

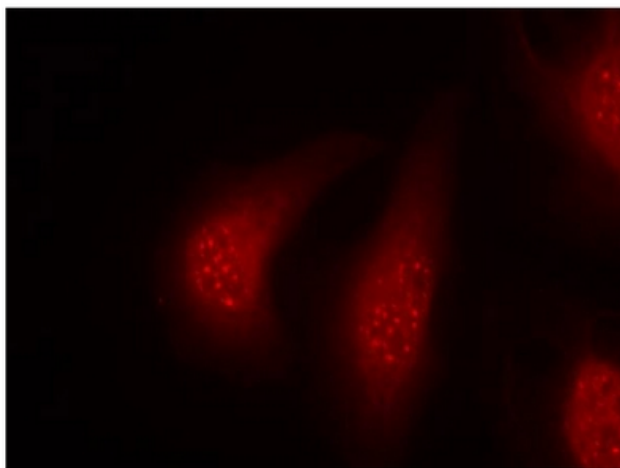


Figure 3. Immunofluorescence staining of methanol-fixed HeLa cells using p90RSK pThr348 antibody (Red).