

## Product datasheet for **AP02397PU-N**

### **RSK1 p90 (RPS6KA1) pThr348 Rabbit Polyclonal Antibody**

#### **Product data:**

|                              |  |
|------------------------------|--|
| <b>Product Type:</b>         | Primary Antibodies   |
| <b>Applications:</b>         | IF, IHC, WB  |
| <b>Recommended Dilution:</b> | Western Blot: 1/500-1/1000.<br>Immunofluorescence: 1/100-1/200.<br>Immunohistochemistry on Paraffin Sections: 1/50-1/100.  |
| <b>Reactivity:</b>           | Human, Mouse, Rat  |
| <b>Host:</b>                 | Rabbit   |
| <b>Clonality:</b>            | Polyclonal   |
| <b>Immunogen:</b>            | The antiserum was produced against synthesized phosphopeptide derived from mouse p90RSK around the phosphorylation site of threonine 348 (S-R-TP-P-R).   |
| <b>Specificity:</b>          | This antibody detects endogenous levels of p90RSK only when phosphorylated at Threonine 348.   |
| <b>Formulation:</b>          | PBS (without Mg <sup>2+</sup> and Ca <sup>2+</sup> ), pH 7.4, 150 mM NaCl, 0.02% Sodium Azide and 50% Glycerol.<br>State: Aff - Purified<br>State: Liquid purified Ig fraction.                          |
| <b>Concentration:</b>        | lot specific   |
| <b>Purification:</b>         | Affinity Chromatography using epitope-specific phosphopeptide. The antibody against non-phosphopeptide was removed by chromatography using non-phosphopeptide corresponding to the phosphorylation site. |
| <b>Conjugation:</b>          | Unconjugated   |
| <b>Storage:</b>              | Store the antibody (in aliquots) at -20°C.<br>Avoid repeated freezing and thawing.   |
| <b>Stability:</b>            | Shelf life: One year from despatch.  |
| <b>Gene Name:</b>            | ribosomal protein S6 kinase A1   |
| <b>Database Link:</b>        | <a href="#">Entrez Gene 6195 Human Q15418</a>  |
| <b>Synonyms:</b>             | Ribosomal S6 kinase 1, 90 kDa ribosomal protein S6 kinase 1, MAPKAPK1A, RSK1, RSK-1, p90RSK1   |



[View online »](#)

Product images:

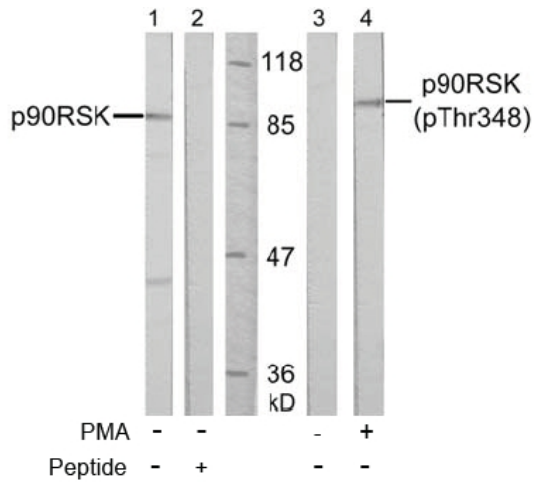
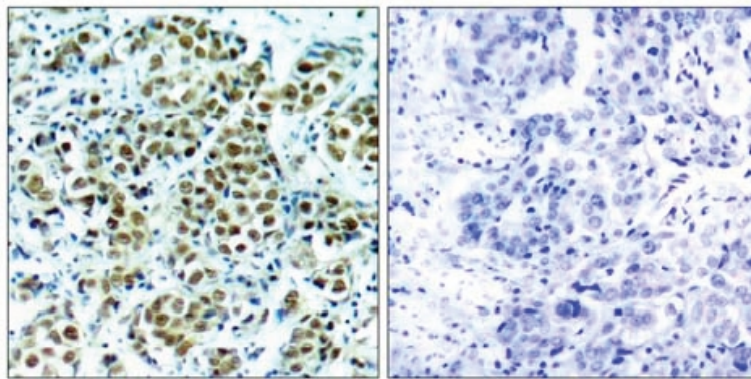


Figure 2. Western blot analysis of extract from HeLa cells, untreated or treated with PMA (200 nM, 30 min), using p90RSK antibody (Lane 1 and 2) and p90RSK (phospho-Thr348) antibody (Lane 3 and 4).



P-Peptide - +

Figure 1. Immunohistochemical analysis of paraffin-embedded human breast carcinoma tissue, using p90RSK (phospho-Thr348) antibody.

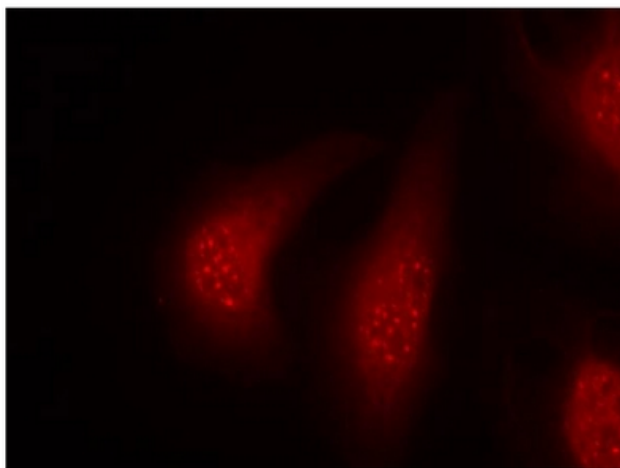


Figure 3. Immunofluorescence staining of methanol-fixed HeLa cells using p90RSK pThr348 antibody (Red).