

Product datasheet for **AP02395PU-S**

Phospholipase C gamma 1 (PLCG1) pTyr783 Rabbit Polyclonal Antibody

Product data:

Product Type:	Primary Antibodies
Applications:	WB
Recommended Dilution:	Western blot: 1/500-1/1000. Incubate membrane with diluted antibody in 5% nonfat milk, 1xTBS, 0.1% Tween-20 at 4°C with gentle shaking, overnight.
Reactivity:	Human, Mouse
Host:	Rabbit
Clonality:	Polyclonal
Immunogen:	Peptide sequence around phosphorylation site of Tyrosine 783 (G-F- Y -V-E) derived from Human PLC-gamma-1 .
Specificity:	This antibody detects endogenous levels of PLC-gamma 1 only when phosphorylated at Tyrosine 783.
Formulation:	PBS (without Mg ²⁺ and Ca ²⁺), pH 7.4, 150 mM NaCl, 0.02% Sodium Azide and 50% Glycerol State: Aff - Purified State: Liquid purified IgG fraction
Concentration:	lot specific
Purification:	Affinity Chromatography using using epitope-specific phosphopeptide. The antibody against non-phosphopeptide was removed by chromatography using non-phosphopeptide corresponding to the phosphorylation site
Conjugation:	Unconjugated
Storage:	Store the antibody (in aliquots) at -20°C. Avoid repeated freezing and thawing.
Stability:	Shelf life: One year from despatch.
Gene Name:	phospholipase C gamma 1
Database Link:	Entrez Gene 5335 Human P19174



[View online »](#)

Background: Phospholipase C gamma (PLCG) binds to receptor tyrosine kinases, e.g. EGFR, PDGFR, leading to phosphorylation of PLC-gamma at Tyrosine 771, 783 and 1245. Phosphorylation of Tyrosine 783 leads to enzymatic activation of PLC-gamma. PLC-gamma hydrolyzes phosphatidylinositol-4,5-bisphosphate (PIP2), thus generating the second messengers inositol-1,4,5-triphosphate (IP3) and diacylglycerol (DAG).

Synonyms: PLC1, Phospholipase C-gamma-1, PLC-gamma-1, PLC gamma1 Phospholipase C-II, PLC-II, PLC-148

Note: Molecular Weight: 155 kDa

Product images:

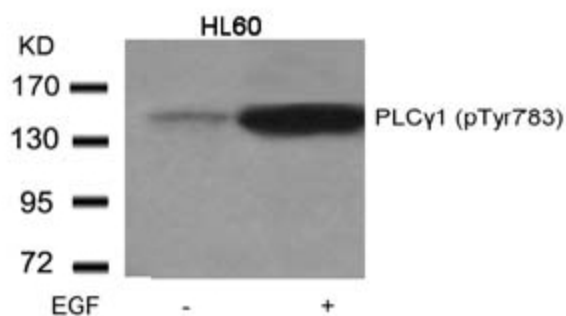


Figure 1. Western blot analysis of extract from HL60 cells, untreated or treated with EGF using PLCG1 antibody (Phospho-Tyr783).