

Product datasheet for **AP02393PU-S**

p53 (TP53) pSer315 Rabbit Polyclonal Antibody

Product data:

| | |
|-----------------------|--|
| Product Type: | Primary Antibodies |
| Applications: | IF, IHC, WB |
| Recommended Dilution: | Western Blot: 1/500-1/1000. Immunofluorescence: 1/100-1/200. Immunohistochemistry on Paraffin Sections: 1/50~1/100. |
| Reactivity: | Human |
| Host: | Rabbit |
| Clonality: | Polyclonal |
| Immunogen: | The antiserum was produced against synthesized phosphopeptide derived from human p53 around the phosphorylation site of Serine 315 (S-S-SP-P-Q). |
| Specificity: | This antibody detects endogenous levels of p53 only when phosphorylated at Serine 315. |
| Formulation: | PBS (without Mg ²⁺ and Ca ²⁺), pH 7.4, 150 mM NaCl, 0.02% Sodium Azide and 50% Glycerol. State: Aff - Purified State: Liquid purified Ig fraction. |
| Concentration: | lot specific |
| Purification: | Affinity Chromatography using epitope-specific phosphopeptide. The antibody against non-phosphopeptide was removed by chromatography using non-phosphopeptide corresponding to the phosphorylation site. |
| Conjugation: | Unconjugated |
| Storage: | Store the antibody (in aliquots) at -20°C. Avoid repeated freezing and thawing. |
| Stability: | Shelf life: One year from despatch. |
| Gene Name: | tumor protein p53 |
| Database Link: | Entrez Gene 7157 Human P04637 |
| Synonyms: | Cellular tumor antigen p53, Tumor suppressor p53, Phosphoprotein p53, NY-CO-13 |



[View online »](#)

Product images:

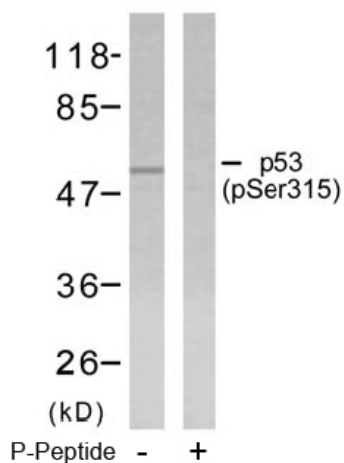


Figure 2. Western blot analysis of extracts from ovary cancer cells using p53 pSer315 antibody.

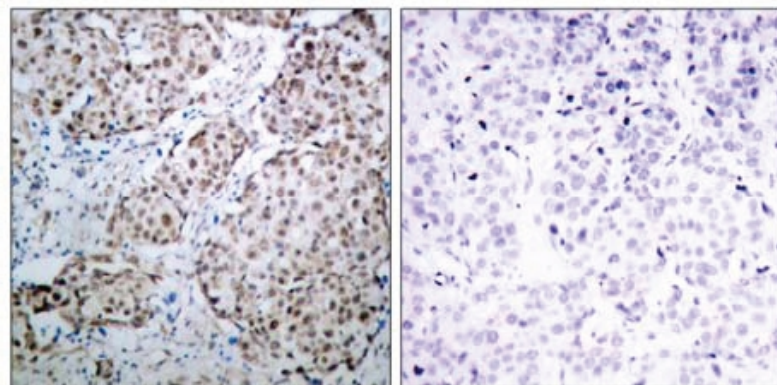


Figure 1. Immunohistochemical analysis of paraffin-embedded human breast carcinoma tissue using p53 pSer315 antibody.

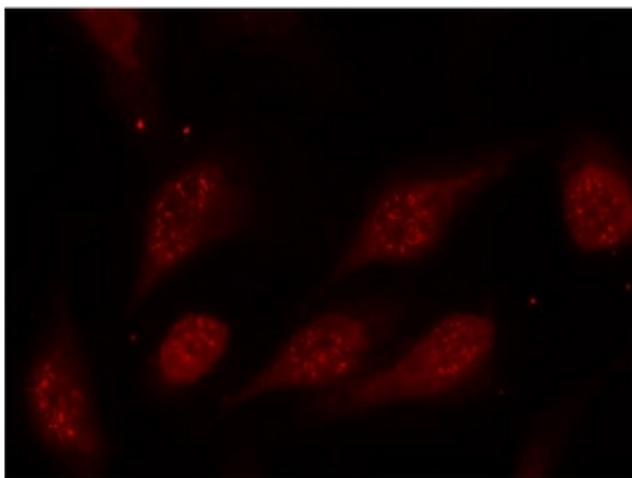


Figure 3. Immunofluorescence staining of methanol-fixed HeLa cells using p53 pSer315 antibody (Red).