

## Product datasheet for **AP02393PU-N**

### p53 (TP53) pSer315 Rabbit Polyclonal Antibody

#### Product data:

Product Type:	Primary Antibodies
Applications:	IF, IHC, WB
Recommended Dilution:	Western Blot: 1/500-1/1000. Immunofluorescence: 1/100-1/200. Immunohistochemistry on Paraffin Sections: 1/50~1/100.
Reactivity:	Human
Host:	Rabbit
Clonality:	Polyclonal
Immunogen:	The antiserum was produced against synthesized phosphopeptide derived from human p53 around the phosphorylation site of Serine 315 (S-S-SP-P-Q).
Specificity:	This antibody detects endogenous levels of p53 only when phosphorylated at Serine 315.
Formulation:	PBS (without Mg <sup>2+</sup> and Ca <sup>2+</sup> ), pH 7.4, 150 mM NaCl, 0.02% Sodium Azide and 50% Glycerol. State: Aff - Purified State: Liquid purified Ig fraction.
Concentration:	lot specific
Purification:	Affinity Chromatography using epitope-specific phosphopeptide. The antibody against non-phosphopeptide was removed by chromatography using non-phosphopeptide corresponding to the phosphorylation site.
Conjugation:	Unconjugated
Storage:	Store the antibody (in aliquots) at -20°C. Avoid repeated freezing and thawing.
Stability:	Shelf life: One year from despatch.
Gene Name:	tumor protein p53
Database Link:	<a href="#">Entrez Gene 7157 Human P04637</a>
Synonyms:	Cellular tumor antigen p53, Tumor suppressor p53, Phosphoprotein p53, NY-CO-13



[View online »](#)

Product images:

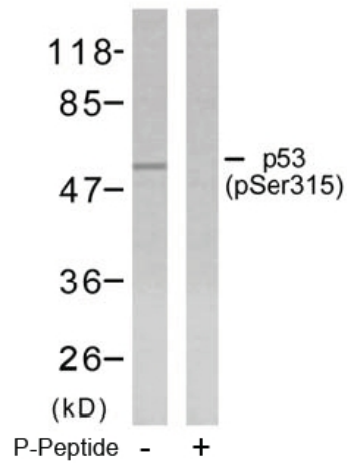


Figure 2. Western blot analysis of extracts from ovary cancer cells using p53 pSer315 antibody.

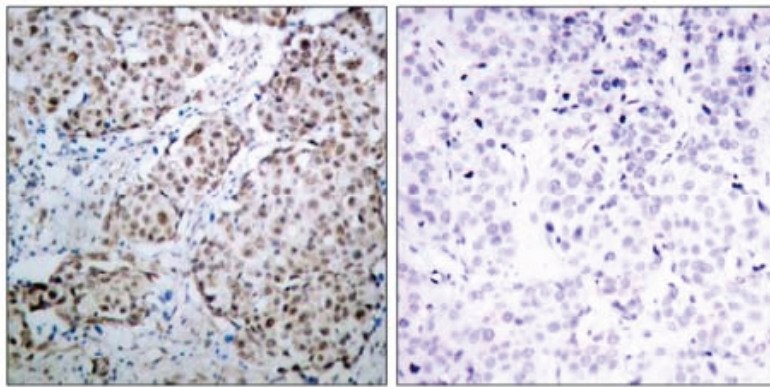


Figure 1. Immunohistochemical analysis of paraffin-embedded human breast carcinoma tissue using p53 pSer315 antibody.

P-Peptide - +

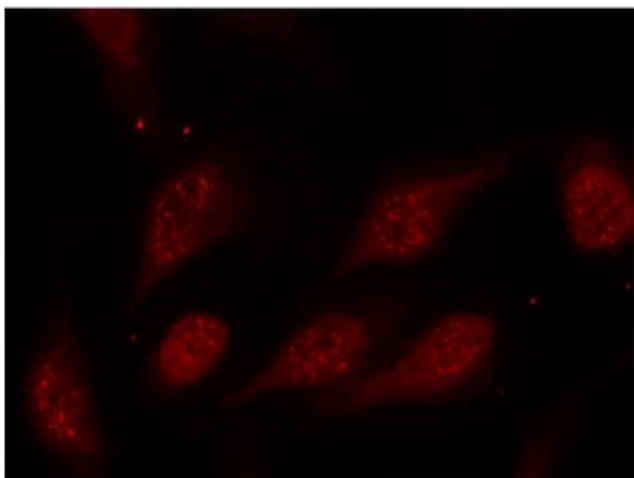


Figure 3. Immunofluorescence staining of methanol-fixed HeLa cells using p53 pSer315 antibody (Red).