

## Product datasheet for **AP02387PU-S**

### Paxillin (PXN) pTyr118 Rabbit Polyclonal Antibody

#### Product data:

Product Type:	Primary Antibodies
Applications:	IHC, WB
Recommended Dilution:	Suitable for use in Western blot (1:500~1:1000) and Immunohistochemistry (1:50~1:100).
Reactivity:	Human, Mouse
Host:	Rabbit
Clonality:	Polyclonal
Immunogen:	The antiserum was produced against synthesized phosphopeptide derived from human Paxillin around the phosphorylation site of tyrosine 118 (H-V-YP-S-F).
Specificity:	The antibody was affinity-purified from rabbit antiserum by affinity-chromatography using epitope-specific phosphopeptide. The antibody against non-phosphopeptide was removed by chromatography using non-phosphopeptide corresponding to the phosphorylation site. Paxillin antibody (Phospho-Tyr118) detects endogenous levels of Paxillin only when phosphorylated at tyrosine 118.
Formulation:	PBS (without Mg <sup>2+</sup> and Ca <sup>2+</sup> ), pH 7.4, 150 mM NaCl, 0.02% Sodium Azide and 50% Glycerol. State: Aff - Purified State: Liquid purified Ig fraction.
Concentration:	lot specific
Purification:	Immunoaffinity chromatography.
Conjugation:	Unconjugated
Storage:	Store the antibody (in aliquots) at -20°C. Avoid repeated freezing and thawing.
Stability:	Shelf life: One year from despatch.
Gene Name:	paxillin
Database Link:	<a href="#">Entrez Gene 5829 Human P49023</a>



[View online »](#)

**Background:**

Paxillin is a 64 kDa cytoskeletal adapter protein involved in organisation and function of focal adhesions, which are critical to cell adhesion and migration. This in turn plays a role in a wide variety of processes including embryogenesis, organogenesis, wound repair, inflammation and cancer. Paxillin contains LD motifs, LIM domains, SH3 and SH2 binding domains that serve as docking sites for cytoskeletal proteins, tyrosine kinases (e.g., FAK, Pyk 2, Src), serine/threonine kinases, GTPase activating proteins and other adaptor proteins (e.g., Actin, Vinculin, Crk).

**Synonyms:**

FLJ16691

**Product images:**

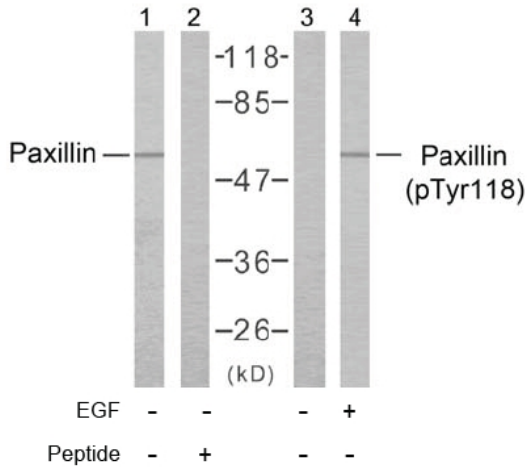
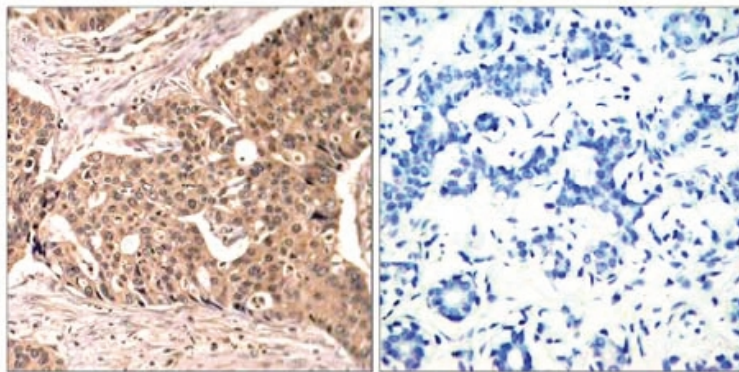


Figure 2. Western blot analysis of the extracts from HeLa cells using Paxillin antibody (Lane 1 and 2) and Paxillin (phospho-Tyr118) antibody (Lane 3 and 4).



P-Peptide - +

Figure 1. Immunohistochemical analysis of paraffin-embedded human breast carcinoma tissue using Paxillin (phospho-Tyr118) antibody.