

## Product datasheet for **AP02382PU-S**

### VEGF Receptor 2 (KDR) pTyr1175 Rabbit Polyclonal Antibody

#### Product data:

Product Type:	Primary Antibodies
Applications:	IF, IHC
Recommended Dilution:	<b>Immunofluorescence:</b> 1/100-1/200. <b>Immunohistochemistry on Paraffin Sections:</b> 1/50-1/100.
Reactivity:	Human, Mouse, Rat
Host:	Rabbit
Clonality:	Polyclonal
Immunogen:	Synthetic phosphopeptide derived from Human VEGFR2 around the phosphorylation site of Tyrosine 1175 (K-D-Yp-I-V).
Specificity:	This antibody detects endogenous levels of VEGFR2 only when phosphorylated at Tyrosine 1175.
Formulation:	PBS (without Mg <sup>2+</sup> and Ca <sup>2+</sup> ), pH 7.4, 150 mM NaCl, 0.02% Sodium Azide and 50% Glycerol State: Aff - Purified State: Liquid purified Ig fraction
Concentration:	lot specific
Purification:	Affinity Chromatography using epitope-specific phosphopeptide. Non-phospho specific antibodies were removed by Chromatography using non-phosphopeptide
Conjugation:	Unconjugated
Storage:	Upon receipt, store undiluted (in aliquots) at -20°C. Avoid repeated freezing and thawing.
Stability:	Shelf life: one year from despatch.
Predicted Protein Size:	230 kDa
Gene Name:	kinase insert domain receptor
Database Link:	<a href="#">Entrez Gene 3791 Human P35968</a>



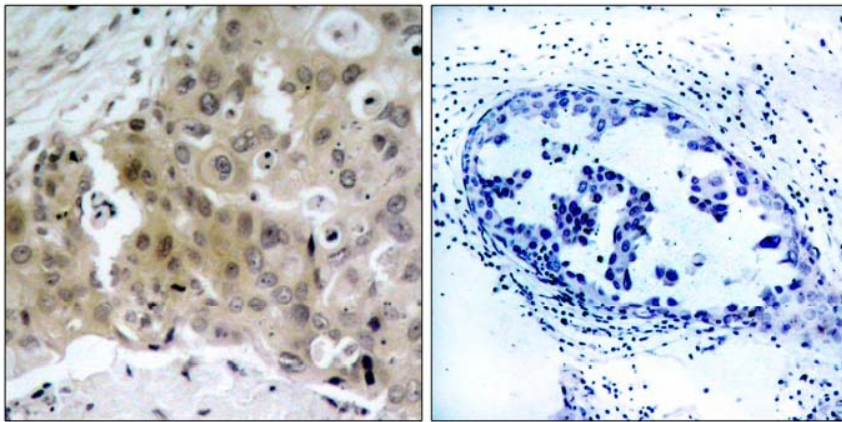
[View online »](#)

**Background:**

VEGF receptor 2 is a member of a receptor tyrosine kinase family whose activation plays an essential role in a large number of biological processes such as embryonic development, wound healing, cell proliferation, migration and differentiation. Like other growth factor receptors, upon ligand binding VEGF receptor 2 dimerises and is autophosphorylated on multiple tyrosine residues. These sites can be involved in the regulation of kinase activity or serve as binding sites for SH2 and phosphotyrosine binding containing signalling proteins. Phosphorylation of Tyrosines 1054 and 1059 in the activation loop is required for activation of VEGF receptor 2 and its intrinsic tyrosine kinase activity. In case of HIV-1 infection, the interaction with extracellular viral Tat protein seems to enhance angiogenesis in Kaposi's sarcoma lesions.

**Synonyms:**

VEGFR2, FLK1, KDR, VEGF Receptor 2

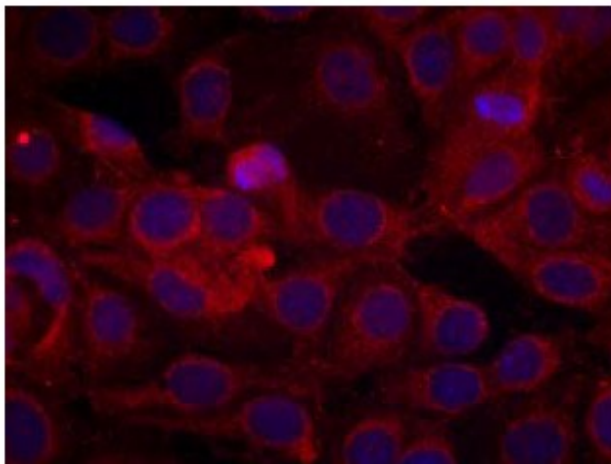
**Product images:**

P-Peptide

-

+

Immunohistochemical analysis of paraffin-embedded human breast carcinoma tissue, using VEGFR2 (phospho-Tyr1175) antibody.



Immunofluorescence staining of methanol-fixed MCF cells using VEGFR2 (pTyr1175) antibody.